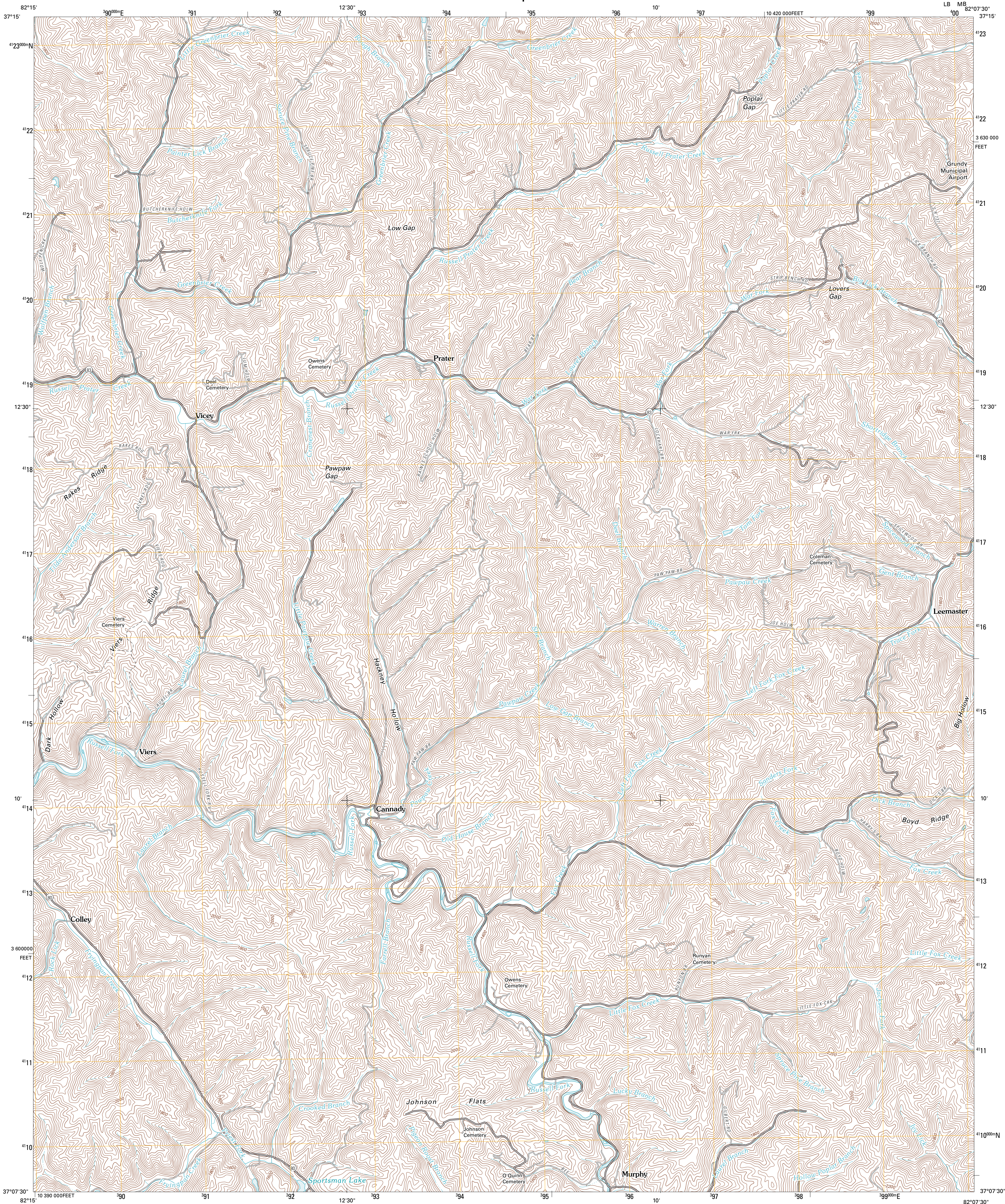




U.S. DEPARTMENT OF THE INTERIOR
U. S. GEOLOGICAL SURVEY

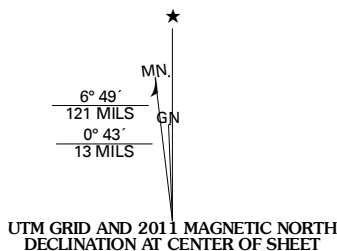


PRATER QUADRANGLE
VIRGINIA
7.5-MINUTE SERIES

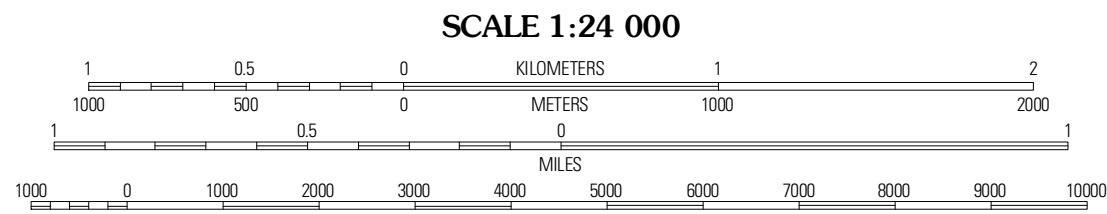


Produced by the United States Geological Survey
North American Datum of 1983 (NAD83)
World Geodetic System of 1984 (WGS84). Projection and
1 000-meter grid: Universal Transverse Mercator, Zone 17S
10 000-foot ticks: Virginia Coordinate System of 1983 (south
zone)

Imagery.....NAIP, October 2009
Roads.....©2006-2010 Tele Atlas
Names.....GNIS, 2010
Hydrography.....National Hydrography Dataset, 2009
Contours.....National Elevation Dataset, 2001



U.S. National Grid
100,000-m Square ID
10
17S
Grid Zone Designation



CONTOUR INTERVAL 40 FEET
NORTH AMERICAN VERTICAL DATUM OF 1988
This map was produced to conform with version 0.5.10 of the
draft USGS Standards for 7.5-Minute Quadrangle Maps.
A metadata file associated with this product is draft version 0.5.11



QUADRANGLE LOCATION		
Elkhorn City	Harman	Grundy
Haysi	Prater	Vansant
Nora	Duty	Big A Mountain

ROAD CLASSIFICATION	
Interstate Route	State Route
US Route	Local Road
Ramp	4WD
Interstate Route	US Route
	State Route

PRATER, VA
2011