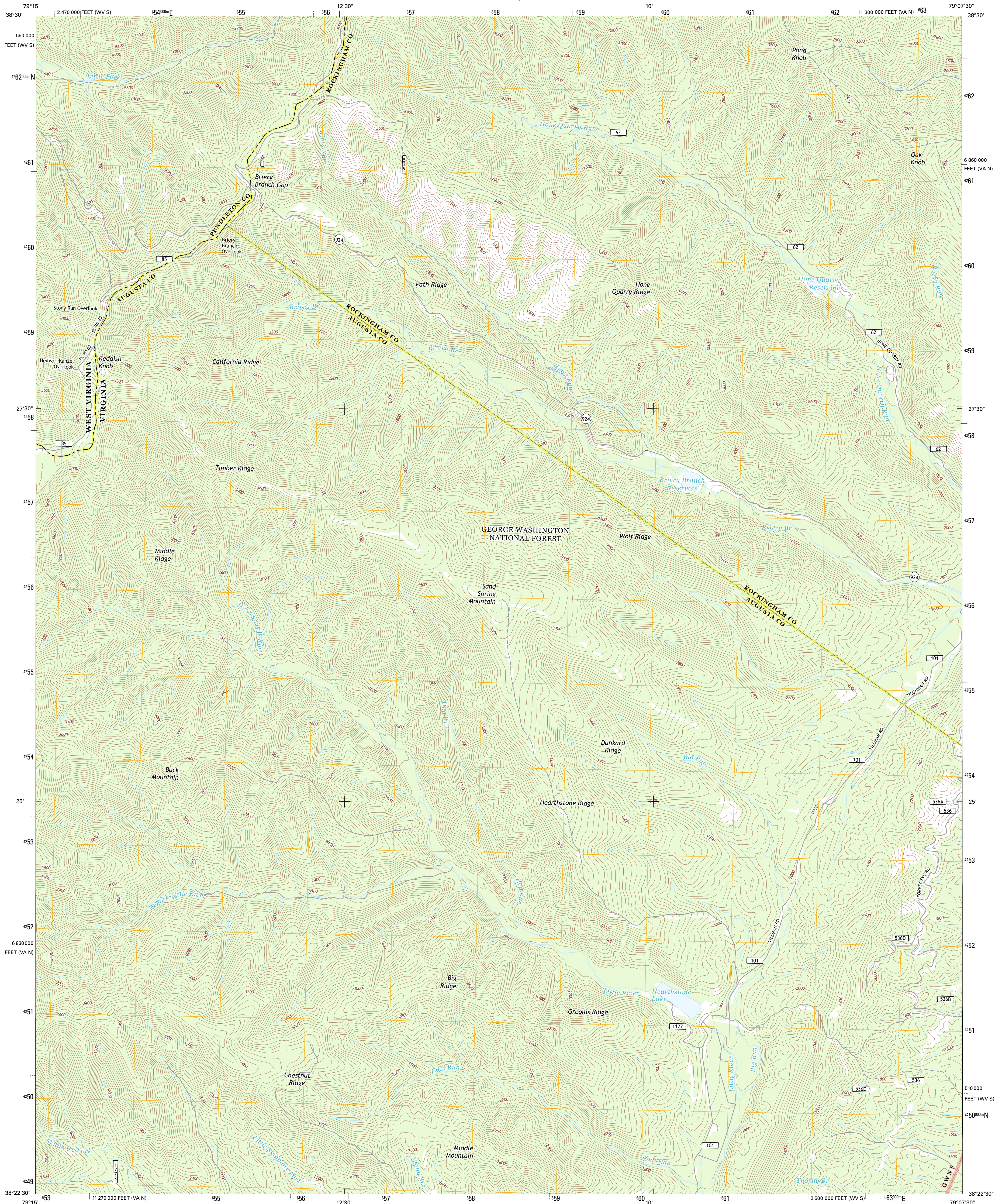




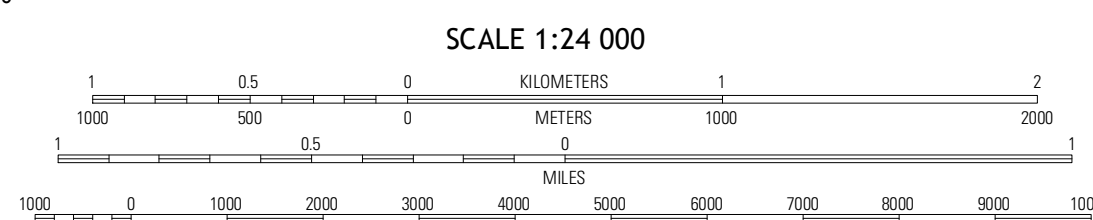
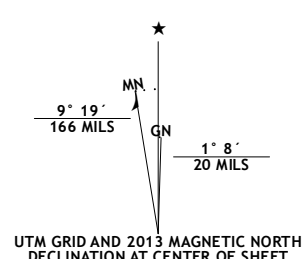
U.S. DEPARTMENT OF THE INTERIOR
U. S. GEOLOGICAL SURVEY



REDDISH KNOB QUADRANGLE
VIRGINIA-WEST VIRGINIA
7.5-MINUTE SERIES



Produced by the United States Geological Survey
North American Datum of 1983 (NAD83)
World Geodetic System of 1984 (WGS84). Projection and
1 000-meter grid: Universal Transverse Mercator, Zone 17S
10 000-foot ticks: Virginia Coordinate System of 1983 (north
zone), West Virginia Coordinate System of 1983 (south zone)



QUADRANGLE LOCATION		
Sugar Grove	Branlywine	Ravley Springs
Palo Alto	Reddish Knob	Briery Branch
West Augusta	Stokesville	Parnassus

ROAD CLASSIFICATION			
Expressway	Local Connector	US Route	State Route
Secondary Hwy	Local Road	FS Passenger Route	FS High Clearance Route
Ramp	4WD		
Interstate Route			
FS Primary Route			

Check with local Forest Service unit for current travel conditions and restrictions.

REDDISH KNOB, VA-WV
2013

Imagery: NAIIP, May 2012
Roads: TomTom, ©2006-2012
Roads within US Forest Service Lands: FSTape Data with limited Forest Service updates, 2013
Names: GNS, 2013
Hydrography: National Hydrography Dataset, 2012
Contours: National Elevation Dataset, 2006
Boundaries: Census, IBWC, IBC, USGS, 1972 - 2012

This map was produced to conform with the National Geospatial Program US Topo Product Standard, 2011. A metadata file associated with this product is draft version 0.6.11

ADJOINING 7.5 QUADRANGLES