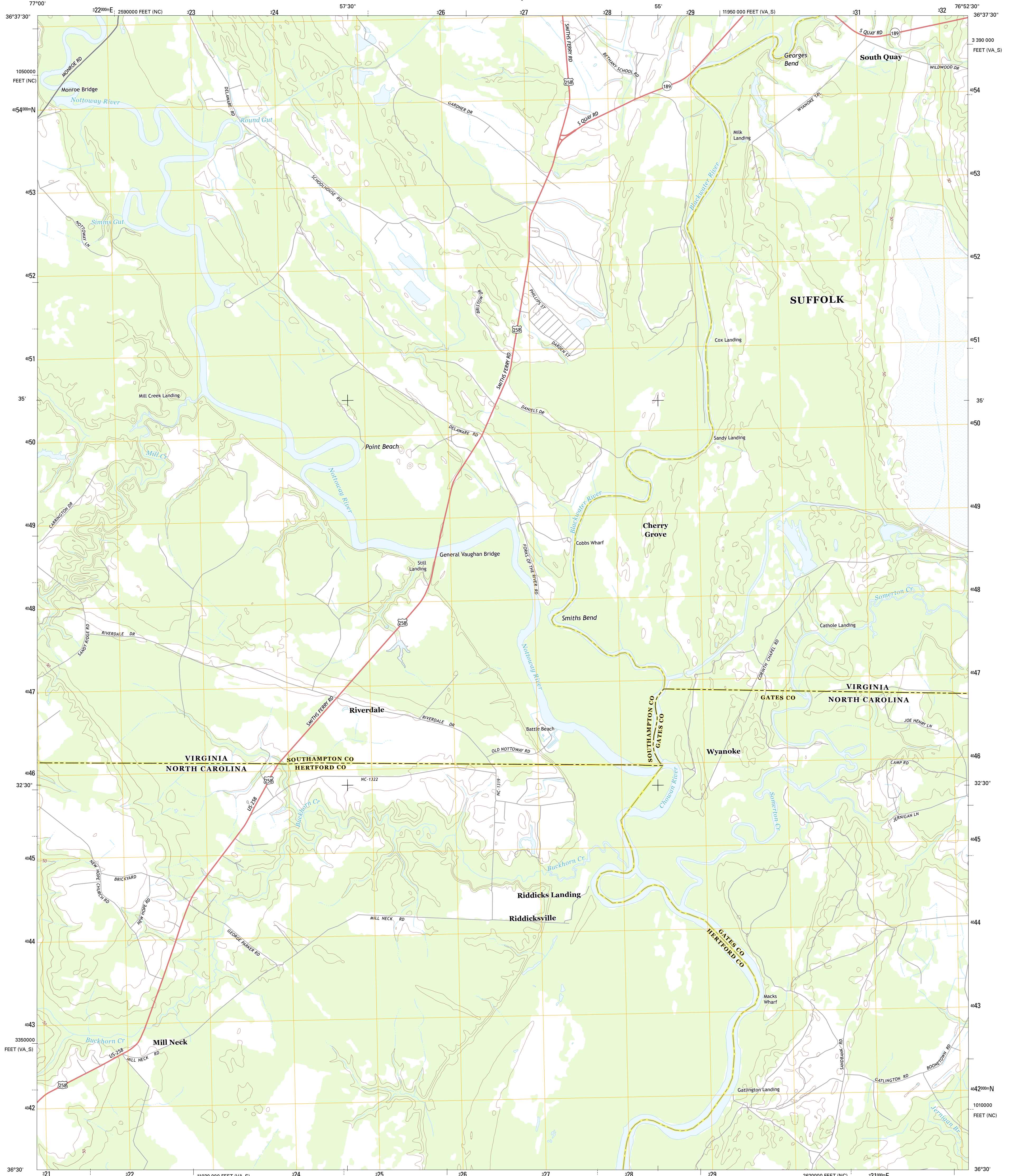




U.S. DEPARTMENT OF THE INTERIOR
U. S. GEOLOGICAL SURVEY

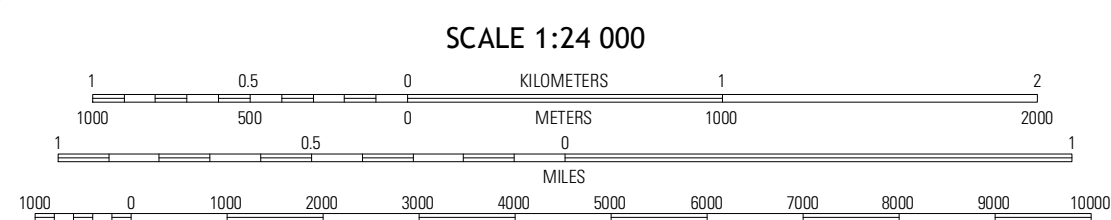
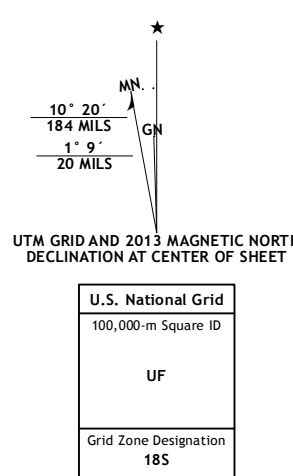


RIVERDALE QUADRANGLE
VIRGINIA-NORTH CAROLINA
7.5-MINUTE SERIES



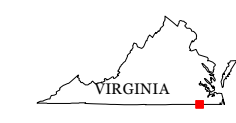
Produced by the United States Geological Survey
North American Datum of 1983 (NAD83)
World Geodetic System of 1984 (WGS84) Projection and
1 000-meter grid; Universal Transverse Mercator, Zone 18S
10 000-foot ticks; Virginia Coordinate System of 1983 (south
zone), North Carolina Coordinate System of 1983

Imagery.....NAIP, May 2012 - June 2012
Roads.....©2006-2012 TomTom
Names.....©2011-2012 GNIS, 2013
Hydrography.....National Hydrography Dataset, 2012
Contours.....National Elevation Dataset, 2010
Boundaries.....Census, IBWC, USGS, 1972 - 2012



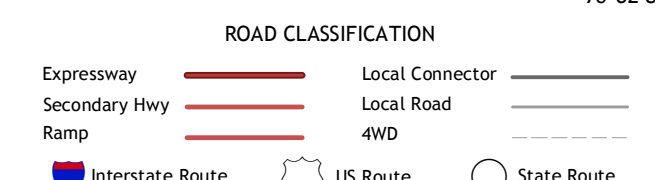
CONTOUR INTERVAL 10 FEET
NORTH AMERICAN VERTICAL DATUM OF 1988

This map was produced to conform with the
National Geospatial Program US Topo Product Standard, 2011.
A metadata file associated with this product is draft version 0.6.11



QUADRANGLE LOCATION

Courtland	Franklin	Holland
Sunbeam	Riverdale	Gates
Marblehead	Winton	Gatesville



RIVERDALE, VA-NC
2013

ADJOINING 7.5 QUADRANGLES