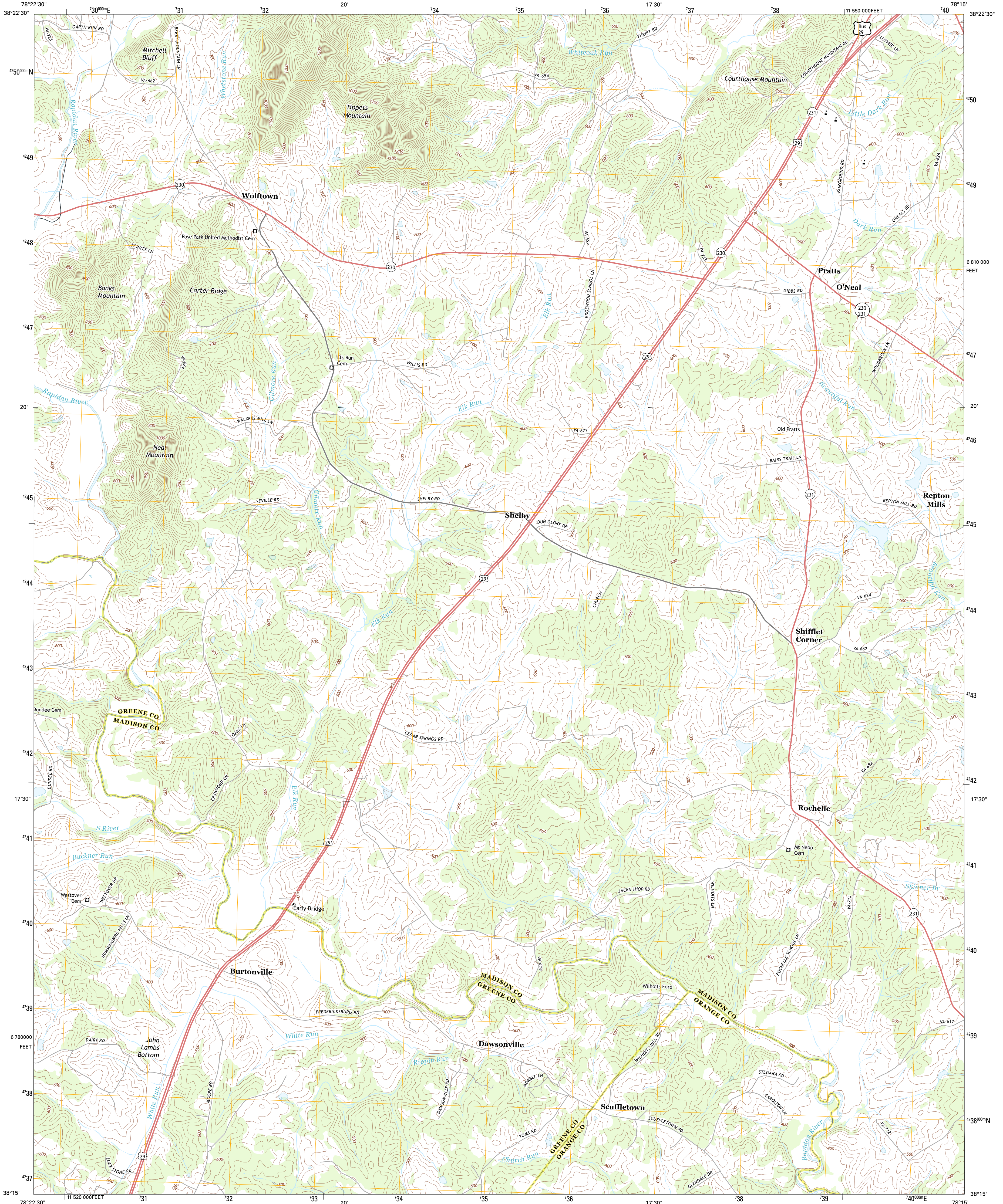




U.S. DEPARTMENT OF THE INTERIOR  
U. S. GEOLOGICAL SURVEY

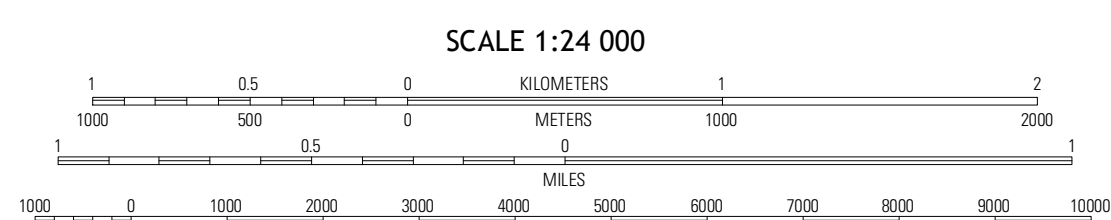
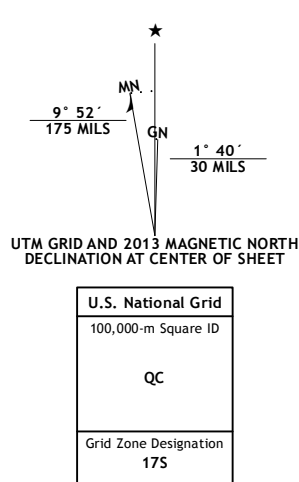


ROCHELLE QUADRANGLE  
VIRGINIA  
7.5-MINUTE SERIES



Produced by the United States Geological Survey  
North American Datum of 1983 (NAD83)  
World Geodetic System of 1984 (WGS84), Projection and  
1 000-meter grid; Universal Transverse Mercator, Zone 17S  
10 000-foot ticks; Virginia Coordinate System of 1983 (north  
zone)

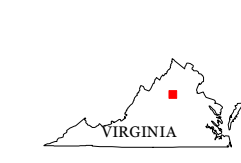
Imagery.....NAIP, May 2012  
Roads.....©2006-2012 TomTom  
Names.....©2006-2012 TomTom  
Hydrography.....©2013  
Contours.....National Hydrography Dataset, 2012  
Boundaries.....National Elevation Dataset, 2000  
Boundaries.....Census, IBWC, IBC, USGS, 1972 - 2012



SCALE 1:24 000

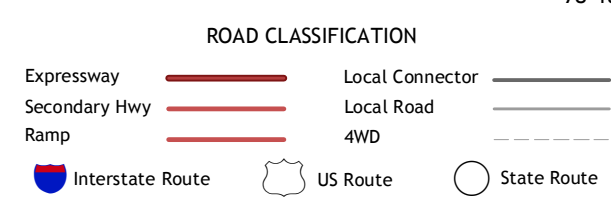
CONTOUR INTERVAL 20 FEET  
NORTH AMERICAN VERTICAL DATUM OF 1988

This map was produced to conform with the  
National Geospatial Program US Topo Product Standard, 2011.  
A metadata file associated with this product is draft version 0.6.11



QUADRANGLE LOCATION

Fletcher	Madison	Brightwood
Saunderville	Rochelle	Madison Mills
Earlyville	Burtonville	Dawsonville



ROCHELLE, VA  
2013

ADJOINING 7.5 QUADRANGLES