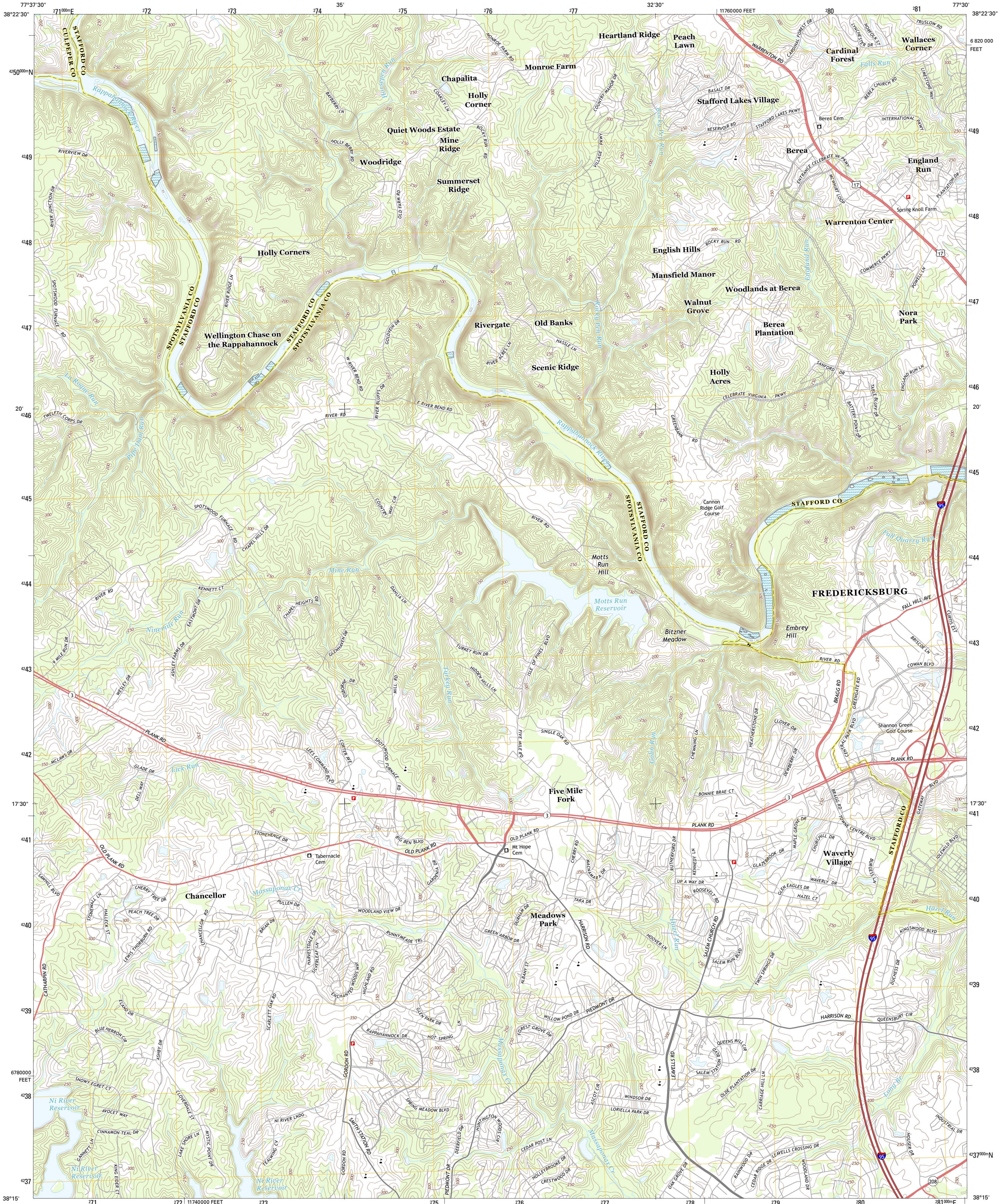




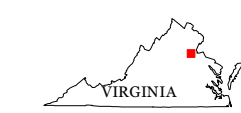
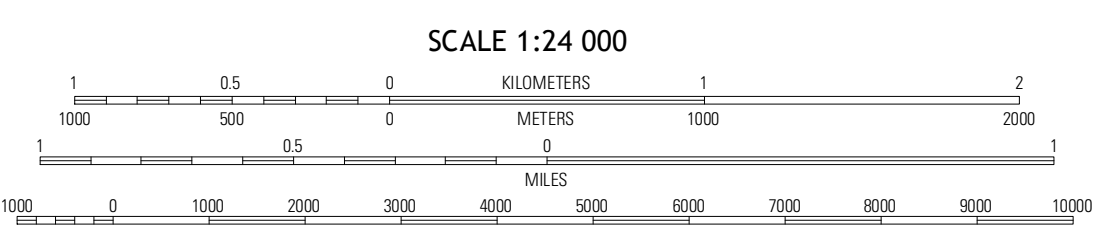
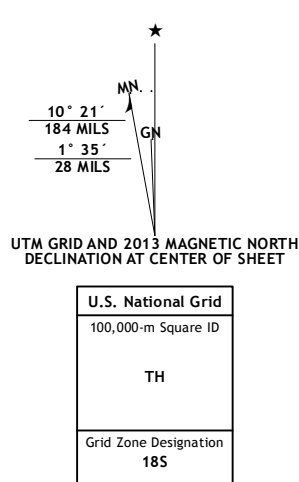
U.S. DEPARTMENT OF THE INTERIOR  
U. S. GEOLOGICAL SURVEY



SALEM CHURCH QUADRANGLE  
VIRGINIA  
7.5-MINUTE SERIES

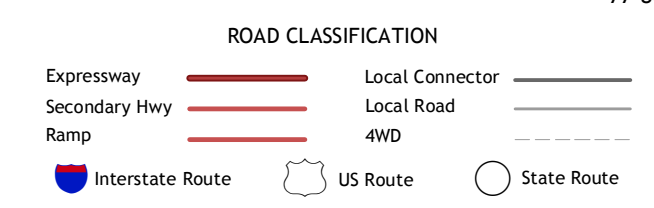


Produced by the United States Geological Survey  
North American Datum of 1983 (NAD83)  
World Geodetic System of 1984 (WGS84) Projection and  
1 000-meter grid: Universal Transverse Mercator, Zone 18S  
10 000-foot ticks: Virginia Coordinate System of 1983 (north zone)



QUADRANGLE LOCATION

Richardsville	Stork	Stafford
Chancellor	Salem Church	Fredericksburg
Brokensburg	Spotsylvania	Guinea



Imagery.....NAIP, May 2012  
Roads.....©2006-2012, TomTom  
Names.....©2013, GNS  
Hydrography.....National Hydrography Dataset, 2012  
Contours.....National Elevation Dataset, 2000  
Boundaries.....Census, IBWC, IBC, USGS, 1972 - 2012

CONTOUR INTERVAL 10 FEET  
NORTH AMERICAN VERTICAL DATUM OF 1988  
This map was produced to conform with the  
National Geospatial Program US Topo Product Standard, 2011.  
A metadata file associated with this product is draft version 0.6.11

SALEM CHURCH, VA  
2013

ADJOINING 7.5 QUADRANGLES