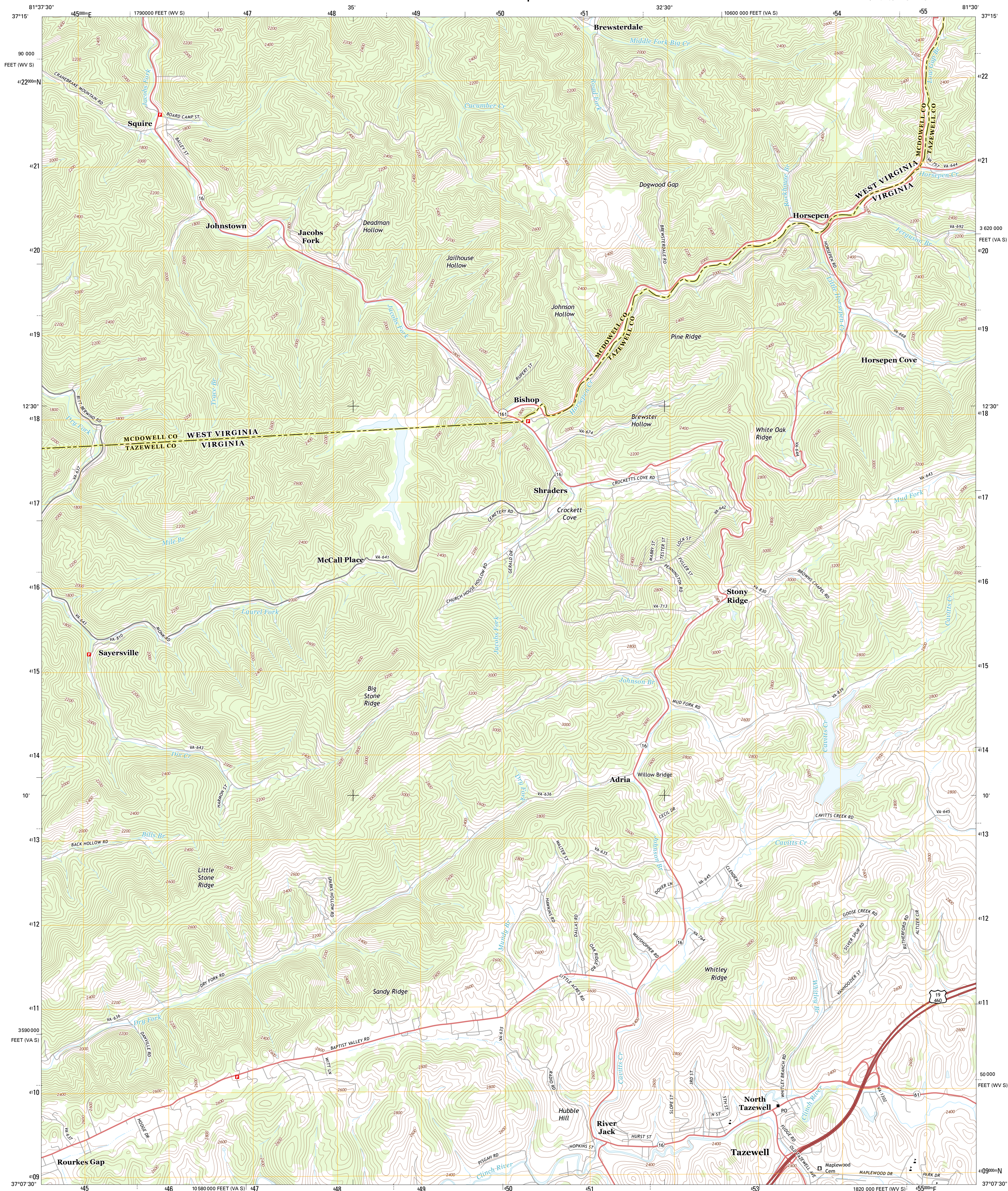




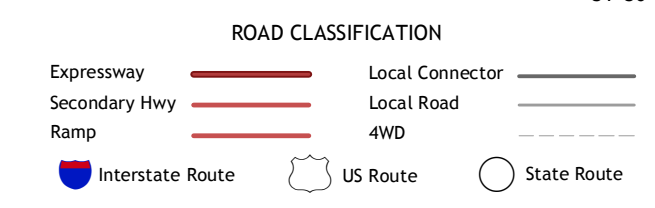
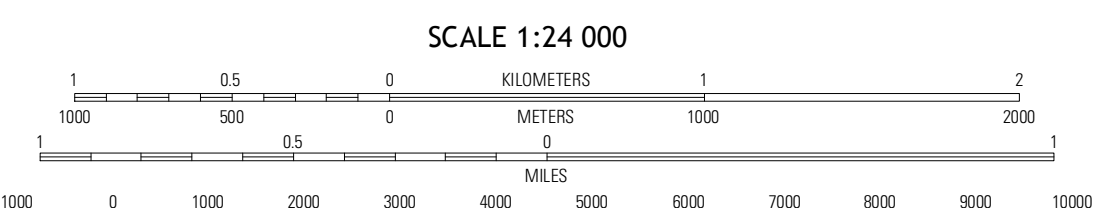
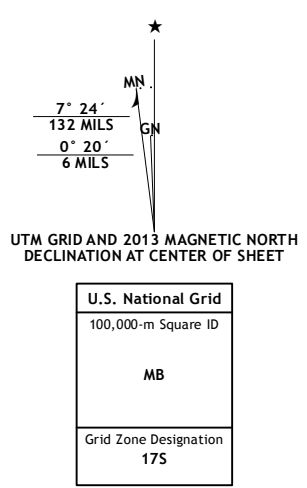
U.S. DEPARTMENT OF THE INTERIOR
U. S. GEOLOGICAL SURVEY



TAZEWELL NORTH QUADRANGLE
VIRGINIA-WEST VIRGINIA
7.5-MINUTE SERIES



Produced by the United States Geological Survey
North American Datum of 1983 (NAD83)
World Geodetic System of 1984 (WGS84). Projection and
10 000-foot ticks: Virginia Coordinate System of 1983 (south
zone), West Virginia Coordinate System of 1983 (south zone)



Imagery.....NAIP, June 2012
Roads.....©2006-2012 TomTom
Names.....GNS, 2013
Hydrography.....National Hydrography Dataset, 2012
Contours.....National Elevation Dataset, 2005
Boundaries.....Census, IBWC, IBC, USGS, 1972 - 2012

CONTOUR INTERVAL 40 FEET
NORTH AMERICAN VERTICAL DATUM OF 1988

This map was produced to conform with the
National Geospatial Program US Topo Product Standard, 2011.
A metadata file associated with this product is draft version 0.6.11

War	Gary	Anawak
Amnatah	Tazewell North	Tipop
Pounding Mill	Tazewell South	Hutchinson Rock

TAZEWELL NORTH, VA-WV
2013

ADJOINING 7.5' QUADRANGLES