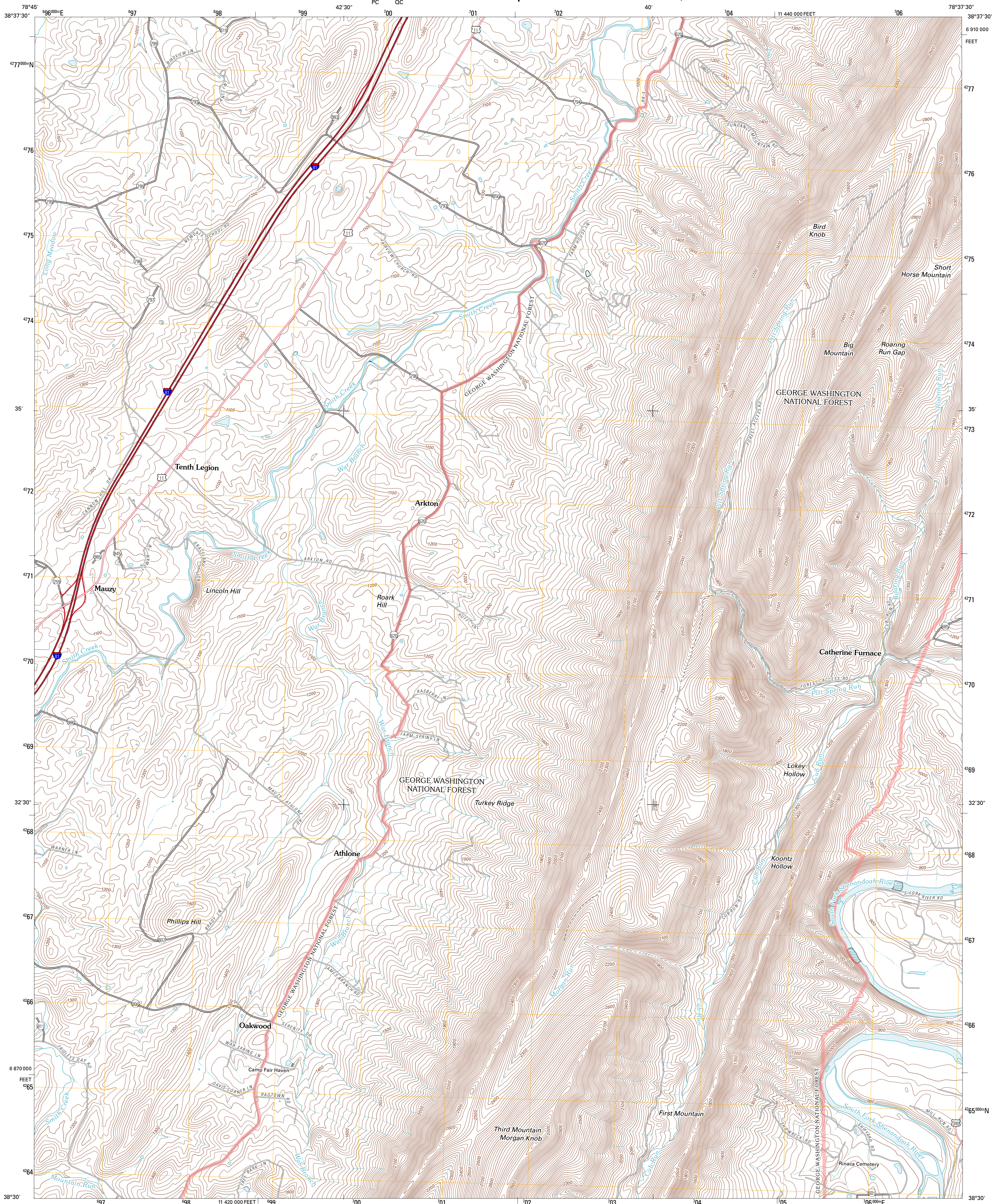




U.S. DEPARTMENT OF THE INTERIOR  
U. S. GEOLOGICAL SURVEY

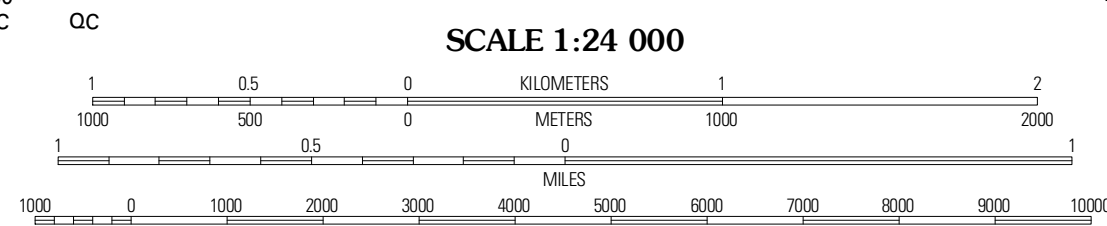
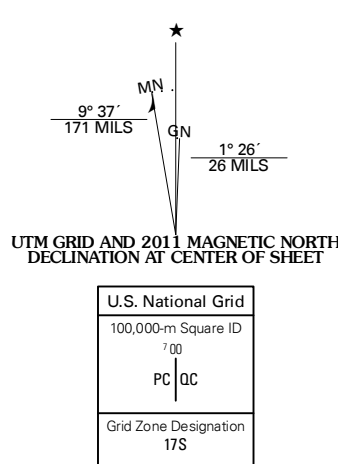


TENTH LEGION QUADRANGLE  
VIRGINIA  
7.5-MINUTE SERIES



Produced by the United States Geological Survey  
North American Datum of 1983 (NAD83)  
World Geodetic System of 1984 (WGS84). Projection and  
1 000-meter grid: Universal Transverse Mercator, Zone 17S  
10 000-foot ticks: Virginia Coordinate System of 1983 (north  
zone)

Imagery.....NAIP, July 2009 - October 2009  
Roads.....©2006-2010 Tele Atlas  
Roads within US Forest Service Lands.....FSTopo Data  
with limited Forest Service updates, 2009  
Names.....GNIS, 2010  
Hydrography.....National Hydrography Dataset, 2009  
Contours.....National Elevation Dataset, 1999



CONTOUR INTERVAL 20 FEET  
NORTH AMERICAN VERTICAL DATUM OF 1988  
This map was produced to conform with version 0.5.10 of the  
draft USGS Standards for 7.5-Minute Quadrangle Maps.  
A metadata file associated with this product is draft version 0.5.12



QUADRANGLE LOCATION

|             |              |             |
|-------------|--------------|-------------|
| Timberville | New Market   | Hamburg     |
| Broadway    | Tenth Legion | Stanley     |
| Harrisburg  | Elkton West  | Elkton East |

ADJOINING 7.5 QUADRANGLES

ROAD CLASSIFICATION

|                  |                         |
|------------------|-------------------------|
| Interstate Route | State Route             |
| US Route         | Local Road              |
| Ramp             | 4WD                     |
| FS Primary Route | FS Passenger Route      |
|                  | FS High Clearance Route |

Check with local Forest Service unit  
for current travel conditions and restrictions.

TENTH LEGION, VA  
2011