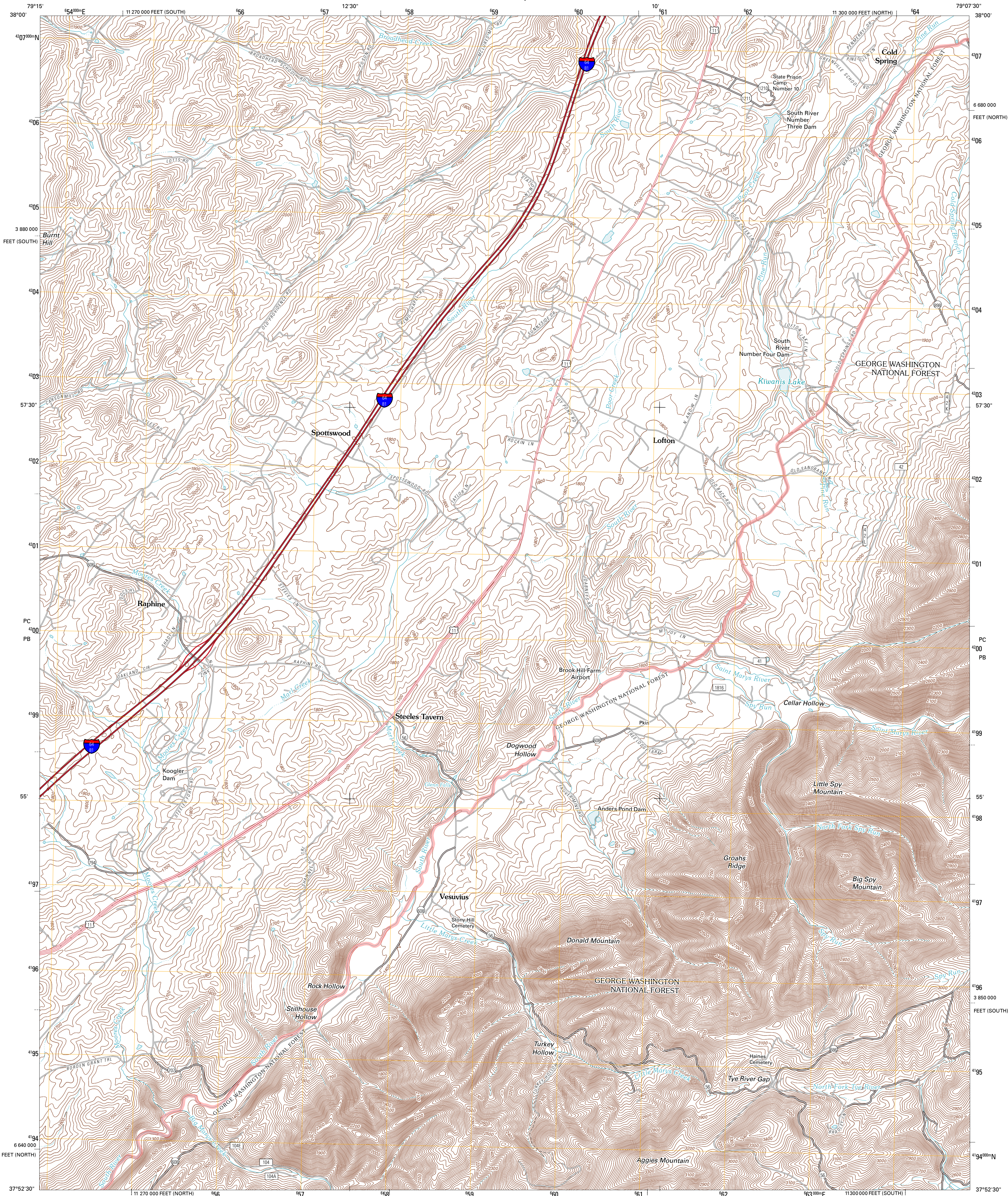




U.S. DEPARTMENT OF THE INTERIOR
U. S. GEOLOGICAL SURVEY

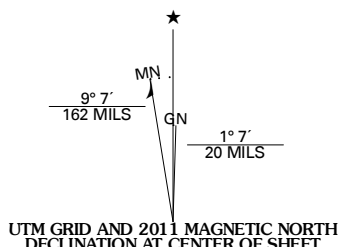


VESUVIUS QUADRANGLE
VIRGINIA
7.5-MINUTE SERIES

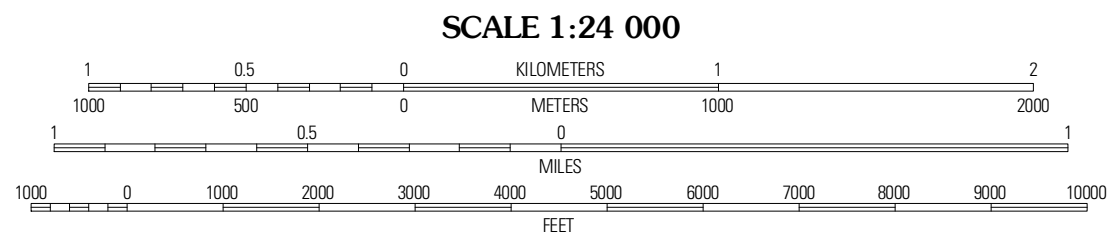


Produced by the United States Geological Survey
North American Datum of 1983 (NAD83)
World Geodetic System of 1984 (WGS84). Projection and
1 000-meter grid: Universal Transverse Mercator, Zone 17S
10 000-foot ticks: Virginia Coordinate System of 1983 (north
and south zones)

Imagery:.....NAIP, June 2009 - October 2009
Roads:.....©2006-2010 Tele Atlas
Roads within US Forest Service Lands:.....FS Topo Data
with limited Forest Service updates, 2009
Names:.....GNIS, 2010
Hydrography:.....National Hydrography Dataset, 2009
Contours:.....National Elevation Dataset, 1999



U.S. National Grid
100,000-m Square ID
PC = 17S
PB = 17S
Grid Zone Designation
17S



CONTOUR INTERVAL 20 FEET
NORTH AMERICAN VERTICAL DATUM OF 1988
This map was produced to conform with version 0.5.10 of the
draft USGS Standards for 7.5-Minute Quadrangle Maps.
A metadata file associated with this product is draft version 0.5.12



Augusta Springs	Greenville	Staarts Draft
Brownsburg	Vesuvius	Big Levels
Cornwall	Montebello	Massies Mill

ADJOINING 7.5 QUADRANGLES

ROAD CLASSIFICATION

Interstate Route
US Route
Ramp
State Route
Local Route
4WD
FS Primary Route
US Route
FS Passenger Route
FS High Clearance Route

Check with local Forest Service unit
for current travel conditions and restrictions.

VESUVIUS, VA
2011