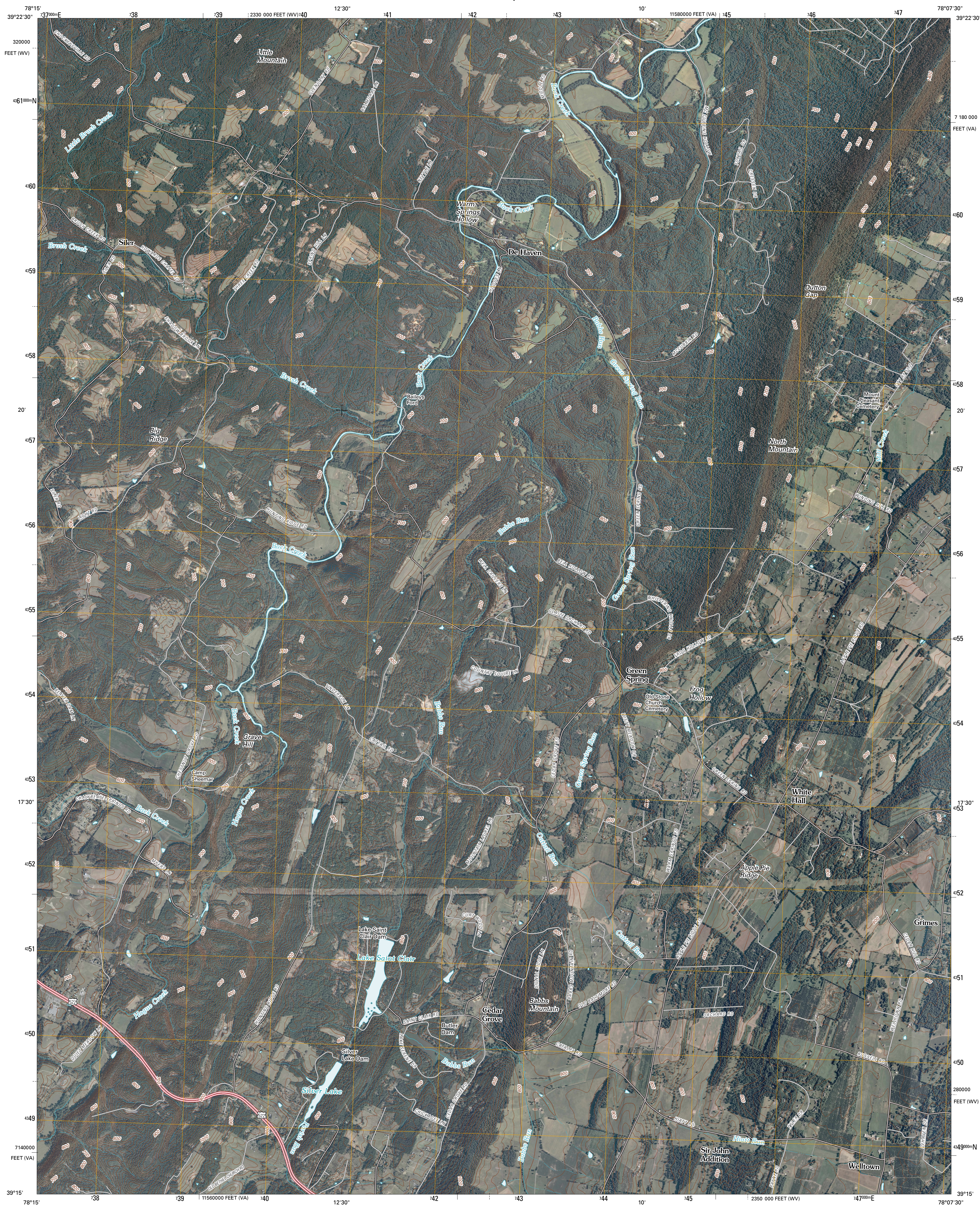




U.S. DEPARTMENT OF THE INTERIOR
U. S. GEOLOGICAL SURVEY

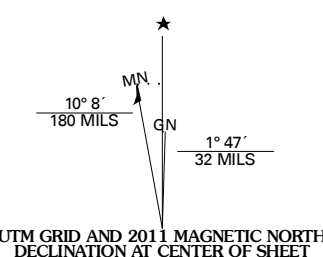


WHITE HALL QUADRANGLE
VIRGINIA-WEST VIRGINIA
7.5-MINUTE SERIES

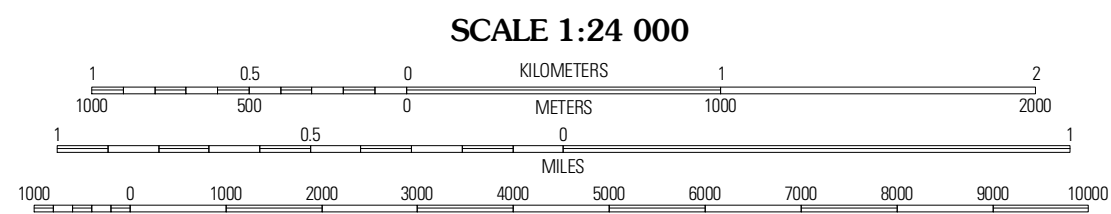


Produced by the United States Geological Survey
North American Datum of 1983 (NAD83)
World Geodetic System of 1984 (WGS84). Projection and
1 000-meter grid: Universal Transverse Mercator, Zone 17S
10 000-foot ticks: Virginia Coordinate System of 1983
(north zone)
and West Virginia Coordinate System of 1983
(north zone)

Imagery:.....NAIP, July 2009 - October 2009
Roads:.....©2006-2010 Tele Atlas
Names:.....GNIS, 2009
Hydrography:.....National Hydrography Dataset, 2009
Contours:.....National Elevation Dataset, 2006

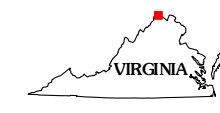


U.S. National Grid 100,000m Square ID
00
Grid Zone Designation
17S



CONTOUR INTERVAL 20 FEET
NORTH AMERICAN VERTICAL DATUM OF 1988

This map was produced to conform with version 0.5.10 of the
draft USGS Standards for 7.5-Minute Quadrangle Maps.
A metadata file associated with this product is draft version 0.5.11



Ridge	Glengary	Tablers Station
Gore	White Hall	Inwood
Hayfield	Winchester	Stephenson

ADJOINING 7.5' QUADRANGLES

ROAD CLASSIFICATION
Interstate Route
US Route
Ramp
State Route
Local Road
4WD

WHITE HALL, VA-WV
2011