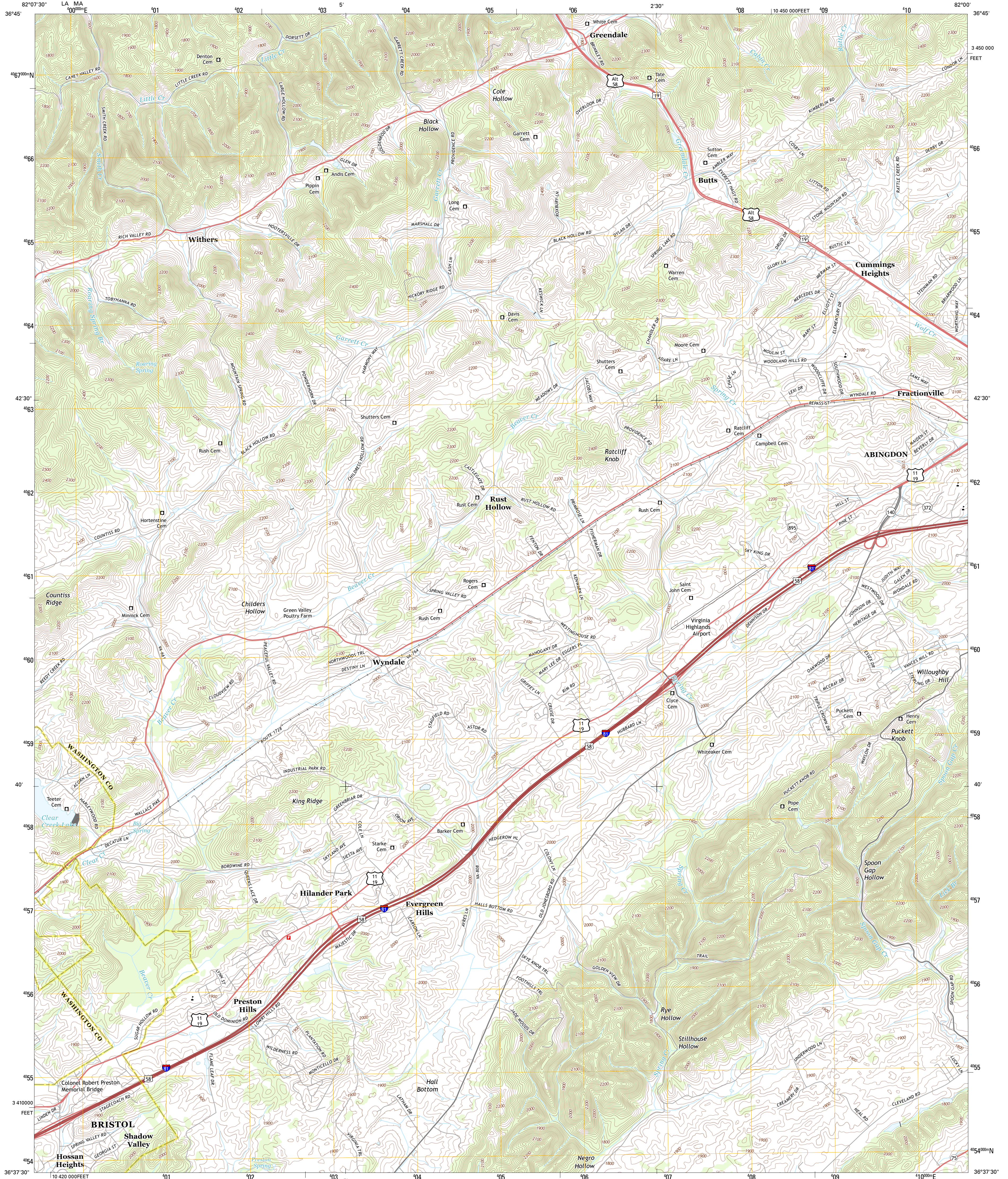




U.S. DEPARTMENT OF THE INTERIOR  
U. S. GEOLOGICAL SURVEY



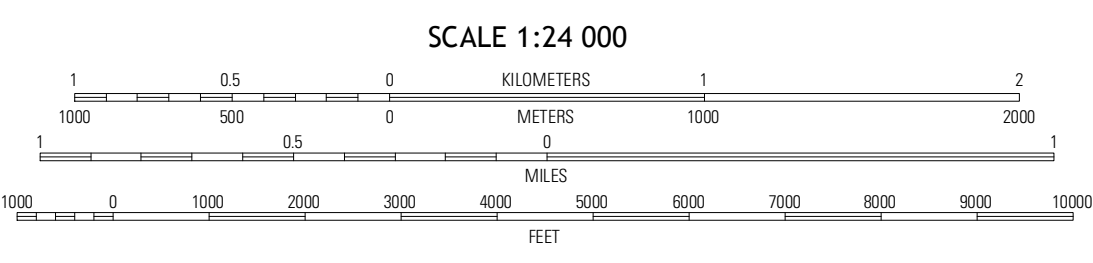
WYNDALE QUADRANGLE  
VIRGINIA  
7.5-MINUTE SERIES



Produced by the United States Geological Survey  
North American Datum of 1983 (NAD83)  
World Geodetic System of 1984 (WGS84). Projection and  
1 000-meter grid: Universal Transverse Mercator, Zone 17S  
10 000-foot ticks: Virginia Coordinate System of 1983 (south  
zone)

UTM GRID AND 2013 MAGNETIC NORTH  
DECLINATION AT CENTER OF SHEET

U.S. National Grid  
100,000-m Square ID  
40  
LA MA  
Grid Zone Designation  
17S



ROAD CLASSIFICATION

- Expressway
- Secondary Hwy
- Ramp
- Local Connector
- Local Road
- 4WD
- Interstate Route
- US Route
- State Route

QUADRANGLE LOCATION

Hannoverville	Brunley	Hayters Gap
Wallace	Wyndale	Abingdon
Bristol	Holston Valley	Shady Valley

WYNDALE, VA  
2013

CONTOUR INTERVAL 20 FEET  
NORTH AMERICAN VERTICAL DATUM OF 1988  
This map was produced to conform with the  
National Geospatial Program US Topo Product Standard, 2011.  
A metadata file associated with this product is draft version 0.6.11

Imagery: NAIIP, June 2012  
Roads: ©2006-2012 TomTom  
Names: ©2006-2012 TomTom  
Hydrography: National Hydrography Dataset, 2012  
Contours: National Elevation Dataset, 1999  
Boundaries: Census, IBWC, IBC, USGS, 1972-2012

ADJOINING 7.5 QUADRANGLES