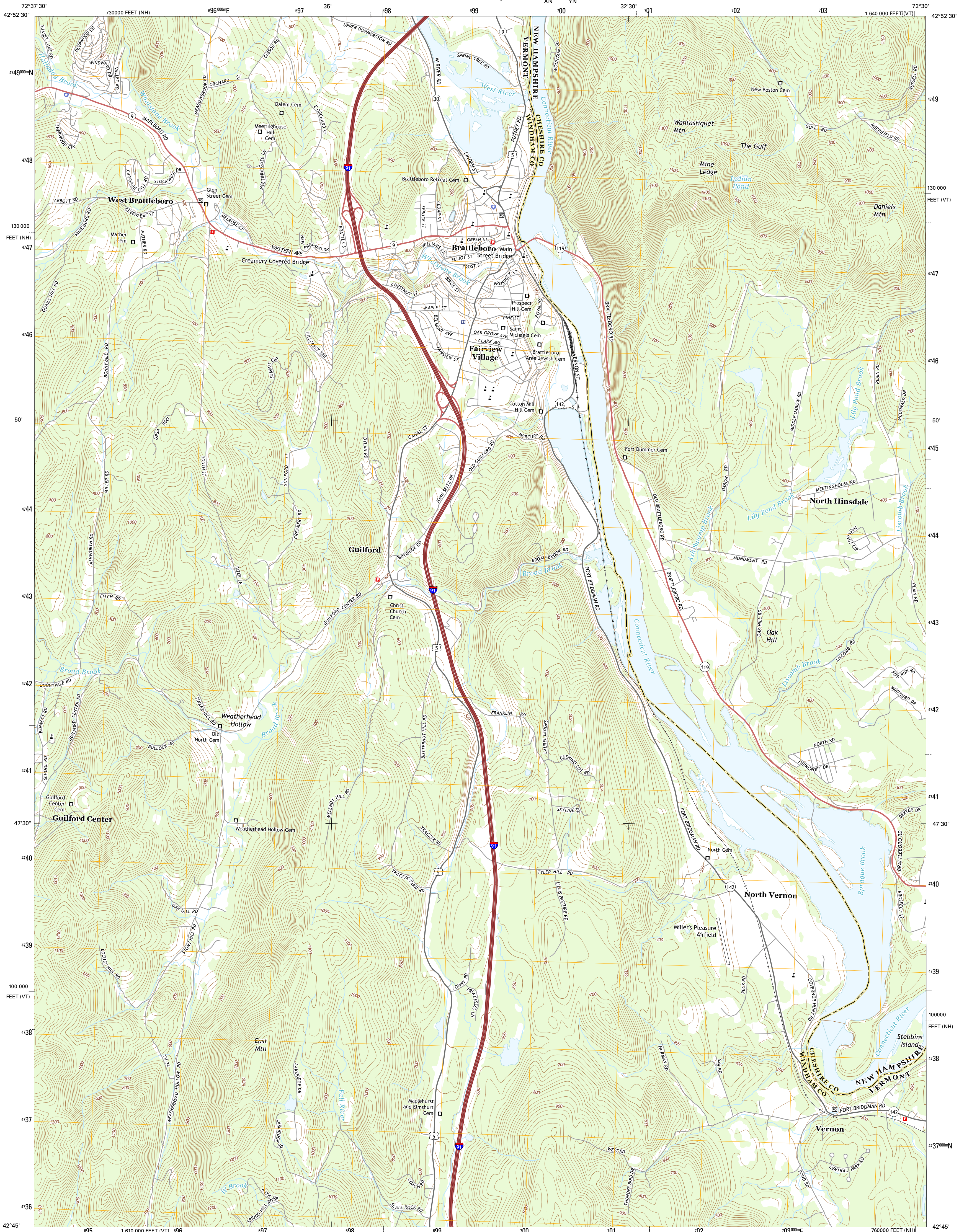




U.S. DEPARTMENT OF THE INTERIOR  
U.S. GEOLOGICAL SURVEY



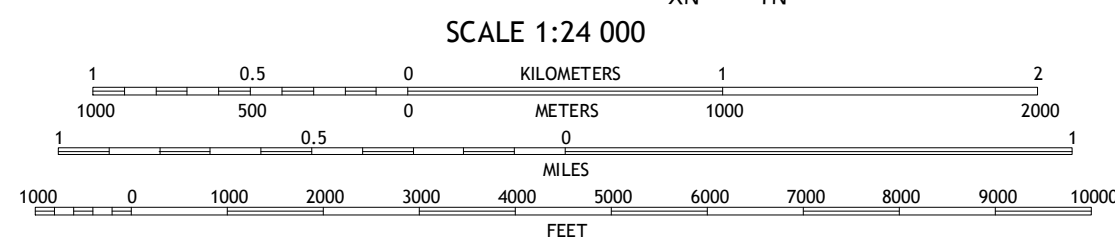
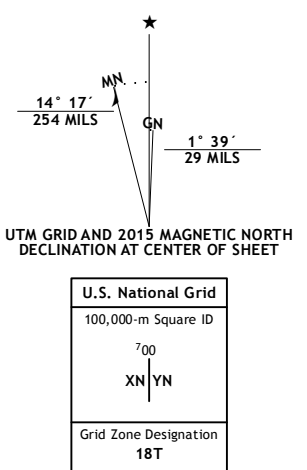
BRATTLEBORO QUADRANGLE  
VERMONT-NEW HAMPSHIRE  
7.5-MINUTE SERIES



Produced by the United States Geological Survey  
North American Datum of 1983 (NAD83)  
World Geodetic System of 1984 (WGS84). Projection and  
1 000-meter grid: Universal Transverse Mercator, Zone 18T  
10 000-foot ticks: Vermont Coordinate System of 1983, New  
Hampshire Coordinate System of 1983

This map is not a legal document. Boundaries may be  
generalized for this map scale. Private lands within government  
reservations may not be shown. Obtain permission before  
entering private lands.

Imagery: .....N.A.P. July 2012  
Roads: .....HERE, ©2013 2014  
Names: .....GNIS, 2015  
Hydrography: .....National Hydrography Dataset, 2012  
Contours: .....National Elevation Dataset, 2011  
Boundaries: .....Multiple sources; see metadata file 1972 - 2015



ROAD CLASSIFICATION

Expressway	Local Connector	State Route
Secondary Hwy	Local Road	
Ramp	4WD	
Interstate Route	US Route	

ADJOINING QUADRANGLES

1	2	3
4	5	6
7	8	

1 Newfane  
2 Putney  
3 Spofford  
4 Governors Mountain  
5 Hinsdale  
6 Colrain  
7 Bennington  
8 Northfield

BRATTLEBORO, VT-NH  
2015



NSN 7540-01-000-0000  
3 0 1 8 4 4 4 1 2 4 5  
U.S. G.S. X 2 4 K 5 3 0 5  
NGA REF. NO.