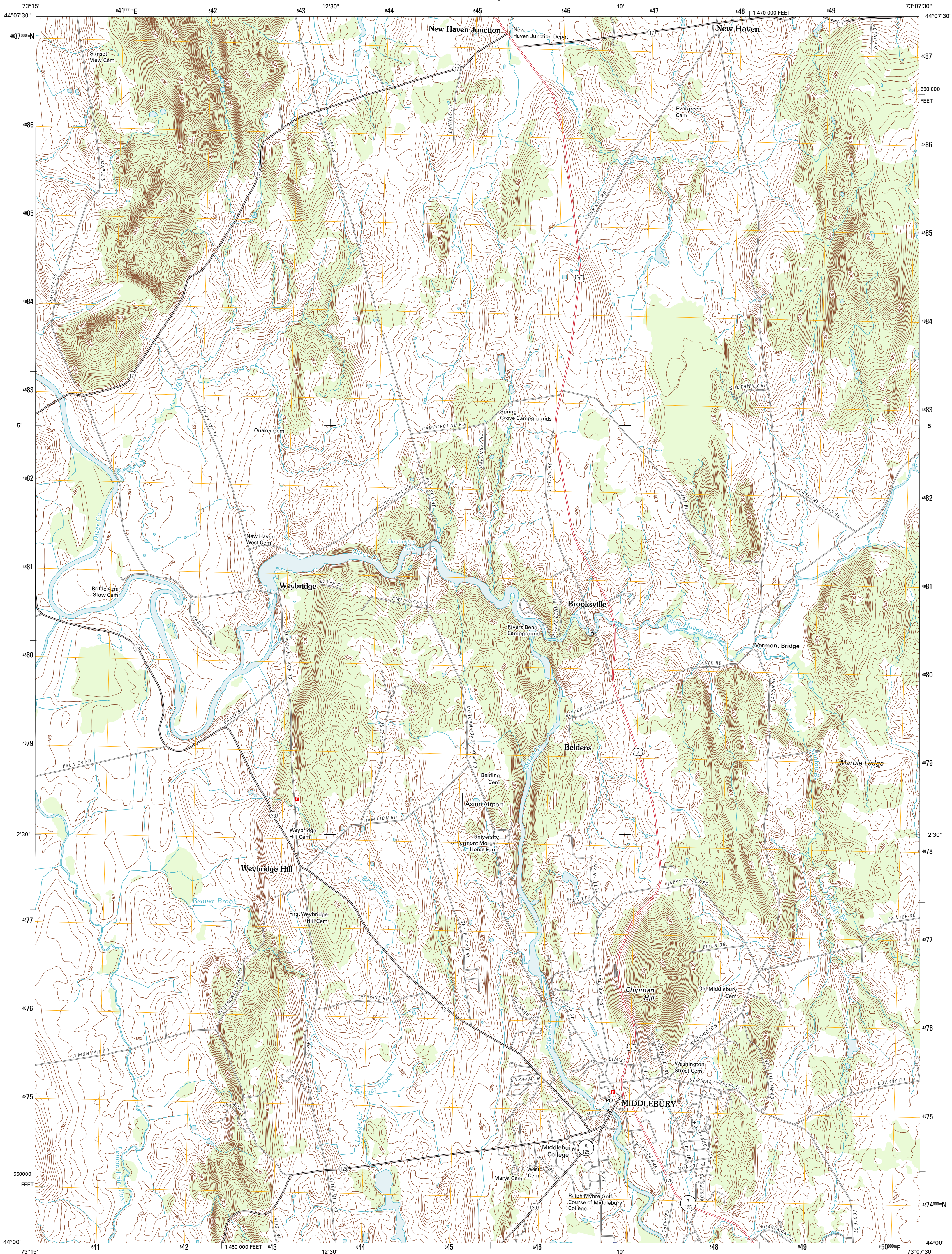




U.S. DEPARTMENT OF THE INTERIOR  
U. S. GEOLOGICAL SURVEY

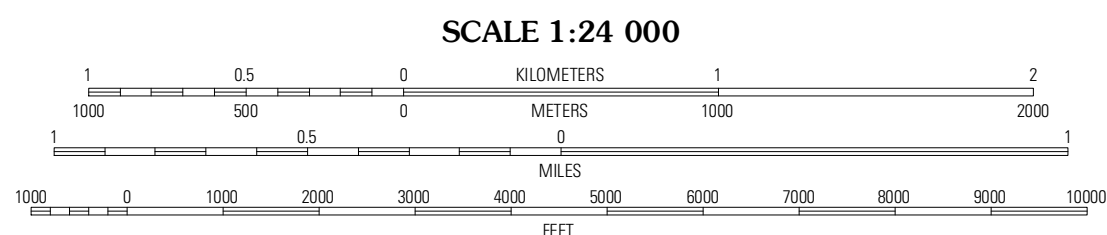
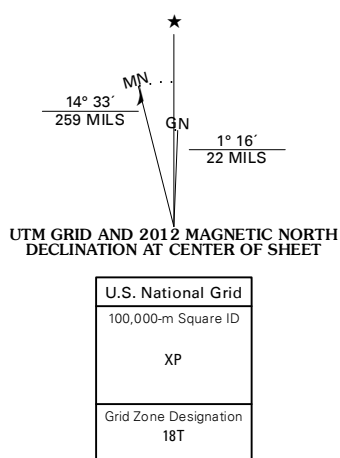


MIDDLEBURY QUADRANGLE  
VERMONT-ADDISON CO.  
7.5-MINUTE SERIES

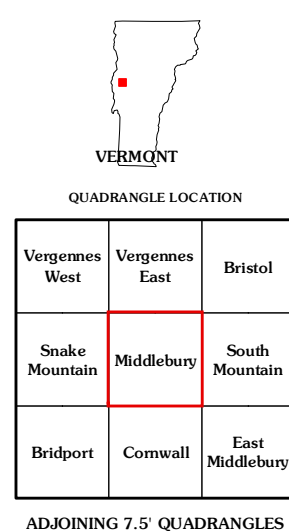


Produced by the United States Geological Survey  
North American Datum of 1983 (NAD83)  
World Geodetic System of 1984 (WGS84). Projection and  
1 000-meter grid: Universal Transverse Mercator, Zone 18T  
10 000-foot ticks: Vermont Coordinate System of 1983

Imagery.....NAP, August 2011  
Roads.....©2006-2011 TomTom  
Names.....GNIS, 2011  
Hydrography.....National Hydrography Dataset, 2011  
Contours.....National Elevation Dataset, 2011  
Boundaries.....Census, IBWC, IBC, USGS, 1972 - 2010



CONTOUR INTERVAL 10 FEET  
NORTH AMERICAN VERTICAL DATUM OF 1988  
This map was produced to conform with the  
National Geospatial Program US Topo Product Standard, 2011.  
A metadata file associated with this product is draft version 0.6.2



ROAD CLASSIFICATION  
Interstate Route (thick red line)  
US Route (red line)  
Ramp (red line with cross-ticks)  
State Route (thin black line)  
Local Road (thin black line with cross-ticks)  
4WD (dashed black line)  
Interstate Route (blue shield)  
US Route (white shield)  
State Route (white circle)

MIDDLEBURY, VT  
2012