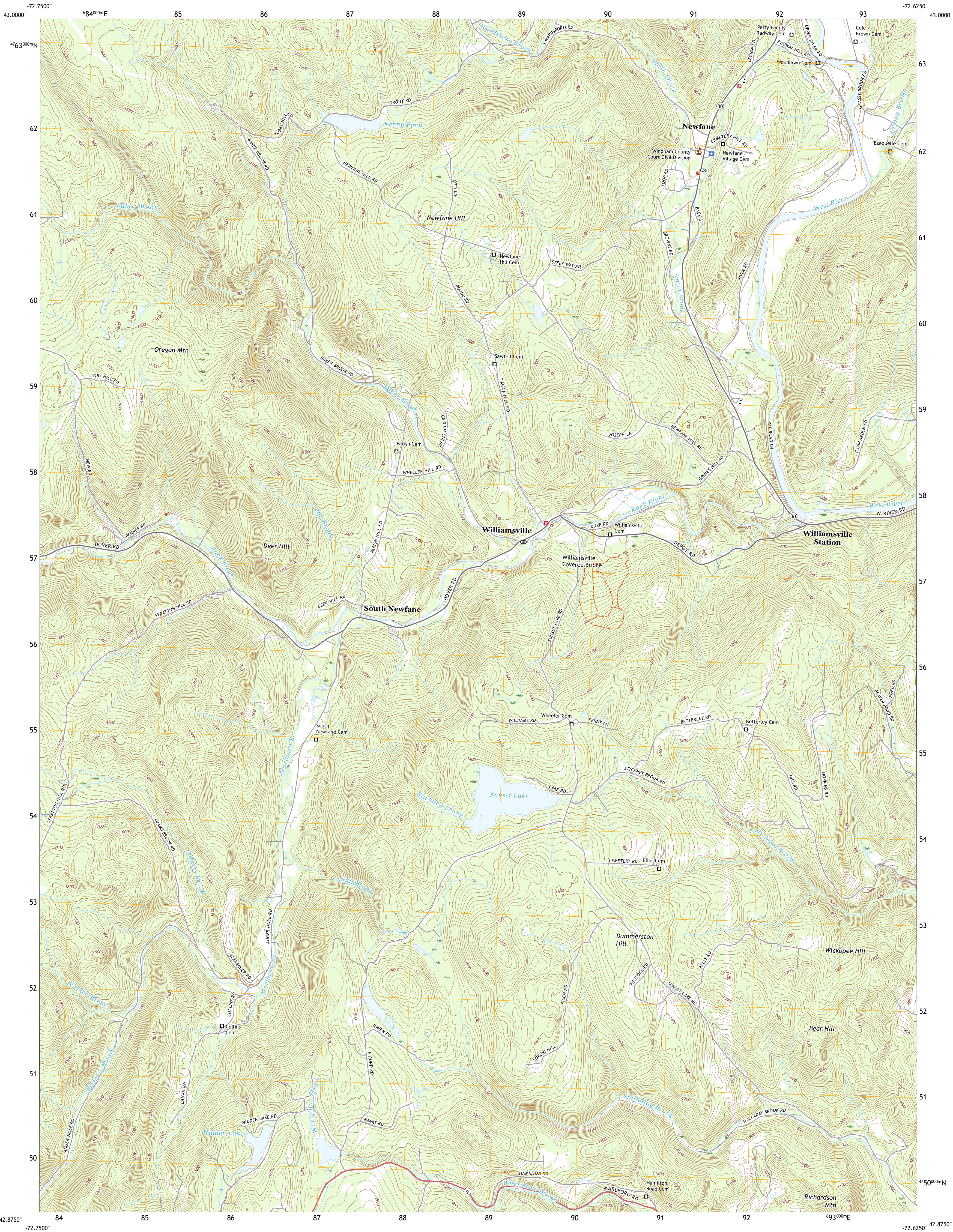




U.S. DEPARTMENT OF THE INTERIOR  
U.S. GEOLOGICAL SURVEY

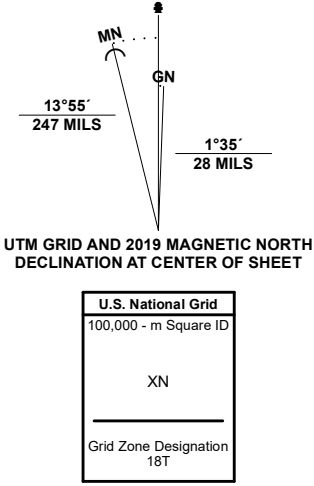


NEWFANE QUADRANGLE  
VERMONT - WINDHAM COUNTY  
7.5-MINUTE SERIES



Produced by the United States Geological Survey

North American Datum of 1983 (NAD83)  
World Geodetic System of 1984 (WGS84) - Projection and  
1 000-meter grid/Universal Transverse Mercator, Zone 18T  
This map is not a legal document. Boundaries may be  
generalized for this map scale. Private lands within government  
reservations may not be shown. Obtain permission before  
entering private lands.  
Imagery.....NAIP, November 2018 - January 2019  
Roads.....U.S. Census Bureau, 2016  
Names.....GNIS, 1980 - 2020  
Hydrography.....National Hydrography Dataset, 2011 - 2021  
Contours.....National Elevation Dataset, 2017  
Boundaries.....Multiple sources; see metadata file 2018 - 2019  
Wetlands.....FWS National Wetlands Inventory 1977 - 2012



CONTOUR INTERVAL 20 FEET  
NORTH AMERICAN VERTICAL DATUM OF 1988  
This map was produced to conform with the  
National Geospatial Program US Topo Product Standard.



1	2	3
4	5	6
7	8	9

ADJOINING QUADRANGLES

1 Jamaica  
2 Townshend  
3 Westminster West  
4 West Dover  
5 Putney  
6 Jacksonville  
7 Governors Mountain  
8 Brattleboro

ROAD CLASSIFICATION		
Expressway	Local Connector	
Secondary Hwy	Local Road	
Ramp	4WD	
Interstate Route	US Route	State Route

NEWFANE, VT  
2021

