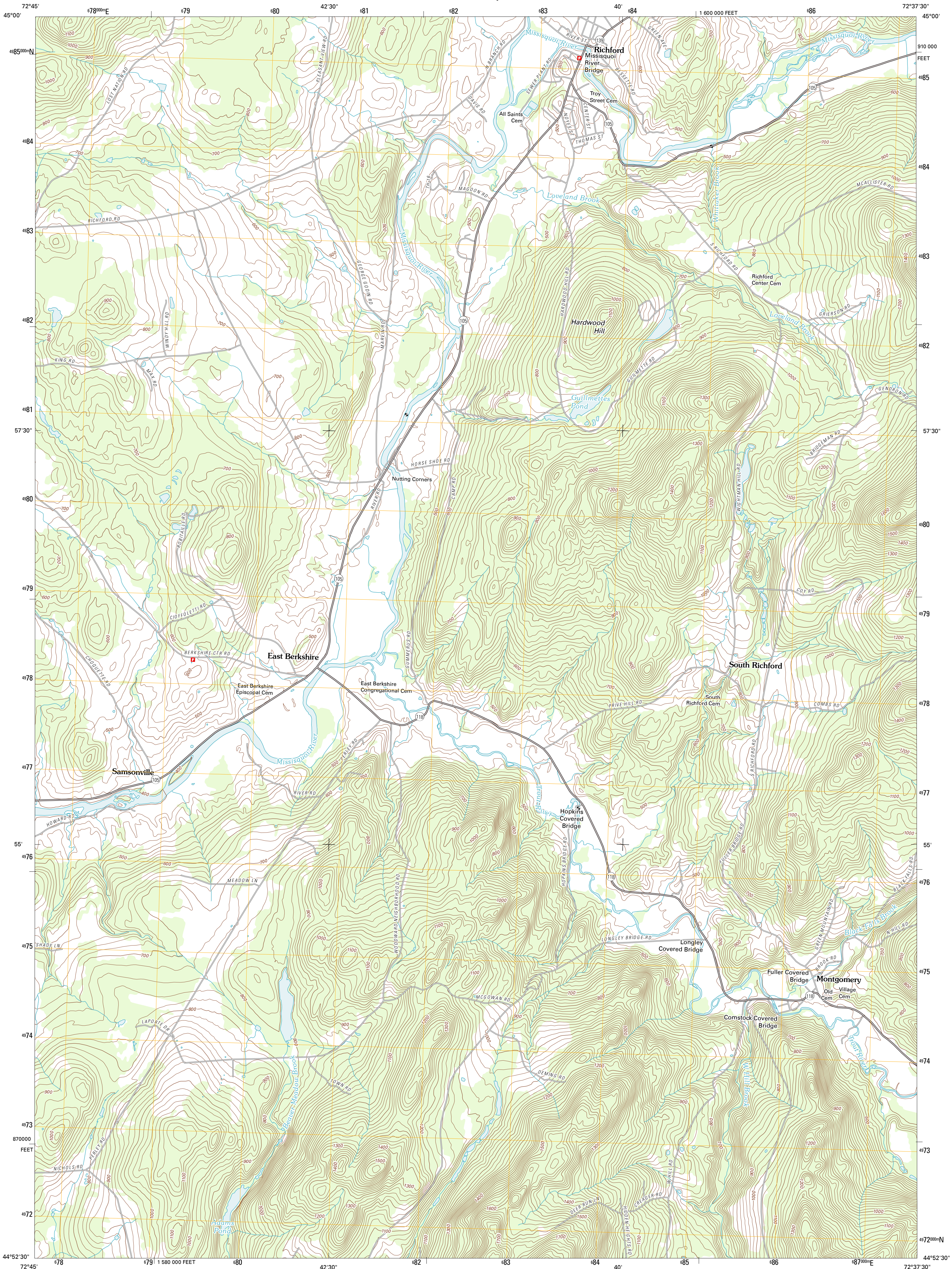




U.S. DEPARTMENT OF THE INTERIOR  
U. S. GEOLOGICAL SURVEY

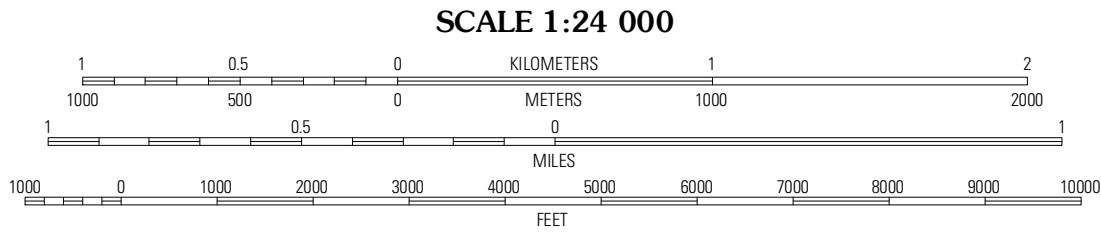
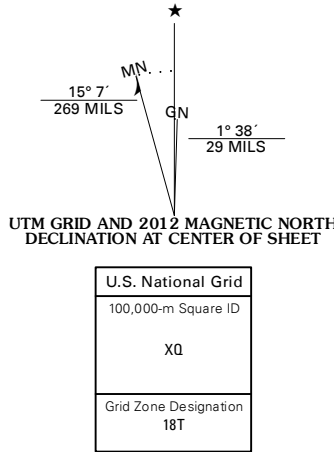


**RICHFORD QUADRANGLE**  
VERMONT-FRANKLIN CO.  
7.5-MINUTE SERIES



Produced by the United States Geological Survey  
North American Datum of 1983 (NAD83)  
World Geodetic System of 1984 (WGS84). Projection and  
1 000-meter grid: Universal Transverse Mercator, Zone 18T  
10 000-foot ticks: Vermont Coordinate System of 1983

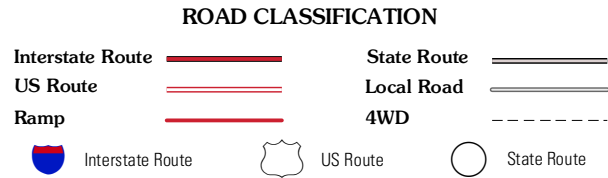
Imagery.....N.A.P., September 2011  
Roads.....©2006-2011, 10m  
Names.....GNIS, 2011  
Hydrography.....National Hydrography Dataset, 2011  
Contours.....National Elevation Dataset, 2011  
Boundaries.....Census, IBWC, IBC, USGS, 1972 - 2010



CONTOUR INTERVAL 20 FEET  
NORTH AMERICAN VERTICAL DATUM OF 1988  
This map was produced to conform with the  
National Geospatial Program US Topo Product Standard, 2011.  
A metadata file associated with this product is draft version 0.6.2



Enosburg Falls OE N	Richford OE N	Jay Peak OE N
Enosburg Falls	Richford	Jay Peak
Bakersfield	Cold Hollow Mountain	Hazens Notch



**RICHFORD, VT**  
2012