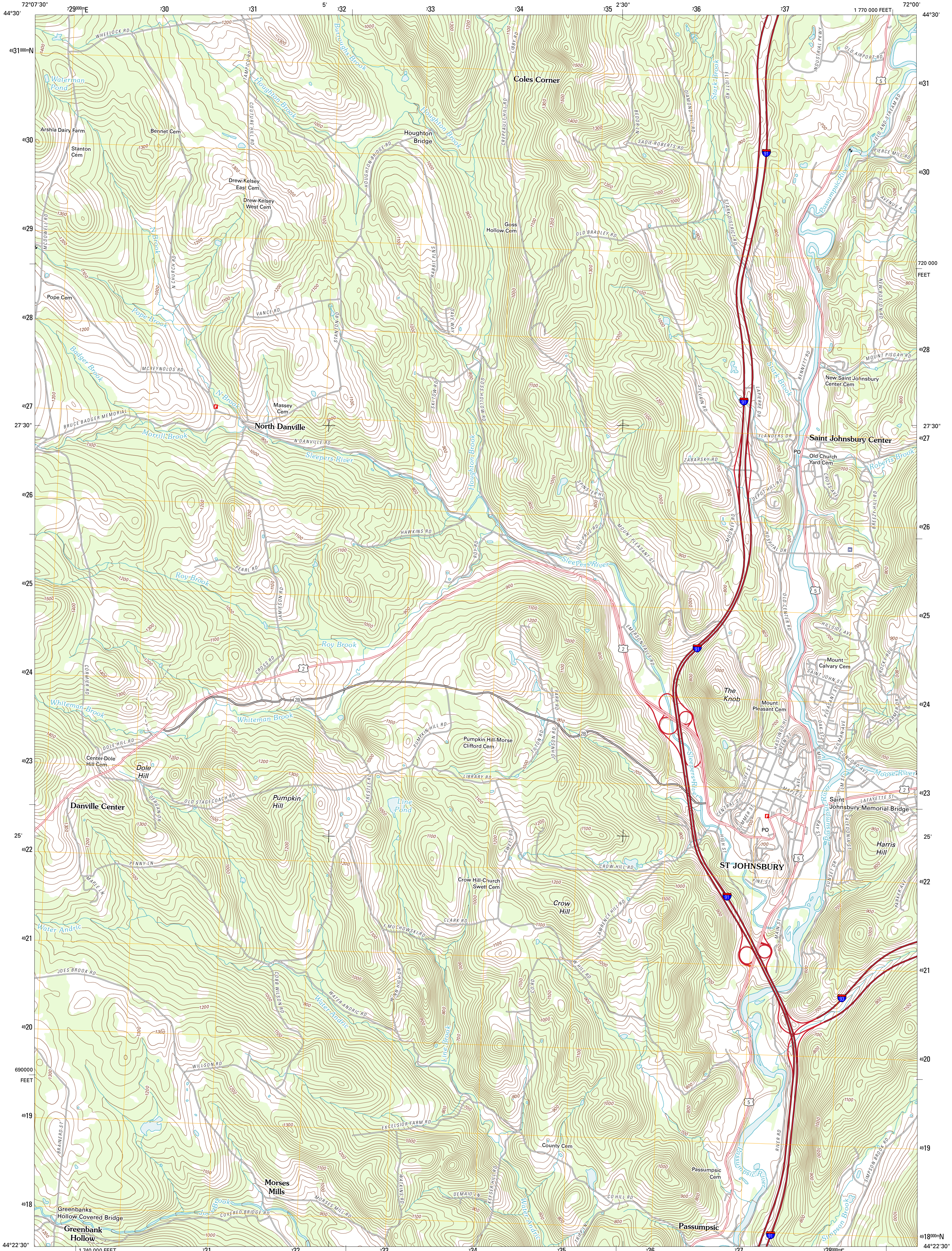




U.S. DEPARTMENT OF THE INTERIOR
U. S. GEOLOGICAL SURVEY

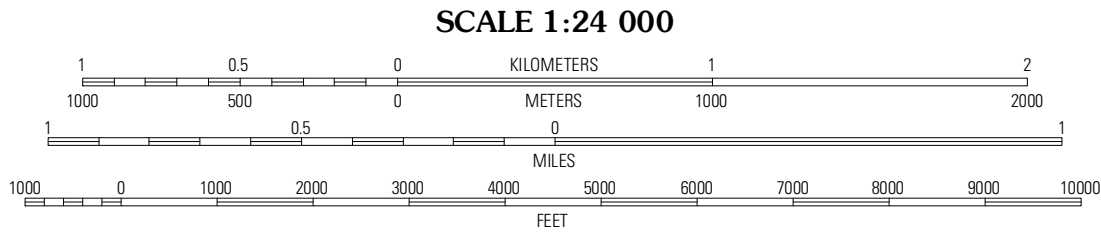
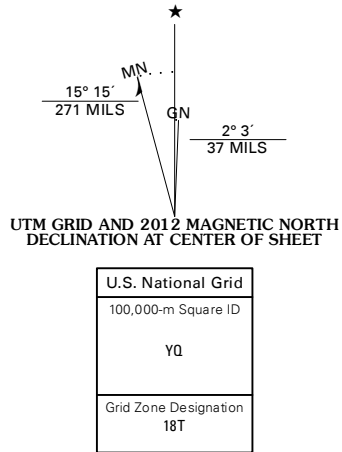


SAINT JOHNSBURY QUADRANGLE
VERMONT-CALEDONIA CO.
7.5-MINUTE SERIES



Produced by the United States Geological Survey
North American Datum of 1983 (NAD83)
World Geodetic System of 1984 (WGS84). Projection and
1 000-meter grid. Universal Transverse Mercator, Zone 18T
10 000-foot ticks. Vermont Coordinate System of 1983

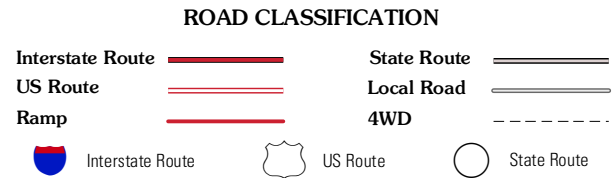
Imagery.....NAP, August 2011 - September 2011
Roads.....©2006-2011 TomTom
Names.....GNIS, 2011
Hydrography.....National Hydrography Dataset, 2011
Contours.....National Elevation Dataset, 2011
Boundaries.....Census, IBWC, IBC, USGS, 1972 - 2010



CONTOUR INTERVAL 20 FEET
NORTH AMERICAN VERTICAL DATUM OF 1988
This map was produced to conform with the
National Geospatial Program US Topo Product Standard, 2011.
A metadata file associated with this product is draft version 0.6.2



| | | |
|-----------|-----------------|-----------------|
| Stannard | Lyndonville | Burke Mountain |
| Joes Pond | Saint Johnsbury | Concord |
| Peacham | Barnet | Lower Waterford |



SAINT JOHNSBURY, VT
2012