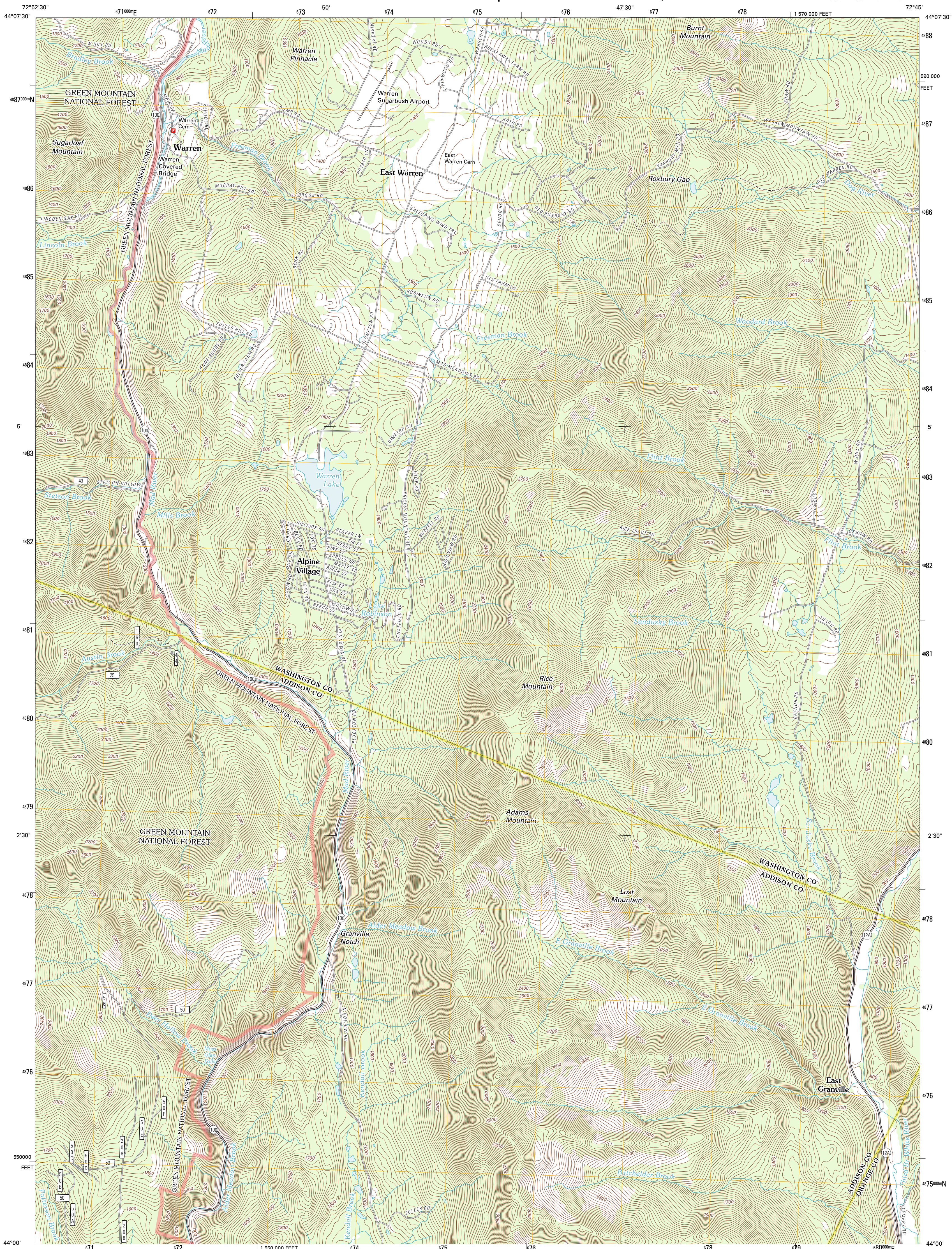




U.S. DEPARTMENT OF THE INTERIOR  
U. S. GEOLOGICAL SURVEY

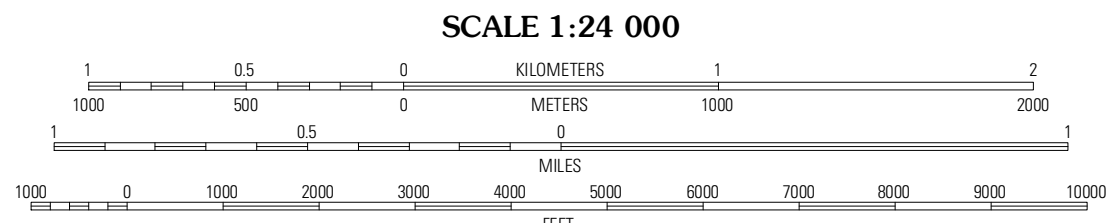
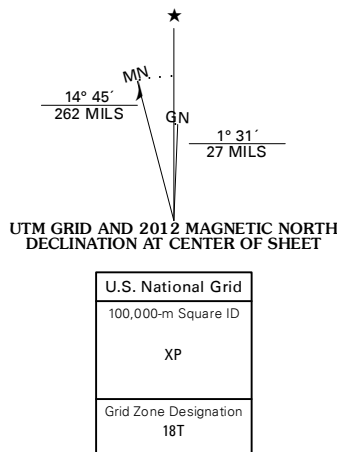


WARREN QUADRANGLE  
VERMONT  
7.5-MINUTE SERIES

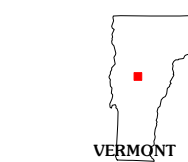


Produced by the United States Geological Survey  
North American Datum of 1983 (NAD83)  
World Geodetic System of 1984 (WGS84). Projection and  
1 000-meter grid: Universal Transverse Mercator, Zone 18T  
10 000-foot ticks: Vermont Coordinate System of 1983

Imagery.....NAP, September 2011  
Roads.....©2006-2011 TomTom  
Roads within US Forest Service Lands.....FS Topo Data  
with limited Forest Service updates, 2009  
Names.....GNIS, 2011  
Hydrography.....National Hydrography Dataset, 2011  
Contours.....National Elevation Dataset, 2007  
Boundaries.....Census, IBWC, IBC, USGS, 1972 - 2010



CONTOUR INTERVAL 20 FEET  
NORTH AMERICAN VERTICAL DATUM OF 1988  
This map was produced to conform with the  
National Geospatial Program US Topo Product Standard, 2011.  
A metadata file associated with this product is draft version 0.6.2



Mount Ellen	Waitsfield	Northfield
Lincoln	Warren	Roxbury
Bread Loaf	Hancock	Randolph

ROAD CLASSIFICATION  
Interstate Route  
US Route  
Ramp  
FS Interstate Route  
FS Passenger Route  
FS High Clearance Route  
State Route  
Local Road  
4WD  
Check with local Forest Service unit  
for current travel conditions and restrictions.

WARREN, VT  
2012