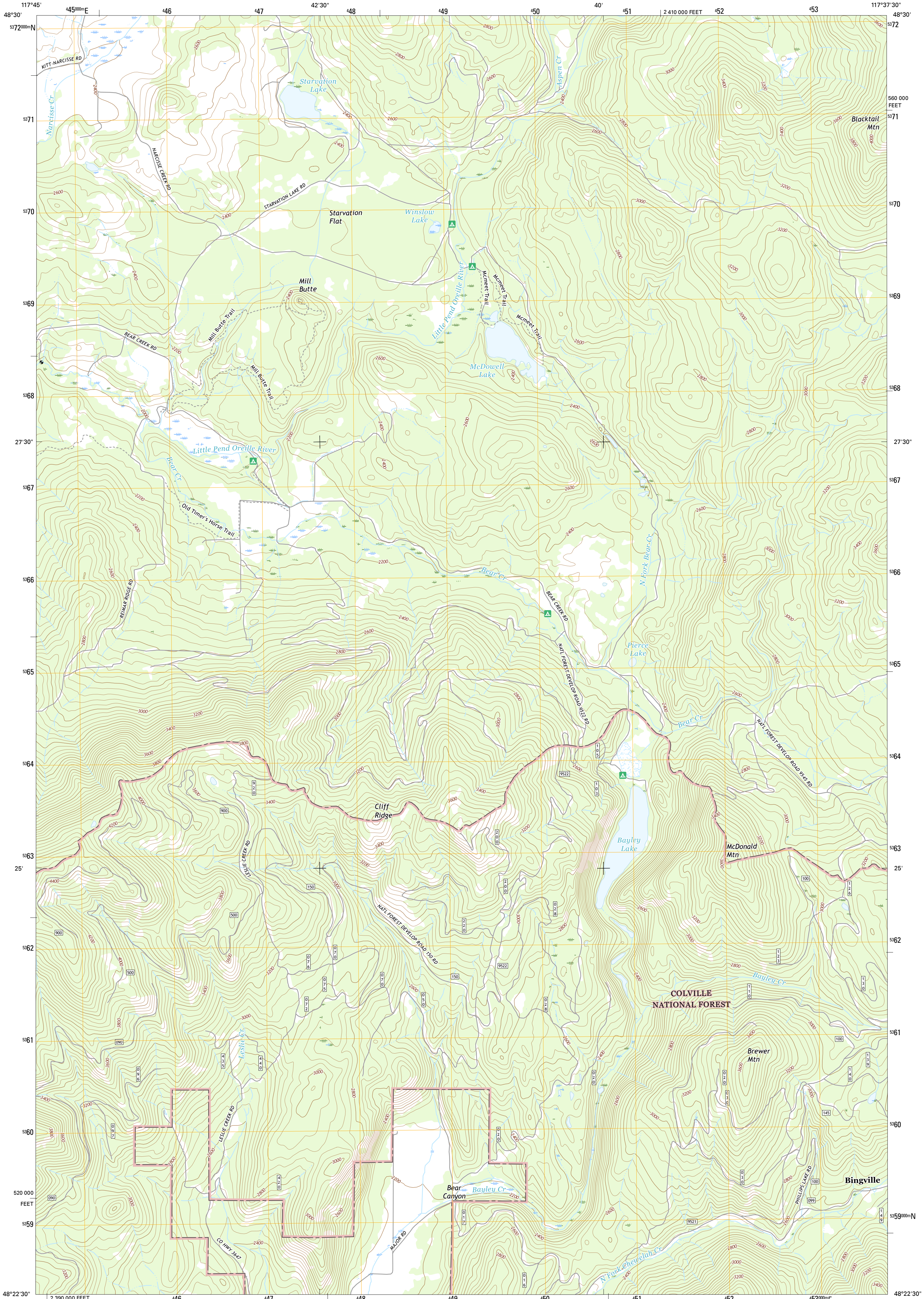




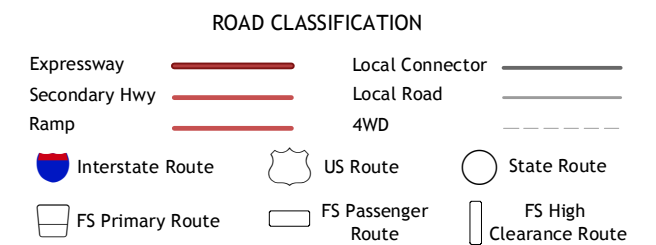
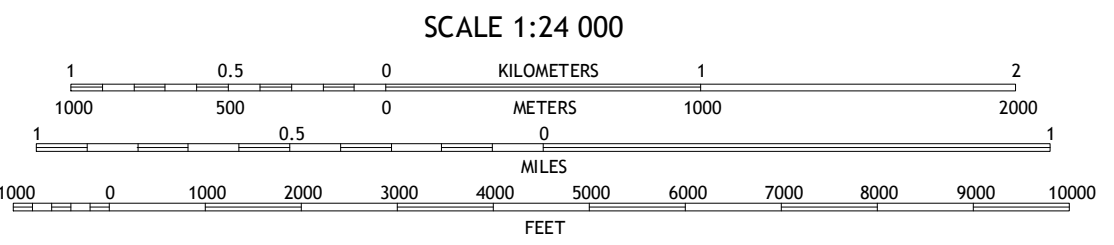
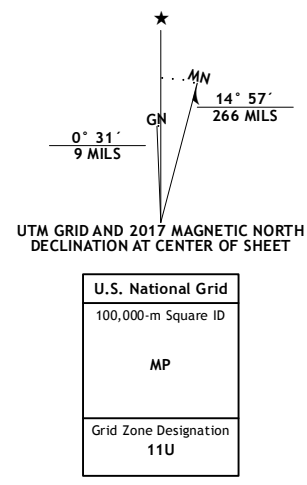
U.S. DEPARTMENT OF THE INTERIOR
U.S. GEOLOGICAL SURVEY



CLIFF RIDGE QUADRANGLE
WASHINGTON-STEVENS CO.
7.5-MINUTE SERIES



Produced by the United States Geological Survey
North American Datum of 1983 (NAD83)
World Geodetic System of 1984 (WGS84). Projection and
1 000-meter grid: Universal Transverse Mercator, Zone 11U
10 000-foot ticks: Washington Coordinate System of 1983 (north
zone)
This map is not a legal document. Boundaries may be
generalized for this map scale. Private lands within government
reservations may not be shown. Obtain permission before
entering private lands.
Imagery:.....NAIP, January 2016
Roads:.....U.S. Census Bureau, 2015 - 2016
Roads within US Forest Service Lands:.....FS Topo Data
with limited Forest Service updates, 2012 - 2016
Names:.....GNS, 2016
Hydrography:.....National Hydrography Dataset, 2016
Contours:.....National Elevation Dataset, 1999
Boundaries:.....Multiple sources; see metadata file 1972 - 2016
Public Land Survey System:.....BLM, 2016
Wetlands:.....FWS National Wetlands Inventory 1977 - 2014



Check with local Forest Service unit
for current travel conditions and restrictions.

CLIFF RIDGE, WA
2017

1	2	3
4	5	6
7	8	

ADJOINING QUADRANGLES

- 1 White Mud Lake
- 2 Park Rapids
- 3 Lake Gillette
- 4 Addy Mountain
- 5 Callispell Peak
- 6 Addy
- 7 Chewelah
- 8 Goddards Peak

