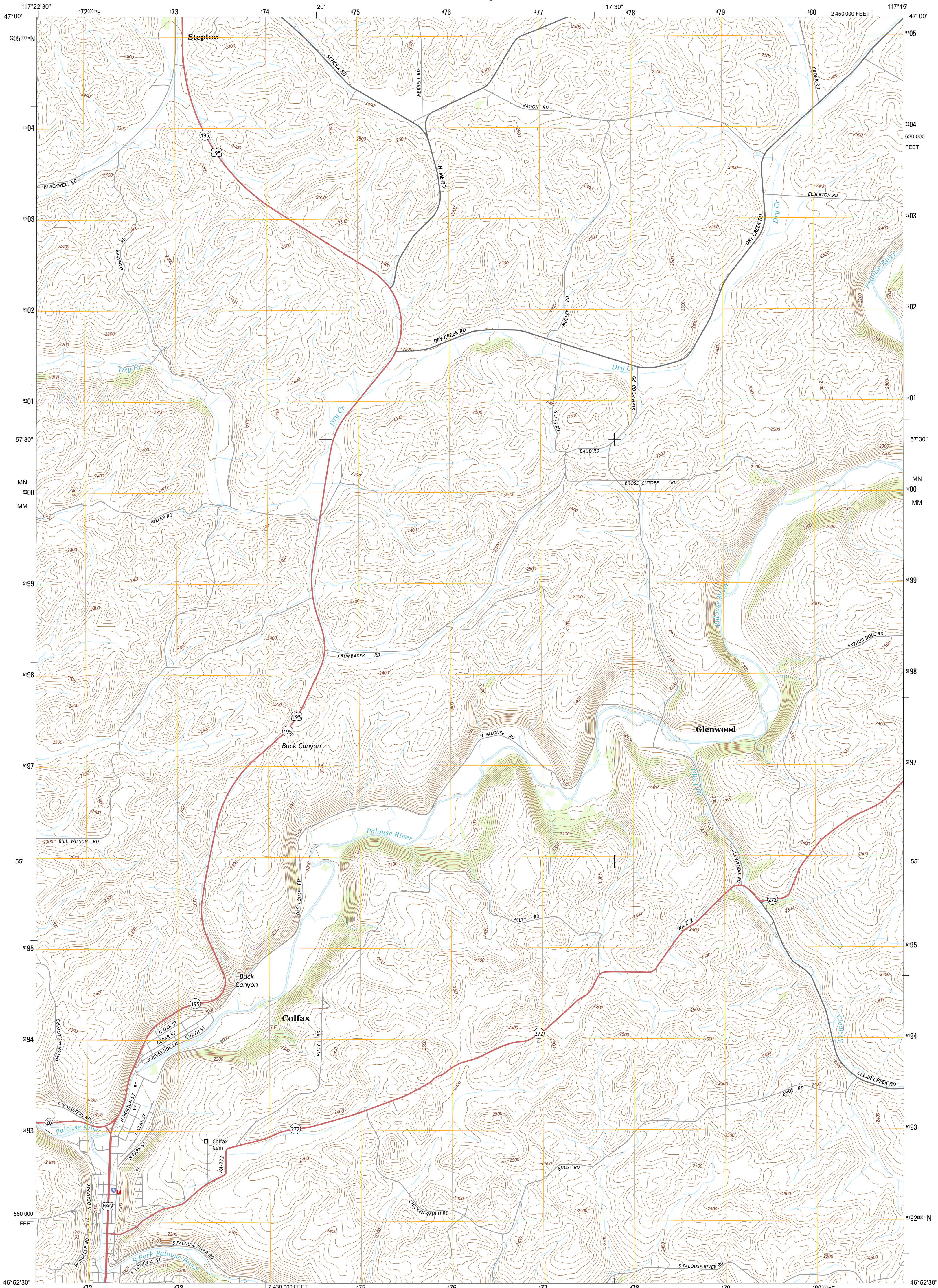




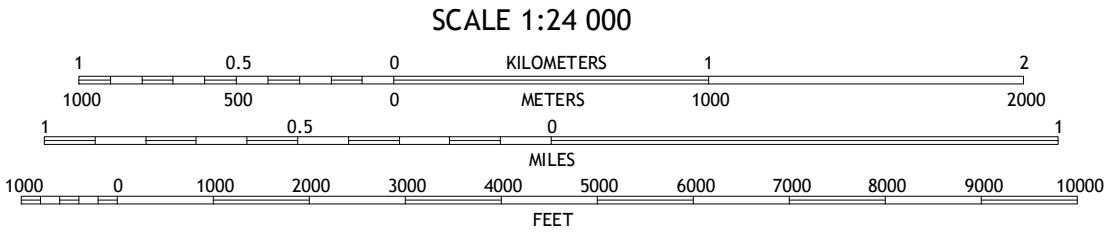
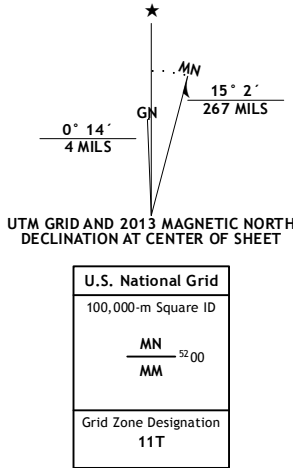
U.S. DEPARTMENT OF THE INTERIOR
U. S. GEOLOGICAL SURVEY



COLFAX NORTH QUADRANGLE
WASHINGTON-WHITMAN CO.
7.5-MINUTE SERIES

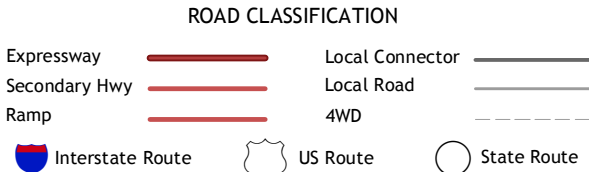


Produced by the United States Geological Survey
North American Datum of 1983 (NAD83)
World Geodetic System of 1984 (WGS84). Projection and
1 000-meter grid: Universal Transverse Mercator, Zone 11T
10 000-foot ticks: Washington Coordinate System of 1983 (south
zone)
This map is not a legal document. Boundaries may be
generalized for this map scale. Private lands within government
reservations may not be shown. Obtain permission before
entering private lands.
Imagery.....NAIP, July 2011
Roads.....©2006-2013 TomTom
Names.....GNIS, 2013
Hydrography.....National Hydrography Dataset, 2011
Contours.....National Elevation Dataset, 2001
Boundaries.....Census, IBC, USGS, 1972 - 2012
Public Land Survey System.....BLM, 2011



QUADRANGLE LOCATION

Thornton	Step toe	Garfield
Diamond	Colfax North	Elberton
Wilcox	Colfax South	Albion



COLFAX NORTH, WA
2013

