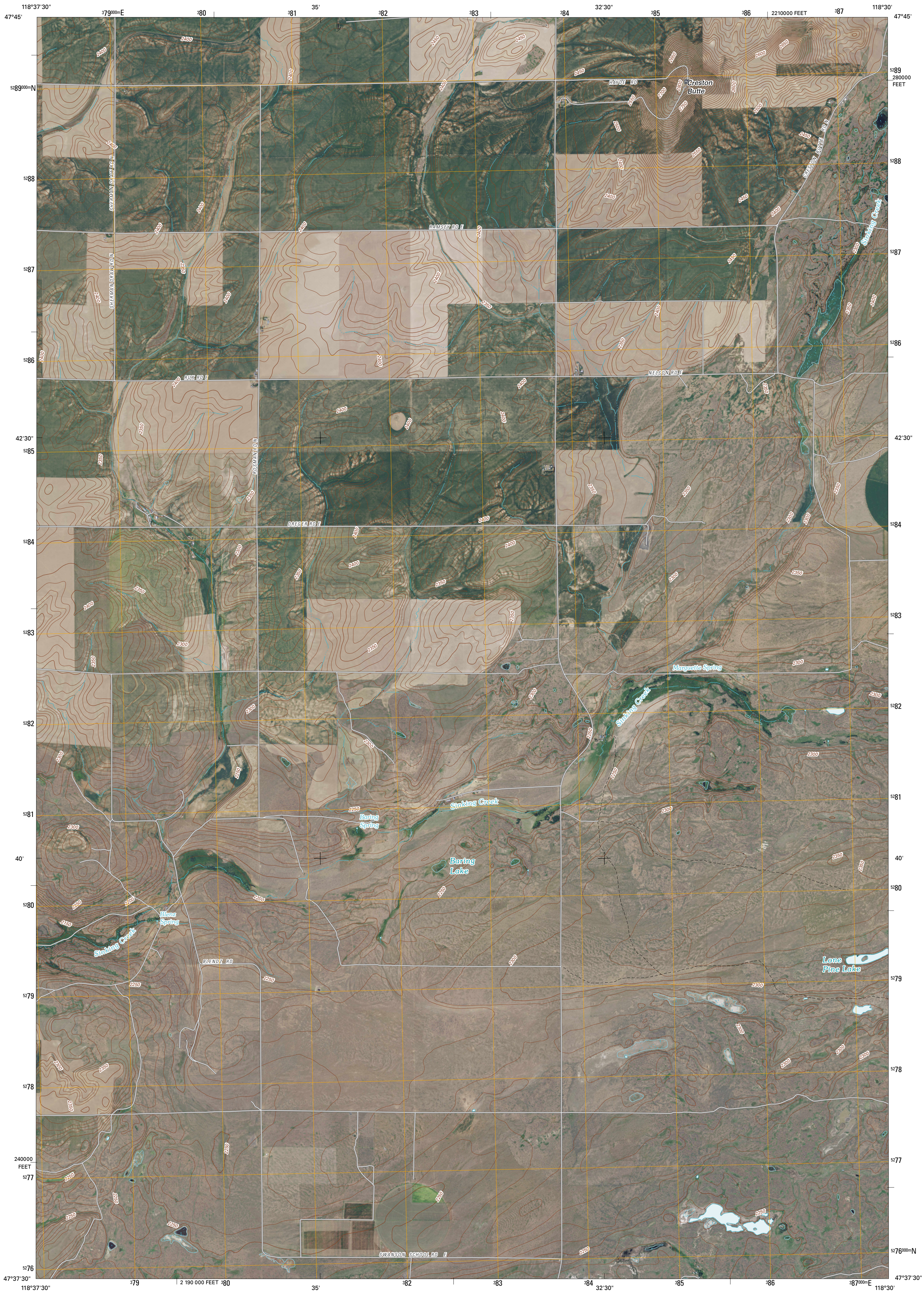




U.S. DEPARTMENT OF THE INTERIOR
U. S. GEOLOGICAL SURVEY

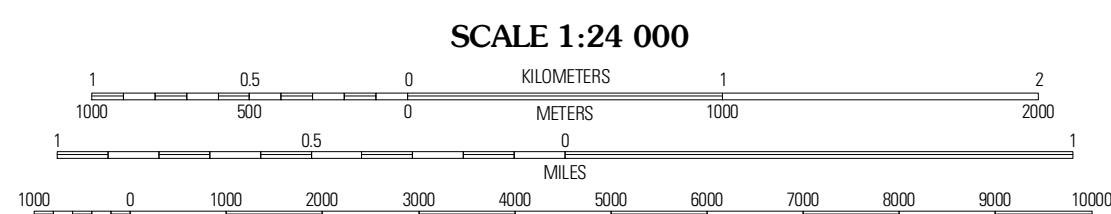
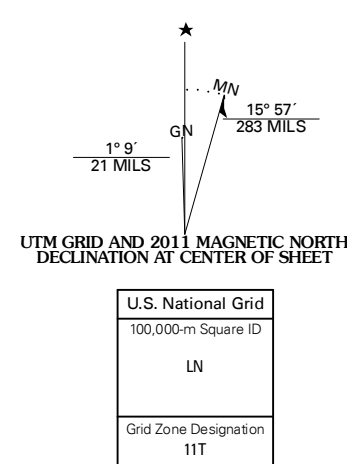


CRESTON BUTTE QUADRANGLE
WASHINGTON
7.5-MINUTE SERIES



Produced by the United States Geological Survey
North American Datum of 1983 (NAD83)
World Geodetic System of 1984 (WGS84). Projection and
1 000-meter grid. Universal Transverse Mercator, Zone 11T
10 000-foot ticks: Washington Coordinate System of 1983
(north zone)

Imagery.....NAIP, June 2009
Roads.....©2006-2010 Title Atlas
Names.....GNIS, 2009
Hydrography.....National Hydrography Dataset, 2009
Contours.....National Elevation Dataset, 2001



CONTOUR INTERVAL 10 FEET
NORTH AMERICAN VERTICAL DATUM OF 1988

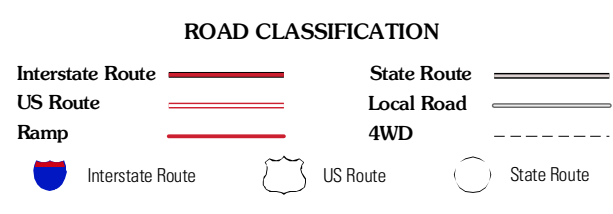
This map was produced to conform with version 0.5.10 of the
draft USGS Standards for 7.5-Minute Quadrangle Maps.
A metadata file associated with this product is draft version 0.5.11



QUADRANGLE LOCATION

Wilbur	Creston	Lincoln
Wagner Lake	Creston Butte	Telford
Draper Lake	Securon Lakes	Rocklyn SW

ADJOINING 7.5' QUADRANGLES



CRESTON BUTTE, WA
2011