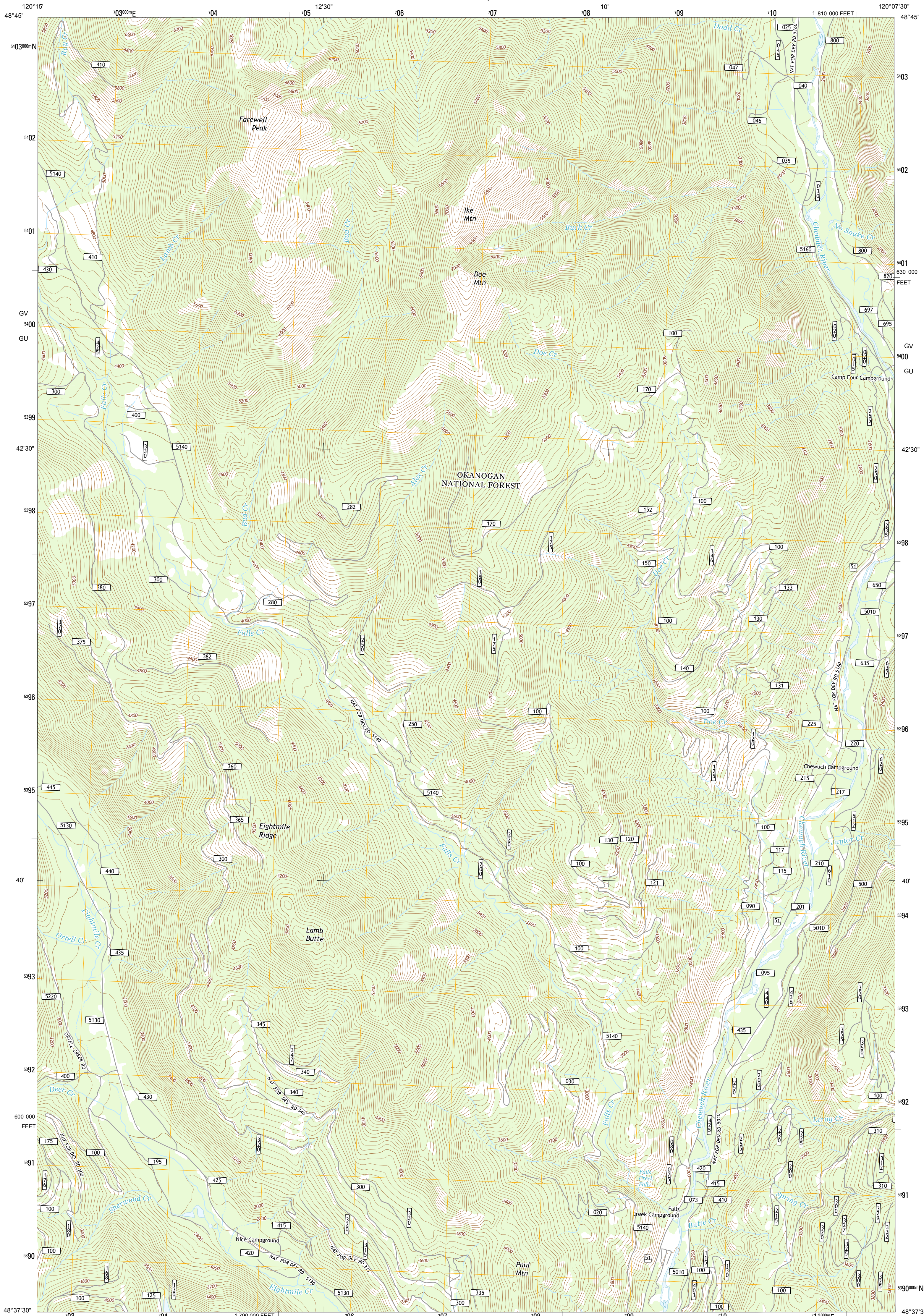




U.S. DEPARTMENT OF THE INTERIOR  
U. S. GEOLOGICAL SURVEY



DOE MOUNTAIN QUADRANGLE  
WASHINGTON-OKANOGAN CO.  
7.5-MINUTE SERIES



Produced by the United States Geological Survey  
North American Datum of 1983 (NAD83)  
World Geodetic System of 1984 (WGS84). Projection and  
1000-meter grid: Universal Transverse Mercator, Zone 10U  
10 000-foot ticks: Washington Coordinate System of 1983 (north zone)

This map is not a legal document. Boundaries may be  
generalized for this map scale. Private lands within government  
reservations may not be shown. Obtain permission before  
entering private lands.

Imagery: NIP, August 2011  
Roads: G2006-2013 TomTom  
Roads within US Forest Service Lands: FS Topo Data  
with limited Forest Service updates, 2013  
Names: GNS, 2013  
Hydrography: National Hydrography Dataset, 2011  
Contours: National Elevation Dataset, 1999  
Boundaries: Census, IBC, USGS, 1972-2012  
Public Land Survey System: BLM, 2011

