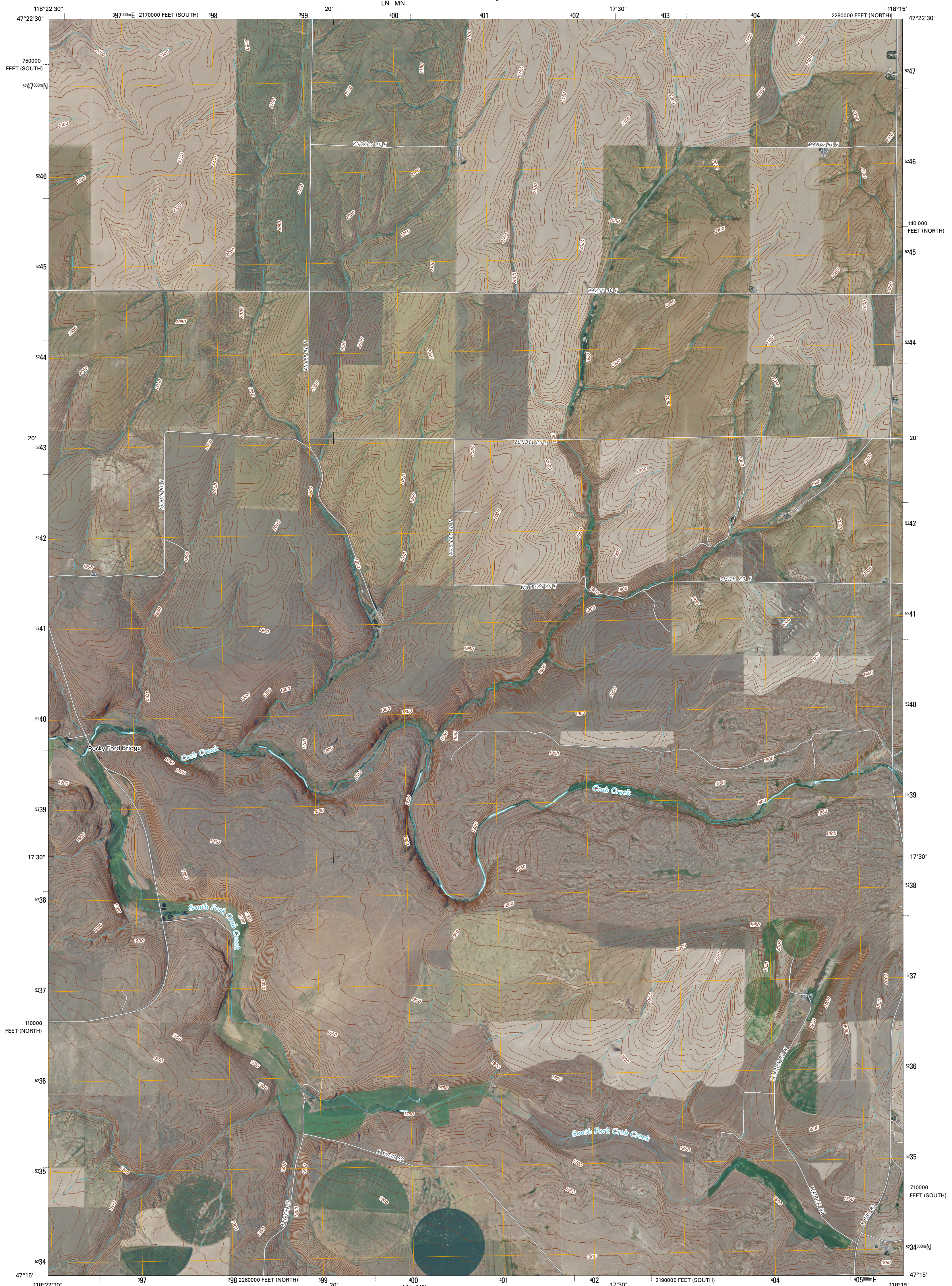




U.S. DEPARTMENT OF THE INTERIOR
U. S. GEOLOGICAL SURVEY



HARRINGTON SE QUADRANGLE
WASHINGTON
7.5-MINUTE SERIES

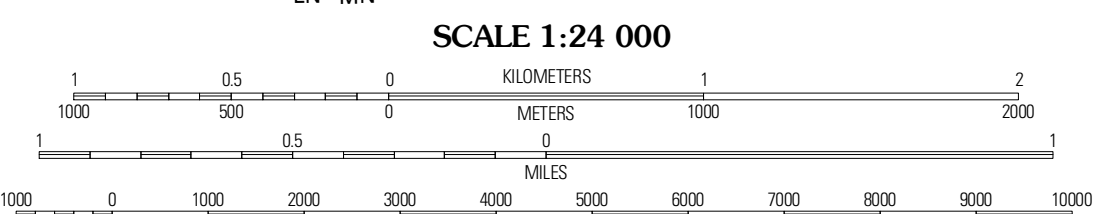


Produced by the United States Geological Survey
North American Datum of 1983 (NAD83)
World Geodetic System of 1984 (WGS84). Projection and
1 000-meter grid: Universal Transverse Mercator, Zone 11T
10 000-foot ticks: Washington Coordinate System of 1983
(north and south zones)

Imagery.....NAIP, June 2009
Roads.....62006-2010 Tole Atlas
Names.....GNIS, 2009
Hydrography.....National Hydrography Dataset, 2009
Contours.....National Elevation Dataset, 2001

UTM GRID AND 2011 MAGNETIC NORTH
DECLINATION AT CENTER OF SHEET

U.S. National Grid
100,000m Square ID
LN MN
150
Grid Zone Designation
11T



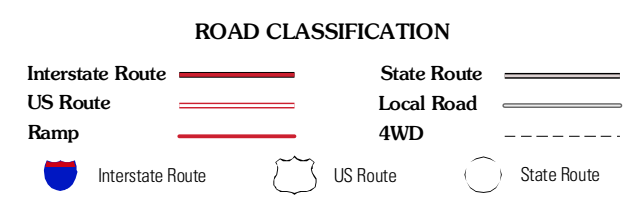
CONTOUR INTERVAL 10 FEET
NORTH AMERICAN VERTICAL DATUM OF 1988
This map was produced to conform with version 0.5.10 of the
draft USGS Standards for 7.5-Minute Quadrangle Maps.
A metadata file associated with this product is draft version 0.5.11



QUADRANGLE LOCATION

Cornelia Lake	Harrington	Lewis Valley
Lamona	Harrington SE	Sprague Lake SW
Ritzville NW	Ritzville NE	Karakul Hills

ADJOINING 7.5 QUADRANGLES



HARRINGTON SE, WA
2011