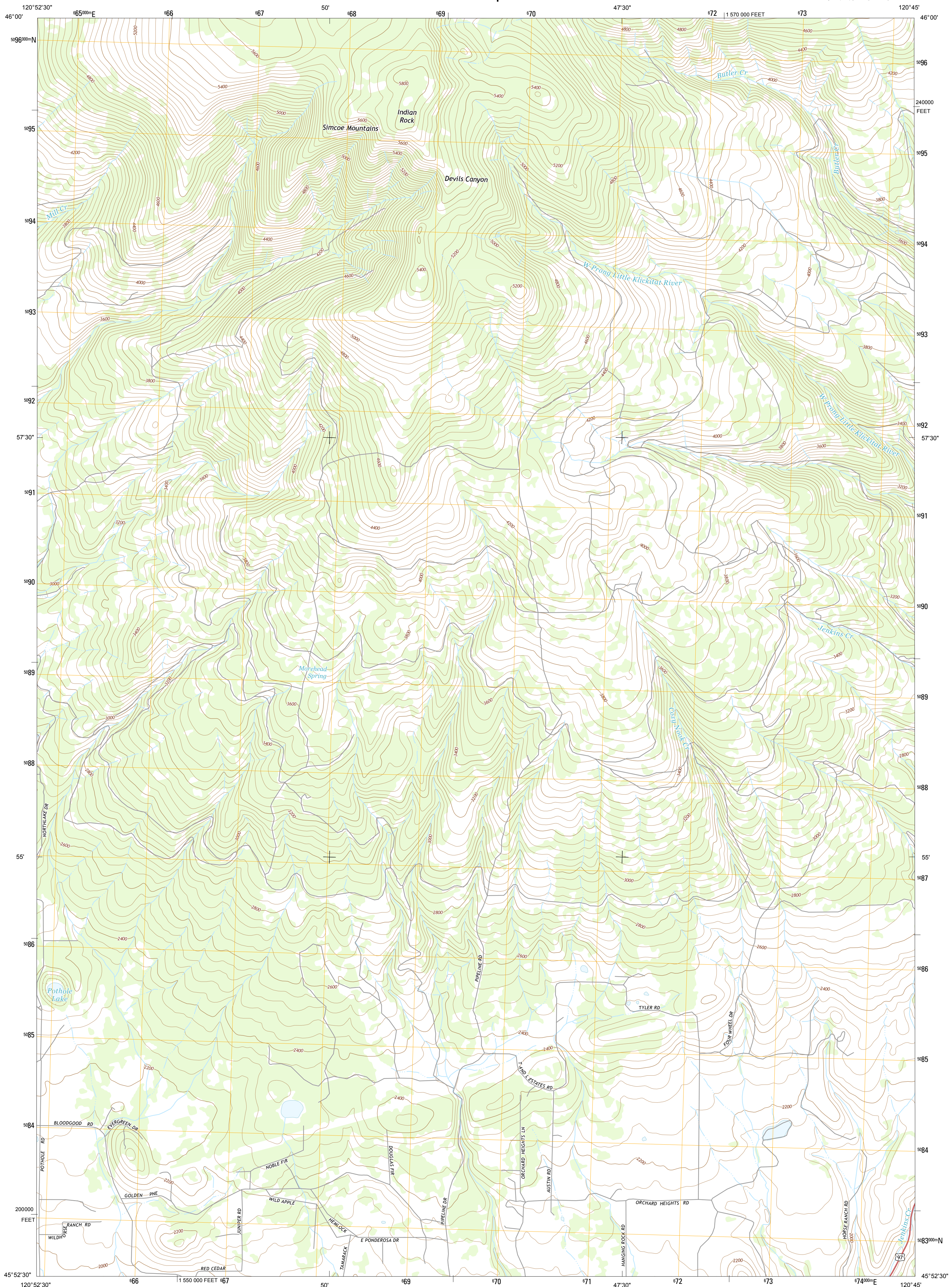




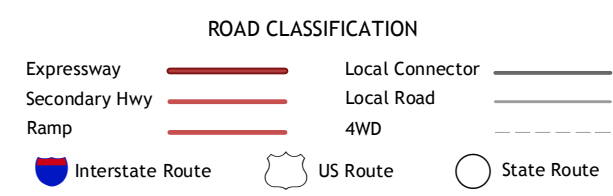
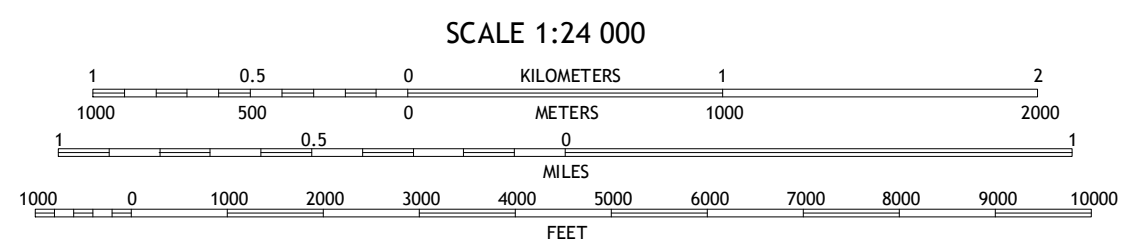
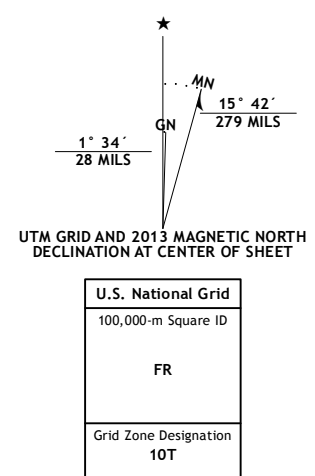
U.S. DEPARTMENT OF THE INTERIOR
U. S. GEOLOGICAL SURVEY



INDIAN ROCK QUADRANGLE
WASHINGTON-KLICKITAT CO.
7.5-MINUTE SERIES



Produced by the United States Geological Survey
North American Datum of 1983 (NAD83)
World Geodetic System of 1984 (WGS84). Projection and
1 000-meter grid: Universal Transverse Mercator, Zone 10T
10 000-foot ticks: Washington Coordinate System of 1983 (south
zone)
This map is not a legal document. Boundaries may be
generalized for this map scale. Private lands within government
reservations may not be shown. Obtain permission before
entering private lands.
Imagery: NADP, August 2011
Roads: 2006-2013 TomTom
Names: GNIS, 2013
Hydrography: National Hydrography Dataset, 2011
Contours: National Elevation Dataset, 2001
Boundaries: Census, IBWC, IBC, USGS, 1972 - 2012
Public Land Survey System: BLM, 2011



Hagerty Butte	Sagman Butte	Lugy Creek SW
White Pine Buttes	Indian Rock	Salt Pass
Centerville	Goldendale	Luna Butte

ADJOINING 7.5 QUADRANGLES

INDIAN ROCK, WA
2013

