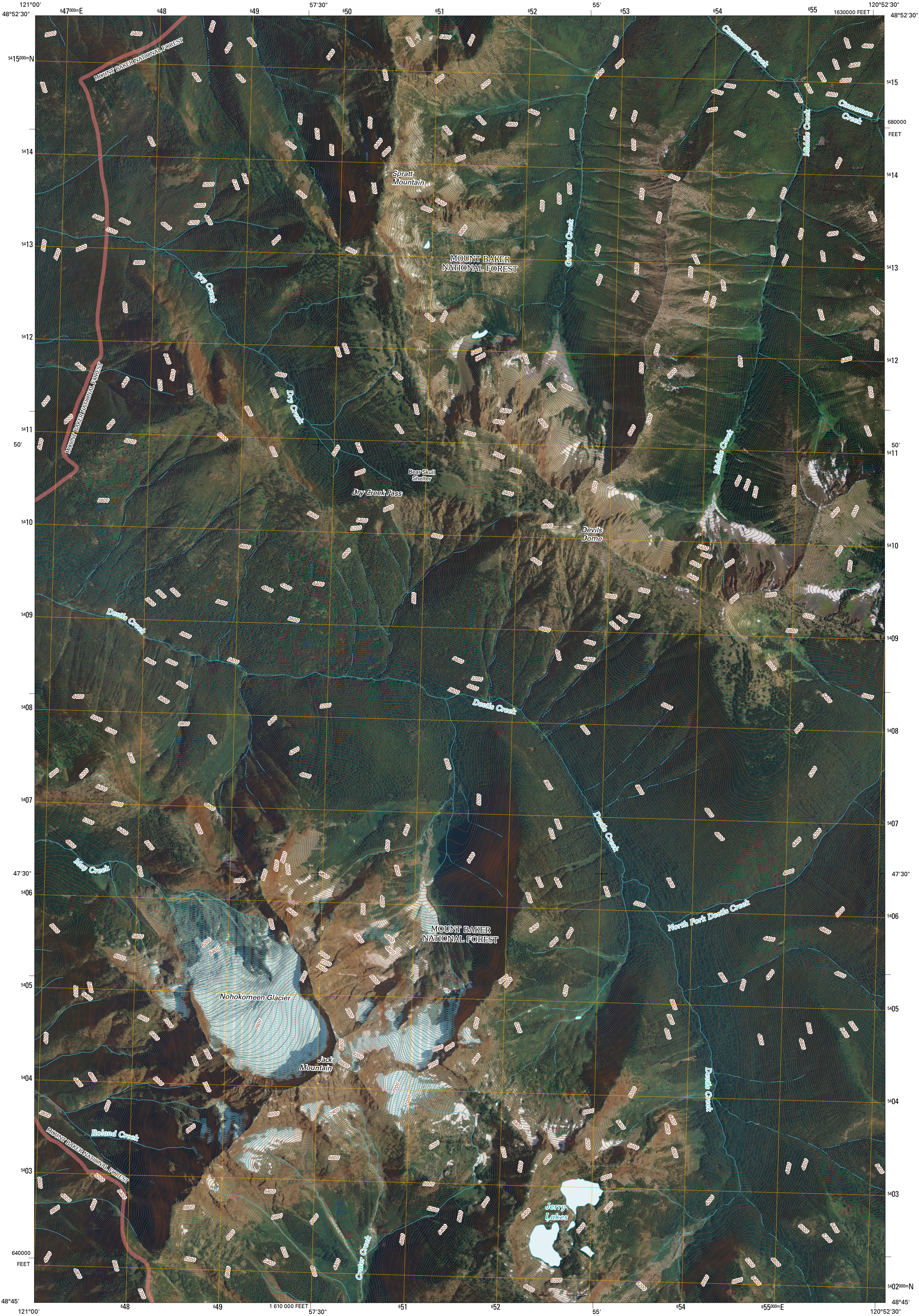




U.S. DEPARTMENT OF THE INTERIOR  
U. S. GEOLOGICAL SURVEY

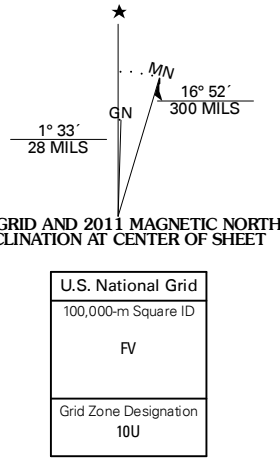


JACK MOUNTAIN QUADRANGLE  
WASHINGTON  
7.5-MINUTE SERIES

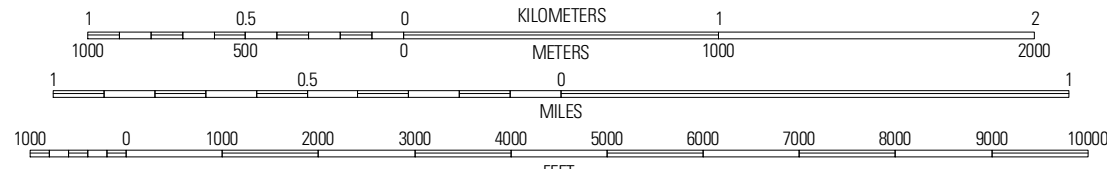


Produced by the United States Geological Survey  
North American Datum of 1983 (NAD83)  
World Geodetic System of 1984 (WGS84). Projection and  
1 000-meter grid: Universal Transverse Mercator, Zone 10U  
10 000-foot ticks: Washington Coordinate System of 1983  
(north zone)

Imagery.....NAIP, August 2009  
Roads.....©2006-2010 Tele Atlas  
Roads within US Forest Service Lands.....FS Topo Data  
with limited Forest Service updates, 2009  
Names.....National Hydrography Dataset, 2009  
Hydrography.....National Hydrography Dataset, 2009  
Contours.....National Elevation Dataset, 1999



SCALE 1:24 000



CONTOUR INTERVAL 40 FEET  
NORTH AMERICAN VERTICAL DATUM OF 1988

This map was produced to conform with version 0.5.10 of the  
draft USGS Standards for 7.5-Minute Quadrangle Maps.  
A metadata file associated with this product is draft version 0.5.13



QUADRANGLE LOCATION		
Hozomeen Mountain	Slight Peak	Castle Peak
Pumpkin Mountain	Jack Mountain	Shull Mountain
Ross Dam	Crater Mountain	Azurite Peak

ROAD CLASSIFICATION

Interstate Route	State Route
US Route	Local Road
Ramp	4WD

Interstate Route US Route State Route  
FS Primary Route FS Passenger Route FS High Clearance Route

Check with local Forest Service unit  
for current travel conditions and restrictions.

JACK MOUNTAIN, WA  
2011