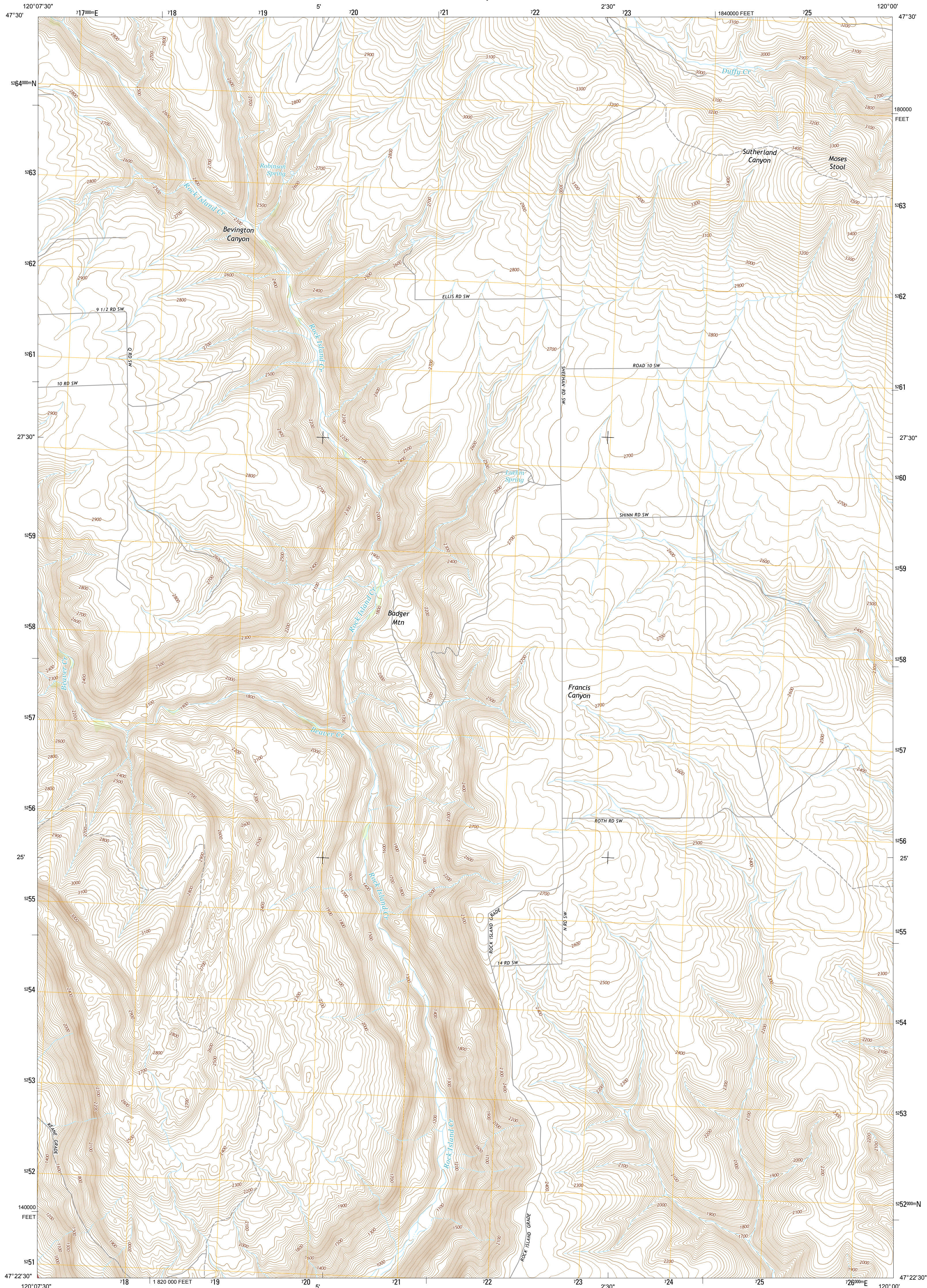




U.S. DEPARTMENT OF THE INTERIOR  
U. S. GEOLOGICAL SURVEY



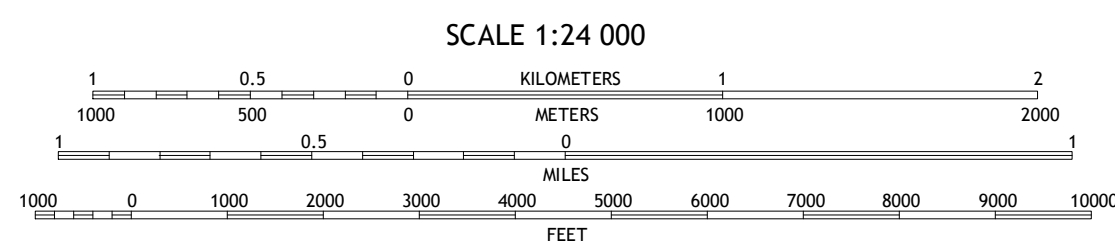
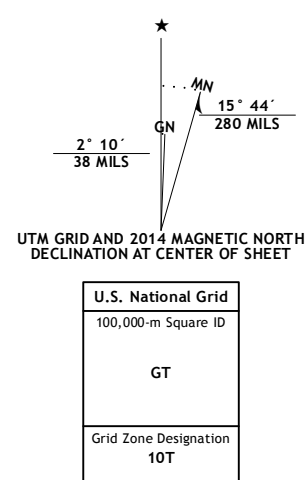
MALAGA NE QUADRANGLE  
WASHINGTON-DOUGLAS CO.  
7.5-MINUTE SERIES



Produced by the United States Geological Survey  
North American Datum of 1983 (NAD83)  
World Geodetic System of 1984 (WGS84). Projection and  
1 000-meter grid: Universal Transverse Mercator, Zone 10T  
10 000-foot ticks: Washington Coordinate System of 1983 (north  
zone)

This map is not a legal document. Boundaries may be  
generalized for this map scale. Private lands within government  
reservations may not be shown. Obtain permission before  
entering private lands.

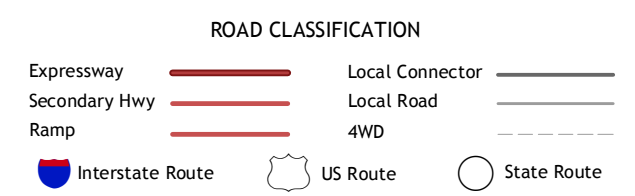
Imagery.....NAIP, July 2011  
Roads.....©2006-2013 TomTom  
Names.....GNIS, 2013  
Hydrography.....National Hydrography Dataset, 2011  
Contours.....National Elevation Dataset, 2002  
Boundaries.....Census, IBWC, IBC, USGS, 1972-2012  
Public Land Survey System.....BLM, 2011



QUADRANGLE LOCATION

Orondo	Douglas	Alstown
Rock Island	Malaga NE	Pittsades
Malaga	Rock Island Dam	Appledeate

ADJOINING 7.5 QUADRANGLES



MALAGA NE, WA  
2014

