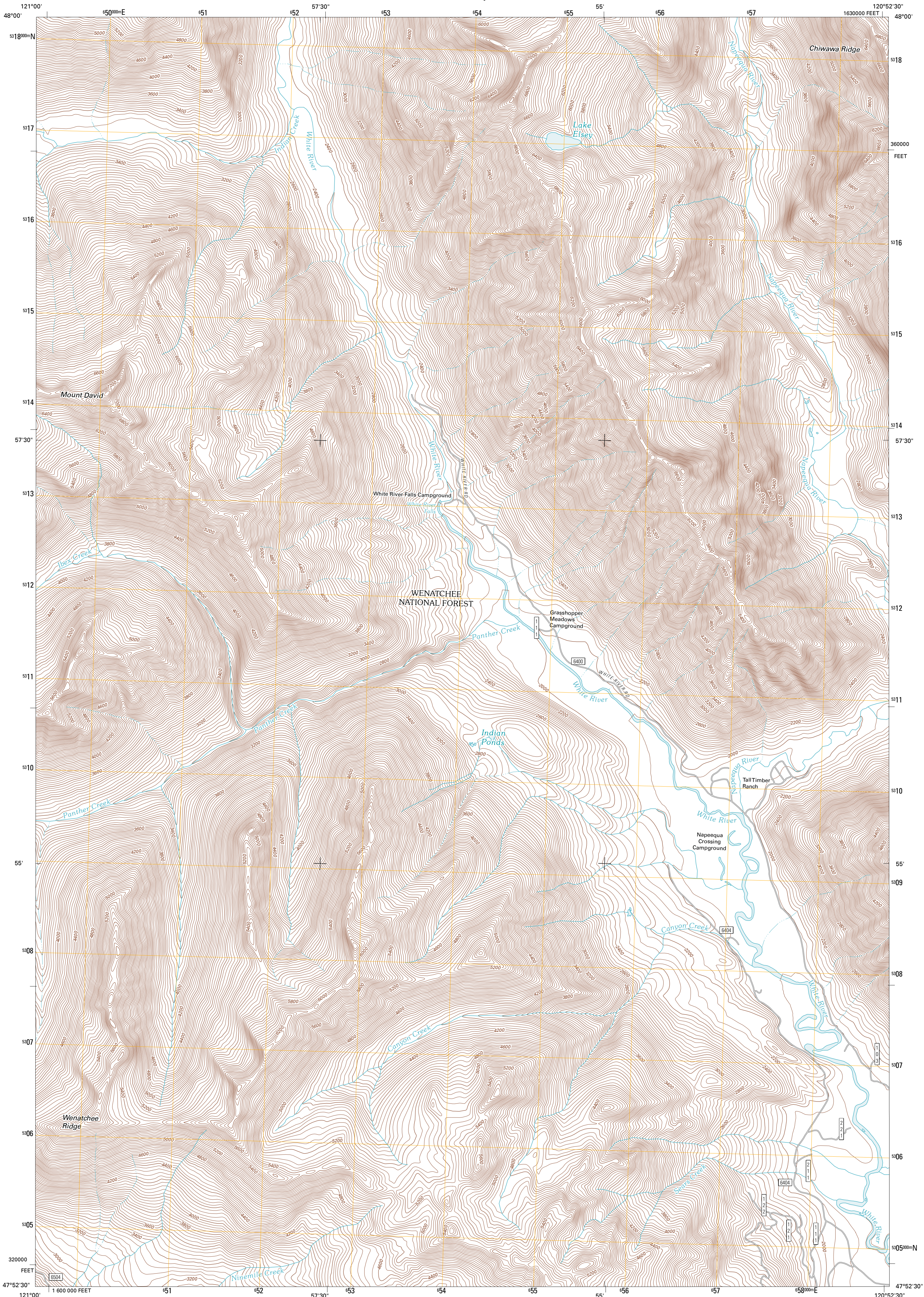




U.S. DEPARTMENT OF THE INTERIOR
U. S. GEOLOGICAL SURVEY

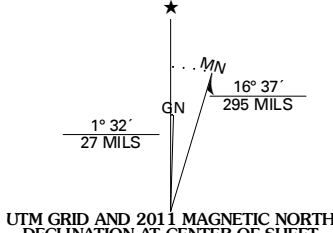


MOUNT DAVID QUADRANGLE
WASHINGTON
7.5-MINUTE SERIES

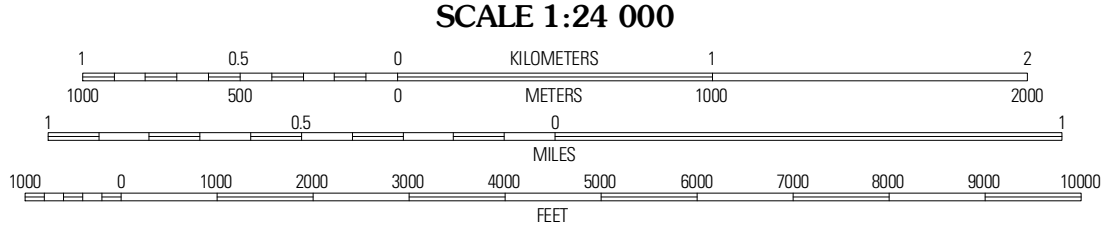


Produced by the United States Geological Survey
North American Datum of 1983 (NAD83)
World Geodetic System of 1984 (WGS84). Projection and
1 000-meter grid: Universal Transverse Mercator, Zone 10T
10 000-foot ticks: Washington Coordinate System of 1983
(north zone)

Imagery.....N.A.P., July 2009
Roads.....2006-2010 Tele Atlas
Roads within US Forest Service Lands.....FSTopo Data
with limited Forest Service updates, 2009
Names.....GNIS, 2010
Hydrography.....National Hydrography Dataset, 2009
Contours.....National Elevation Dataset, 1999



U.S. National Grid
600,000m Square ID
FU
Grid Zone Designation
10T



CONTOUR INTERVAL 40 FEET
NORTH AMERICAN VERTICAL DATUM OF 1988
This map was produced to conform with version 0.5.10 of the
draft USGS Standards for 7.5-Minute Quadrangle Maps.
A metadata file associated with this product is draft version 0.5.12



Glacier Peak East	Clark Mountain	Trinity
Pue Mountain	Mount David	Schaefer Lake
Labyrinth Mountain	Mount Howard	Lake Wenatchee

ADJOINING 7.5 QUADRANGLES

ROAD CLASSIFICATION

Interstate Route	State Route
US Route	Local Road
Ramp	4WD

Legend for road types: Interstate Route (thick red line), US Route (thin red line), Ramp (blue line), State Route (thin black line), Local Road (dashed black line), 4WD (dashed black line with cross-ticks), FS Primary Route (thick black line), US Route (thin black line), FS Passenger Route (thin black line), State Route (thin black line), FS High Clearance Route (thick black line with cross-ticks).

Check with local Forest Service unit for current travel conditions and restrictions.

MOUNT DAVID, WA
2011