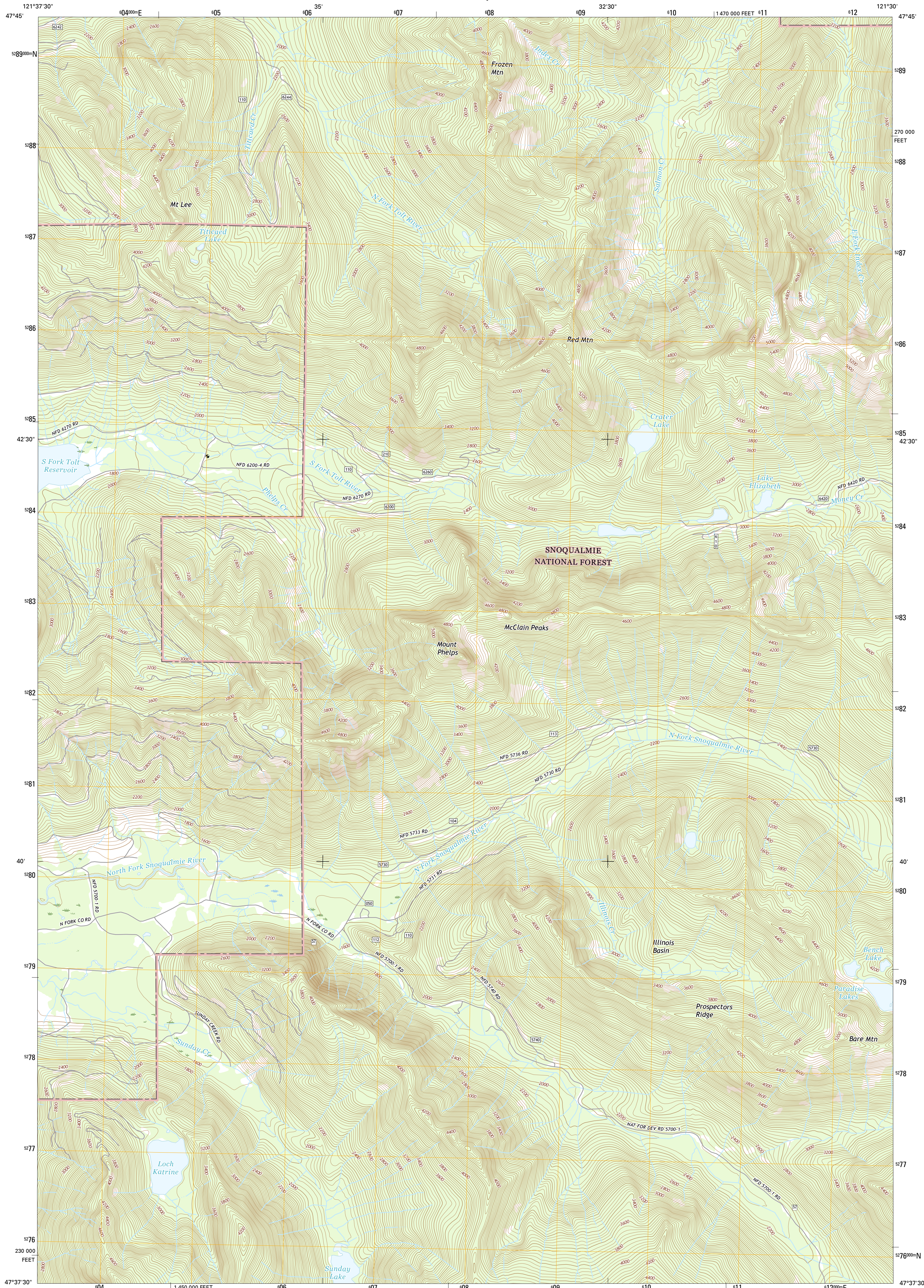




U.S. DEPARTMENT OF THE INTERIOR  
U.S. GEOLOGICAL SURVEY



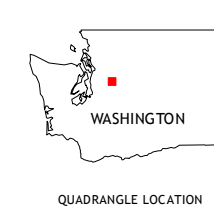
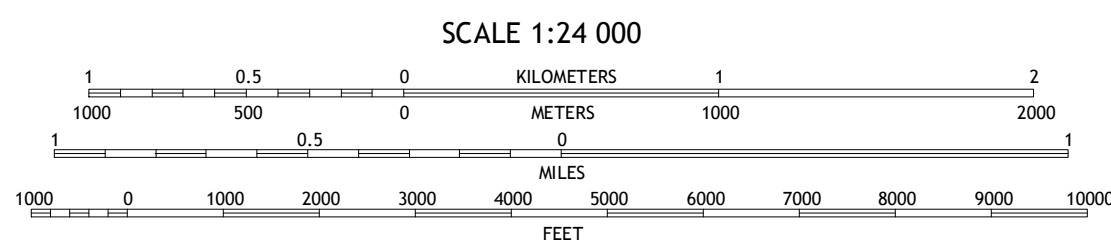
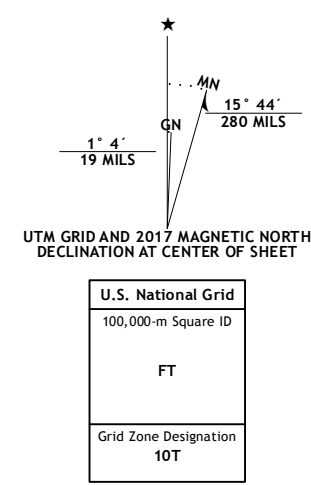
MOUNT PHELPS QUADRANGLE  
WASHINGTON-KING CO.  
7.5-MINUTE SERIES



**Produced by the United States Geological Survey**  
North American Datum of 1983 (NAD83)  
World Geodetic System of 1984 (WGS84), Projection and  
1 000-meter grid: Universal Transverse Mercator, Zone 10T  
10 000-foot ticks: Washington Coordinate System of 1983 (north  
zone)

This map is not a legal document. Boundaries may be  
generalized for this map scale. Private lands within government  
reservations may not be shown. Obtain permission before  
entering private lands.

Imagery	.....	NAIP, November 2015
Roads	.....	U.S. Census Bureau, 2015 - 2016
Roads within US Forest Service Lands	.....	FS Topo Data with limited Forest Service updates, 2012 - 2016
Names	.....	GNIS, 2016
Hydrography	.....	National Hydrography Dataset, 2015
Contours	.....	National Elevation Dataset, 1999
Boundaries	.....	Multiple sources; see metadata file 1972 - 2016
Public Land Survey System	.....	BLM, 2016
Wetlands	.....	FWS National Wetlands Inventory 1977 - 2014



**ROAD CLASSIFICATION**

Expressway	———	Local Connector	———
Secondary Hwy	———	Local Road	———
Ramp	———	4WD	———
Interstate Route	———	US Route	○
FS Primary Route	○	FS Passenger Route	○
		FS High Clearance Route	○

Check with local Forest Service unit  
for current travel conditions and restrictions.

**ADJOINING QUADRANGLES**

1	2	3
4	5	6
7	8	9

1 Gold Bar  
2 Index  
3 Baring  
4 Devils Slide  
5 Grotto  
6 Mount Si  
7 Lake Philippi  
8 Snoqualmie Lake

**MOUNT PHELPS, WA**  
2017

