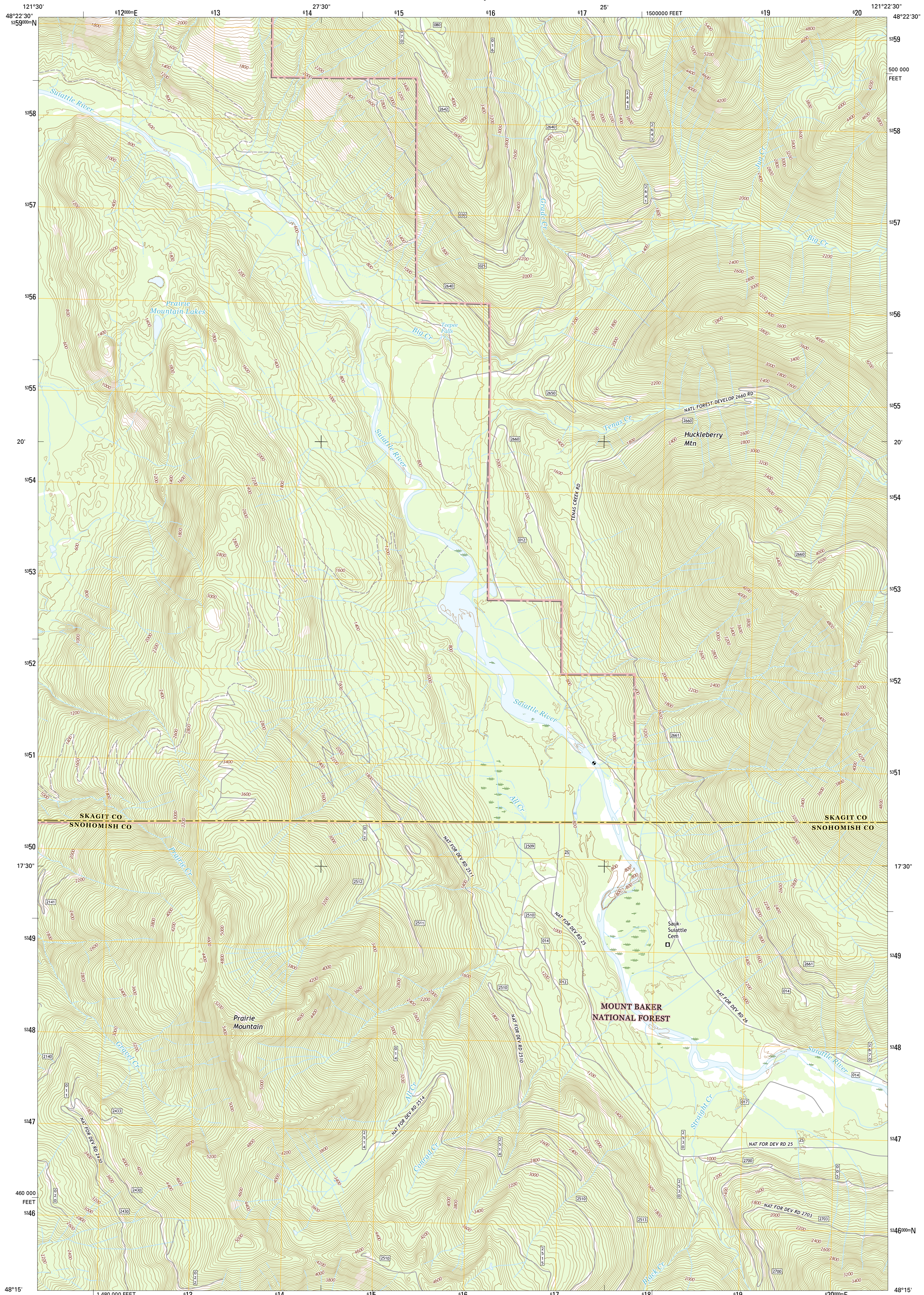




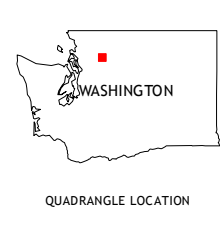
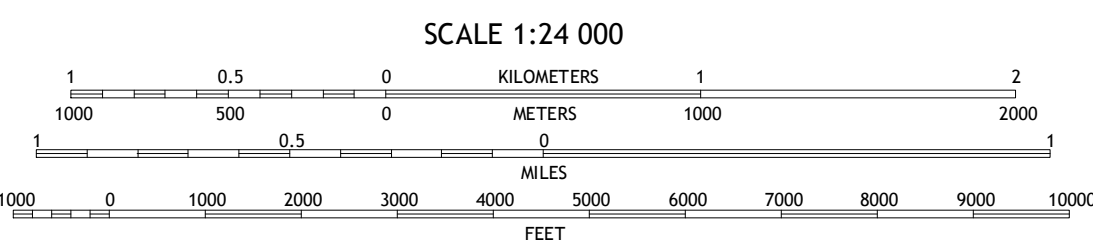
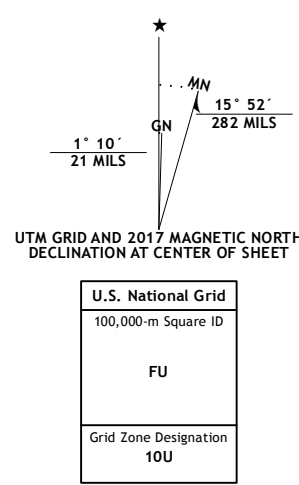
U.S. DEPARTMENT OF THE INTERIOR
U.S. GEOLOGICAL SURVEY



PRAIRIE MOUNTAIN QUADRANGLE
WASHINGTON
7.5-MINUTE SERIES



Produced by the United States Geological Survey
North American Datum of 1983 (NAD83)
World Geodetic System of 1984 (WGS84). Projection and
1 000-meter grid: Universal Transverse Mercator, Zone 10U
10 000-foot ticks: Washington Coordinate System of 1983 (north
zone)
This map is not a legal document. Boundaries may be
generalized for this map scale. Private lands within government
reservations may not be shown. Obtain permission before
entering private lands.
Imagery.....N.A.I.P., November 2015
Roads.....U.S. Census Bureau, 2015 - 2016
Roads within US Forest Service Lands.....FS Topo Data
with limited Forest Service updates, 2012 - 2016
Names.....G.N.S., 2016
Hydrography.....National Hydrography Dataset, 2015
Contours.....National Elevation Dataset, 2016
Boundaries.....Multiple sources; see metadata file 1972 - 2016
Public Land Survey System.....BLM, 2016
Wetlands.....FWS National Wetlands Inventory 1977 - 2014



ROAD CLASSIFICATION

| | | |
|------------------|--------------------|-------------------------|
| Expressway | Local Connector | State Route |
| Secondary Hwy | Local Road | FS High Clearance Route |
| Ramp | 4WD | |
| Interstate Route | US Route | |
| FS Primary Route | FS Passenger Route | |

Check with local Forest Service unit for current travel conditions and restrictions.

| | | |
|---|---|---|
| 1 | 2 | 3 |
| 4 | 5 | 6 |
| 7 | 8 | |

ADJOINING QUADRANGLES

- 1 Rockport
- 2 Ilabot Peaks
- 3 Snowking Mountain
- 4 Darrington
- 5 Huckleberry Mountain
- 6 Helena Ridge
- 7 White Chuck Mountain
- 8 Mount Pugh

PRAIRIE MOUNTAIN, WA
2017

