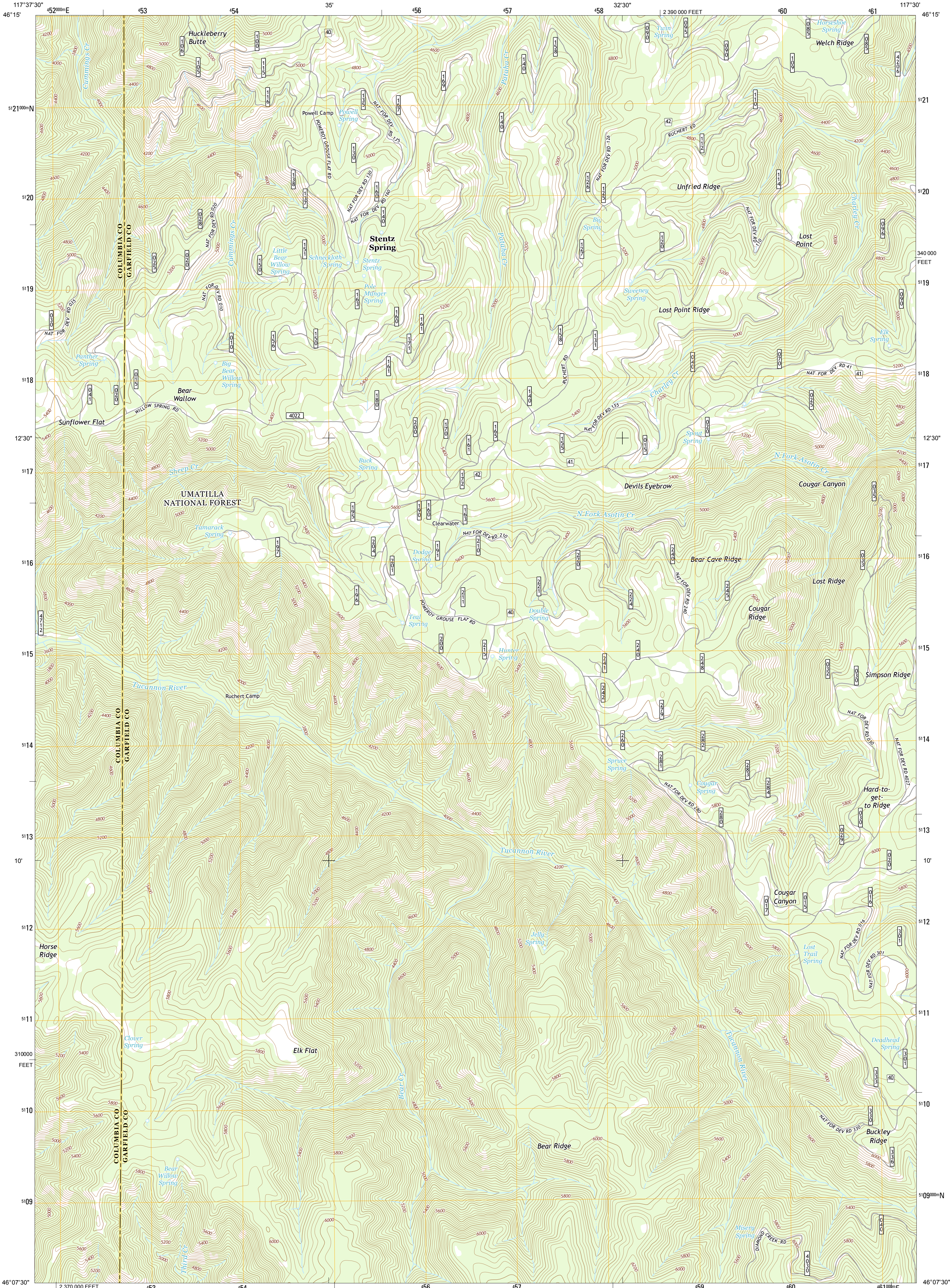




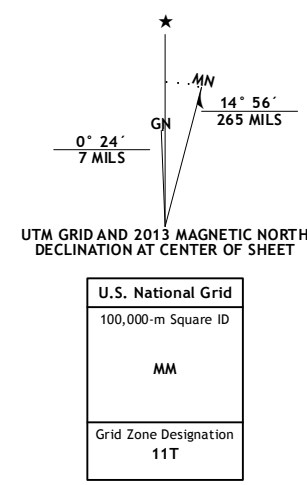
U.S. DEPARTMENT OF THE INTERIOR  
U. S. GEOLOGICAL SURVEY



STENTZ SPRING QUADRANGLE  
WASHINGTON  
7.5-MINUTE SERIES



**Produced by the United States Geological Survey**  
North American Datum of 1983 (NAD83)  
World Geodetic System of 1984 (WGS84). Projection and  
1 000-meter grid: Universal Transverse Mercator, Zone 11T  
10 000-foot ticks: Washington Coordinate System of 1983 (south  
zone)  
This map is not a legal document. Boundaries may be  
generalized for this map scale. Private lands within government  
reservations may not be shown. Obtain permission before  
entering private lands.  
Imagery: .....NAIP, August 2011  
Roads: .....©2006-2013, TomTom  
Roads within US Forest Service Lands: .....FS Topo Data  
with limited Forest Service updates, 2013  
Names: .....GNIS, 2013  
Hydrography: .....National Hydrography Dataset, 2011  
Contours: .....National Elevation Dataset, 2000  
Boundaries: .....Census, BWC, IBC, USGS, 1972 - 2012  
Public Land Survey System: .....BLM, 2011



SCALE 1:24 000

CONTOUR INTERVAL 40 FEET  
NORTH AMERICAN VERTICAL DATUM OF 1988

This map was produced to conform with the  
National Geospatial Program US Topo Product Standard, 2011.  
A metadata file associated with this product is draft version 0.6.15



QUADRANGLE LOCATION

Hopkins Ridge	Rose Springs	Peola
Panjab Creek	Stentz Spring	Pinkham Butte
Oregon Butte	Diamond Peak	Saddle Butte

ADJOINING 7.5 QUADRANGLES

**ROAD CLASSIFICATION**

Expressway	Local Connector	
Secondary Hwy	Local Road	
Ramp	4WD	
Interstate Route	US Route	State Route
FS Primary Route	FS Passenger Route	FS High Clearance Route

Check with local Forest Service unit for current travel conditions and restrictions.

STENTZ SPRING, WA  
2013

