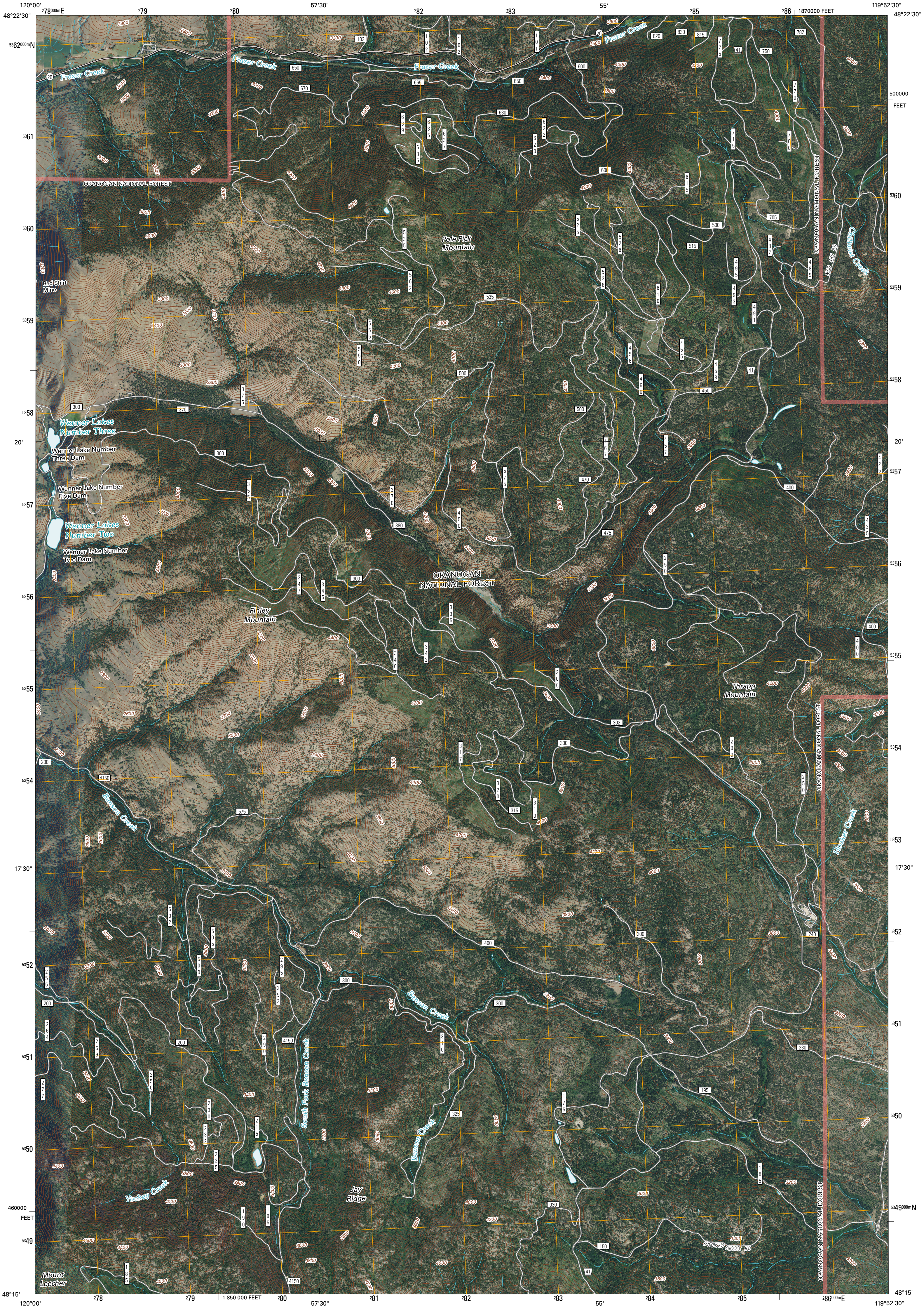




U.S. DEPARTMENT OF THE INTERIOR
U. S. GEOLOGICAL SURVEY



THRAPP MOUNTAIN QUADRANGLE
WASHINGTON
7.5-MINUTE SERIES

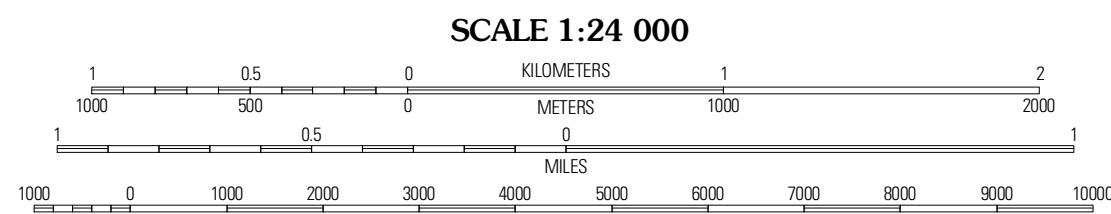


Produced by the United States Geological Survey
North American Datum of 1983 (NAD83)
World Geodetic System of 1984 (WGS84). Projection and
1 000-meter grid: Universal Transverse Mercator, Zone 11U
10 000-foot ticks: Washington Coordinate System of 1983
(north zone)

Imagery.....NAIP, June 2009
Roads.....2006-2010 Tele Atlas
Roads within US Forest Service Lands
with limited Forest Service updates, 2009
Names.....GNIS, 2009
Hydrography.....National Hydrography Dataset, 2009
Contours.....National Elevation Dataset, 1999

UTM GRID AND 2011 MAGNETIC NORTH
DECLINATION AT CENTER OF SHEET

U.S. National Grid 100,000-m Square Grid
11U
Grid Zone Designation 11U



CONTOUR INTERVAL 40 FEET
NORTH AMERICAN VERTICAL DATUM OF 1988
This map was produced to conform with version 0.5.10 of the
draft USGS Standards for 7.5-Minute Quadrangle Maps.
A metadata file associated with this product is draft version 0.5.13



QUADRANGLE LOCATION		
Blue Back Mountain	Loop Loop Summit	Buck Mountain
Tatop East	Thrapp Mountain	Chilbut Valley
Methow	Woodson Knob	Rat Lake

ADJOINING 7.5' QUADRANGLES

ROAD CLASSIFICATION	
Interstate Route	State Route
US Route	Local Road
Ramp	4WD
FS Primary Route	FS Passenger Route
FS High Clearance Route	

Check with local Forest Service unit for current travel conditions and restrictions.

THRAPP MOUNTAIN, WA
2011