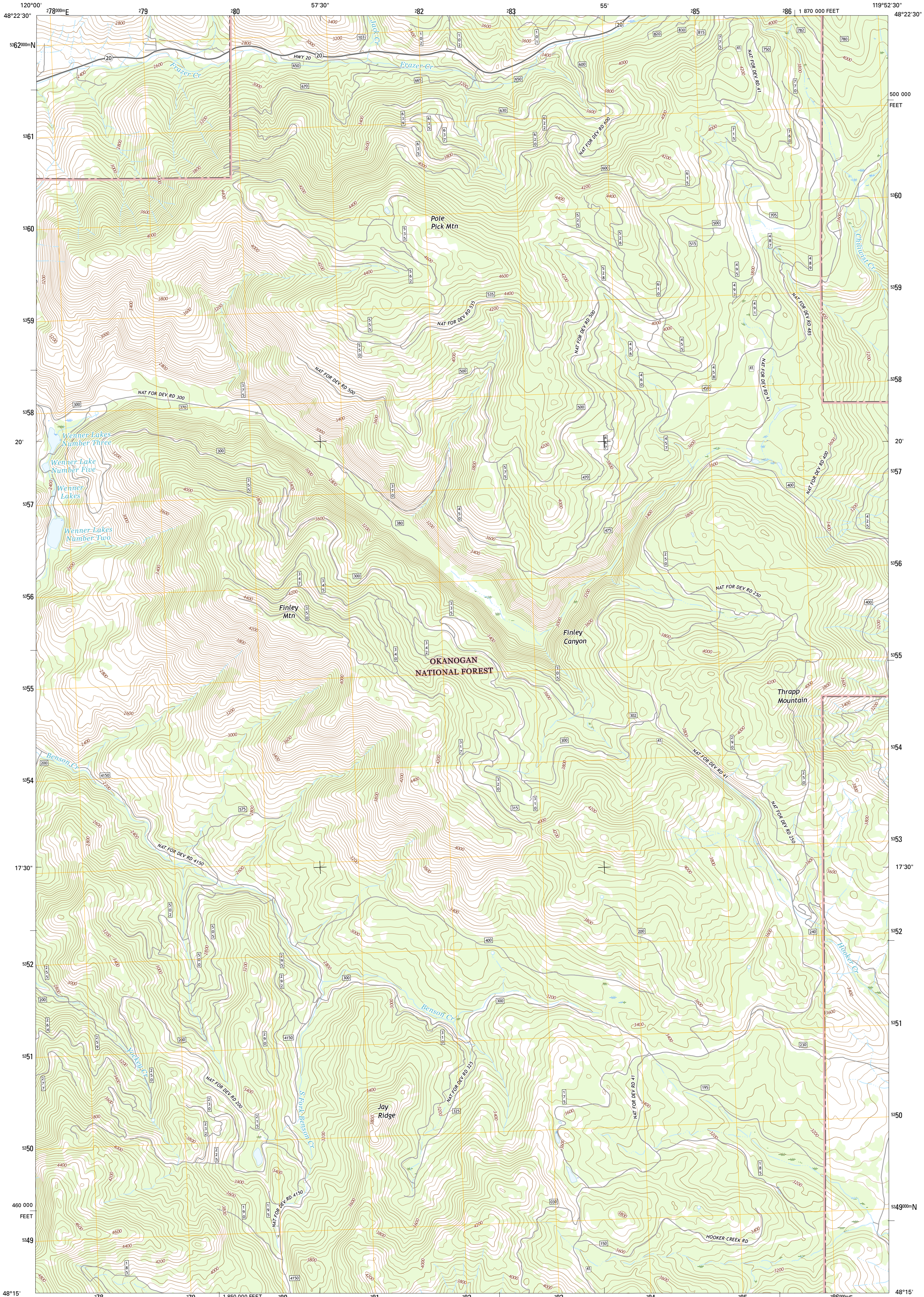




U.S. DEPARTMENT OF THE INTERIOR
U.S. GEOLOGICAL SURVEY



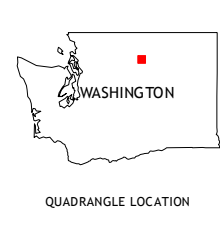
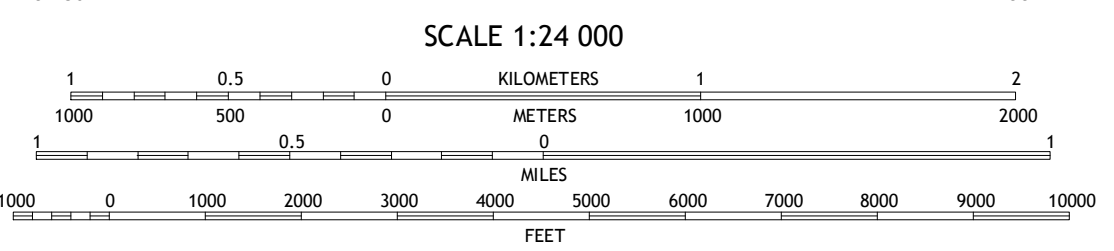
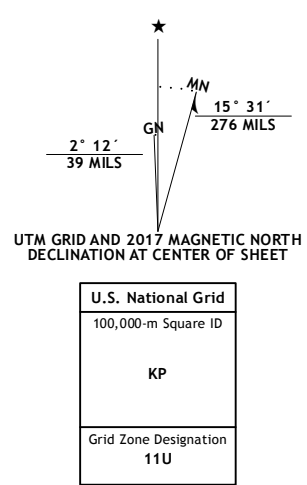
THRAPP MOUNTAIN QUADRANGLE
WASHINGTON-OKANOGAN CO.
7.5-MINUTE SERIES



Produced by the United States Geological Survey
North American Datum of 1983 (NAD83)
World Geodetic System of 1984 (WGS84). Projection and
1 000-meter grid: Universal Transverse Mercator, Zone 11U
10 000-foot ticks: Washington Coordinate System of 1983 (north zone)

This map is not a legal document. Boundaries may be generalized for this map scale. Private lands within government reservations may not be shown. Obtain permission before entering private lands.

Imagery.....NAIP, January 2016
Roads.....U.S. Census Bureau, 2015 - 2016
Roads within US Forest Service Lands.....FS Topo Data with limited Forest Service updates, 2012 - 2016
Names.....GNIS, 2016
Hydrography.....National Hydrography Dataset, 2016
Contours.....National Elevation Dataset, 1999
Boundaries.....Multiple sources; see metadata file 1972 - 2016
Public Land Survey System.....BLM, 2016
Wetlands.....FWS National Wetlands Inventory 1977 - 2016



ROAD CLASSIFICATION

Expressway	Local Connector	Local Road
Secondary Hwy	4WD	FS High Clearance Route
Ramp	US Route	FS Passenger Route
Interstate Route	State Route	
FS Primary Route		

Check with local Forest Service unit for current travel conditions and restrictions.

CONTOUR INTERVAL 40 FEET
NORTH AMERICAN VERTICAL DATUM OF 1988

This map was produced to conform with the National Geospatial Program US Topo Product Standard, 2011. A metadata file associated with this product is draft version 0.6.19

1	2	3
4	5	6
7	8	

ADJOINING QUADRANGLES

- Blue Buck Mountain
- Loup Loup Summit
- Buck Mountain
- Twisp East
- Chilwist Valley
- Methow
- Knowlton Knob
- Rat Lake

THRAPP MOUNTAIN, WA
2017

