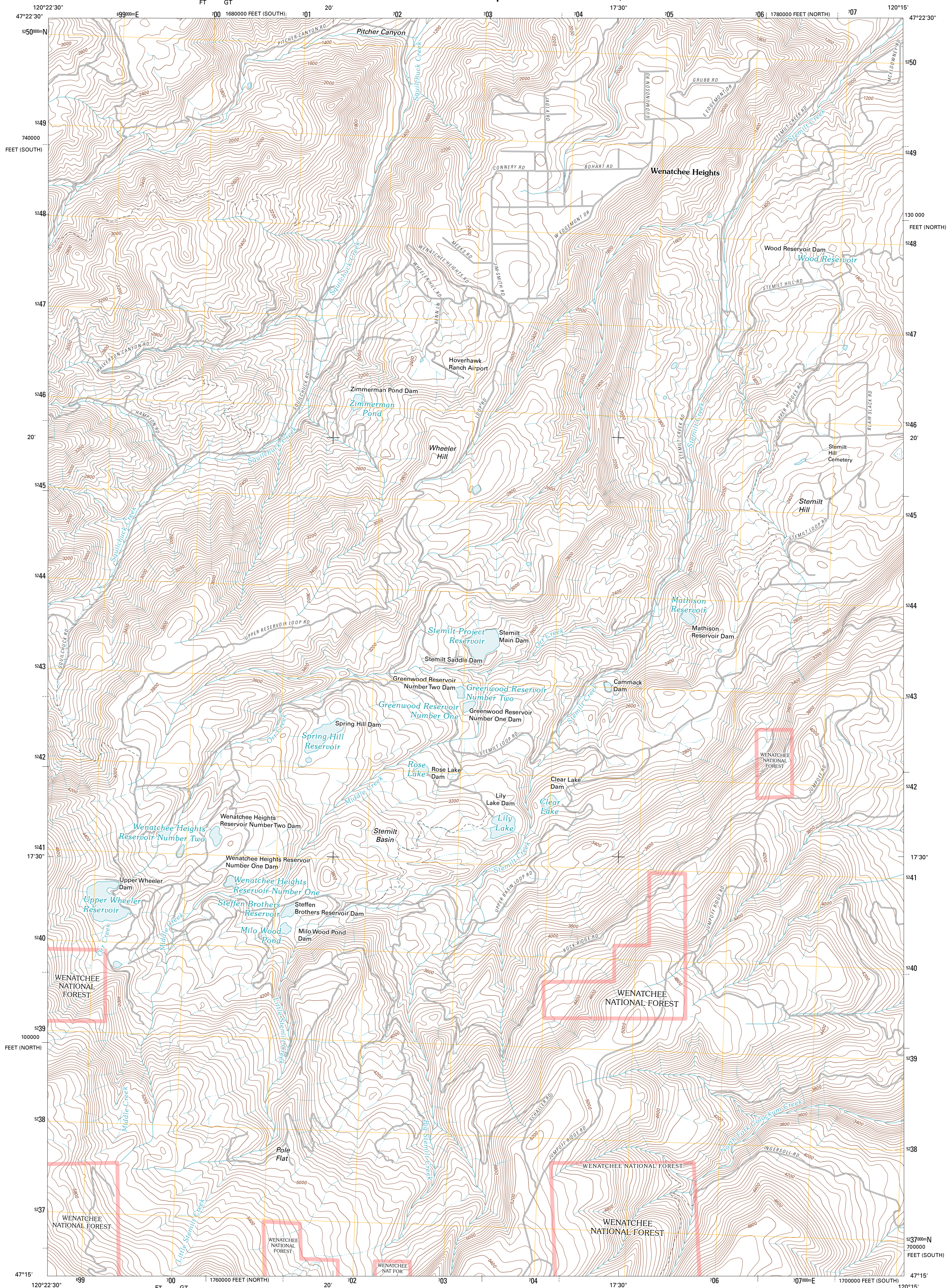




U.S. DEPARTMENT OF THE INTERIOR
U. S. GEOLOGICAL SURVEY

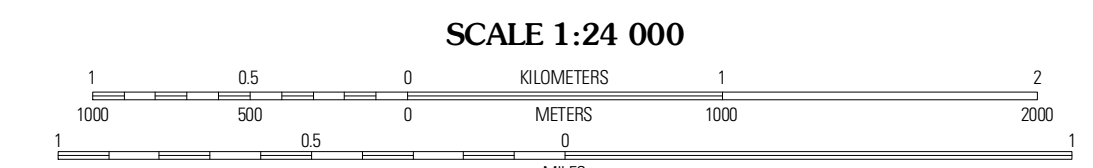
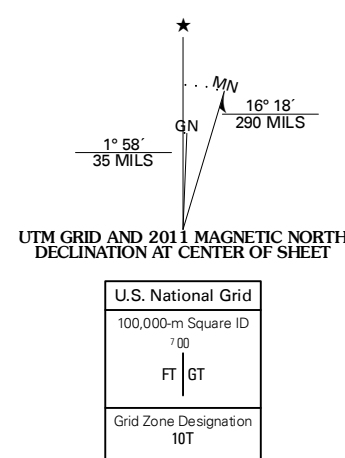


WENATCHEE HEIGHTS QUADRANGLE
WASHINGTON
7.5-MINUTE SERIES



Produced by the United States Geological Survey
North American Datum of 1983 (NAD83)
World Geodetic System of 1984 (WGS84). Projection and
1 000-meter grid: Universal Transverse Mercator, Zone 10T
10 000-foot ticks: Washington Coordinate System of 1983
(north and south zones)

Imagery.....NIP, July 2009
Roads.....©2006-2010 Tele Atlas
Roads within US Forest Service Lands.....FSTopo Data
with limited Forest Service updates, 2009
Names.....GNIS, 2010
Hydrography.....National Hydrography Dataset, 2009
Contours.....National Elevation Dataset, 1999



CONTOUR INTERVAL 40 FEET
NORTH AMERICAN VERTICAL DATUM OF 1988
This map was produced to conform with version 0.5.10 of the
draft USGS Standards for 7.5-Minute Quadrangle Maps.
A metadata file associated with this product is draft version 0.5.12



QUADRANGLE LOCATION

Monitor	Wenatchee	Rock Island
Mission Peak	Wenatchee Heights	Mulaga
Nanum Canyon	Colchuck Pass	Stray Gulch

ADJOINING 7.5' QUADRANGLES

ROAD CLASSIFICATION

Interstate Route	State Route
US Route	Local Road
Ramp	4WD
Interstate Route	US Route
FS Primary Route	FS Passenger Route
	FS High Clearance Route

Check with local Forest Service unit for current travel conditions and restrictions.

WENATCHEE HEIGHTS, WA
2011