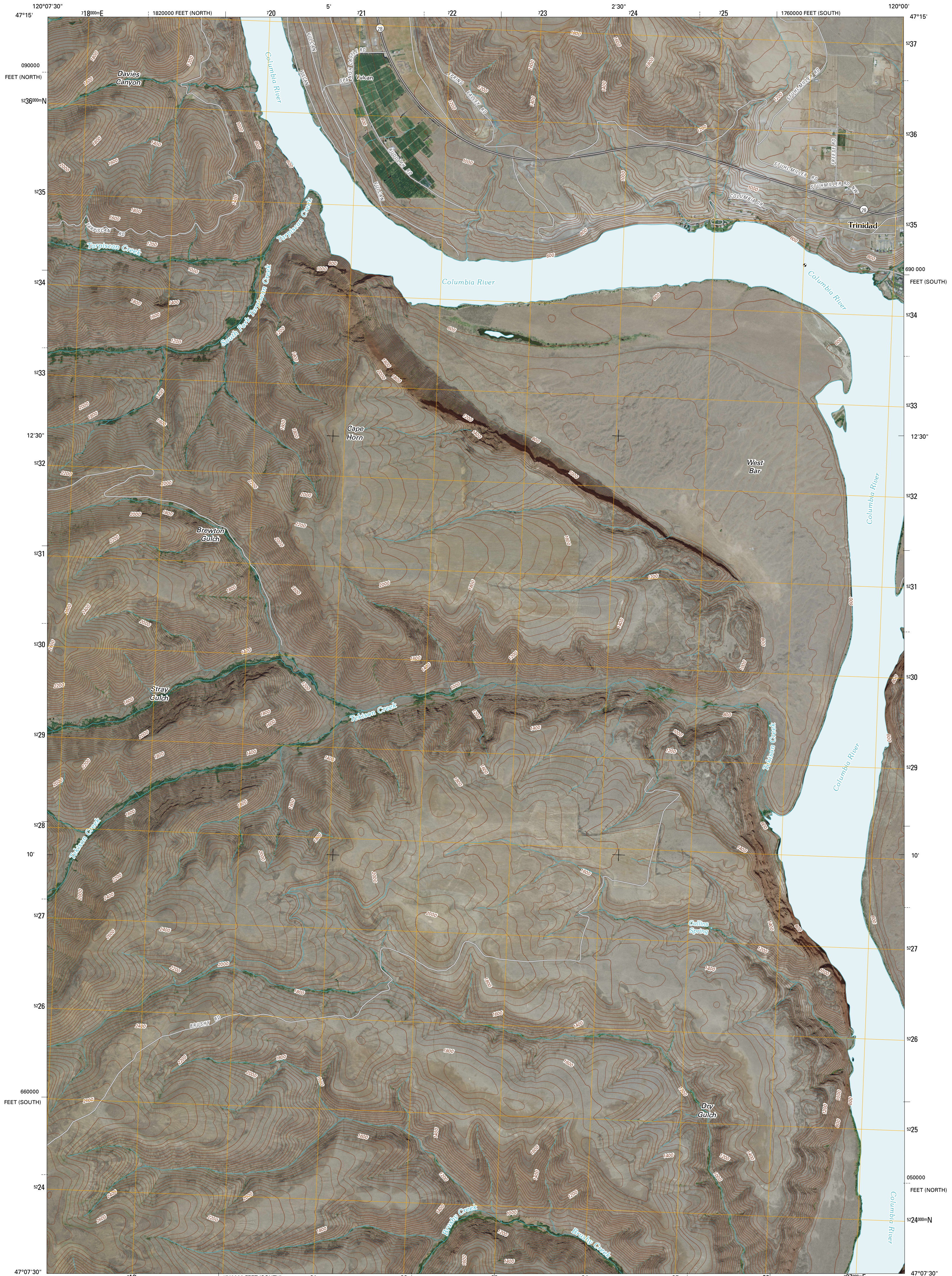




U.S. DEPARTMENT OF THE INTERIOR  
U. S. GEOLOGICAL SURVEY

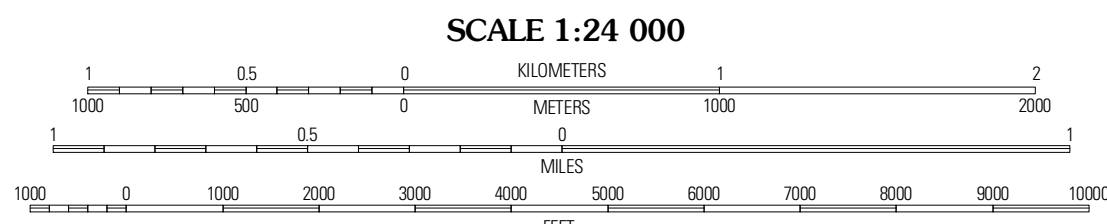
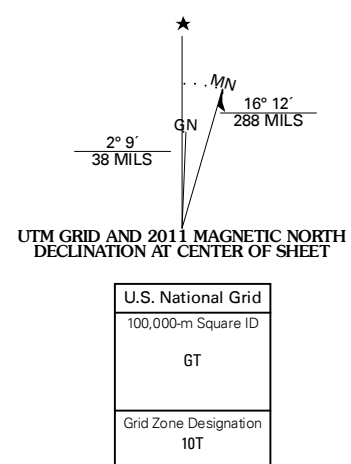


WEST BAR QUADRANGLE  
WASHINGTON  
7.5-MINUTE SERIES



Produced by the United States Geological Survey  
North American Datum of 1983 (NAD83)  
World Geodetic System of 1984 (WGS84). Projection and  
1 000-meter grid: Universal Transverse Mercator, Zone 10T  
10 000-foot ticks: Washington Coordinate System of 1983  
(south and north zones)

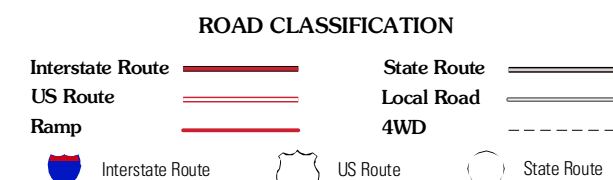
Imagery.....NAIP, July 2009  
Roads.....©2006-2010 Tele Atlas  
Names.....GNIS, 2009  
Hydrography.....National Hydrography Dataset, 2009  
Contours.....National Elevation Dataset, 1999



QUADRANGLE LOCATION

Melaga	Rock Island Dam	Applelake
Stray Gulch	West Bar	Babcock Ridge
Whiskey Dick Mountain	Cape Horn SE	Evergreen Ridge

ADJOINING 7.5 QUADRANGLES



CONTOUR INTERVAL 40 FEET  
NORTH AMERICAN VERTICAL DATUM OF 1988  
This map was produced to conform with version 0.5.10 of the  
draft USGS Standards for 7.5-Minute Quadrangle Maps.  
A metadata file associated with this product is draft version 0.5.11

WEST BAR, WA  
2011