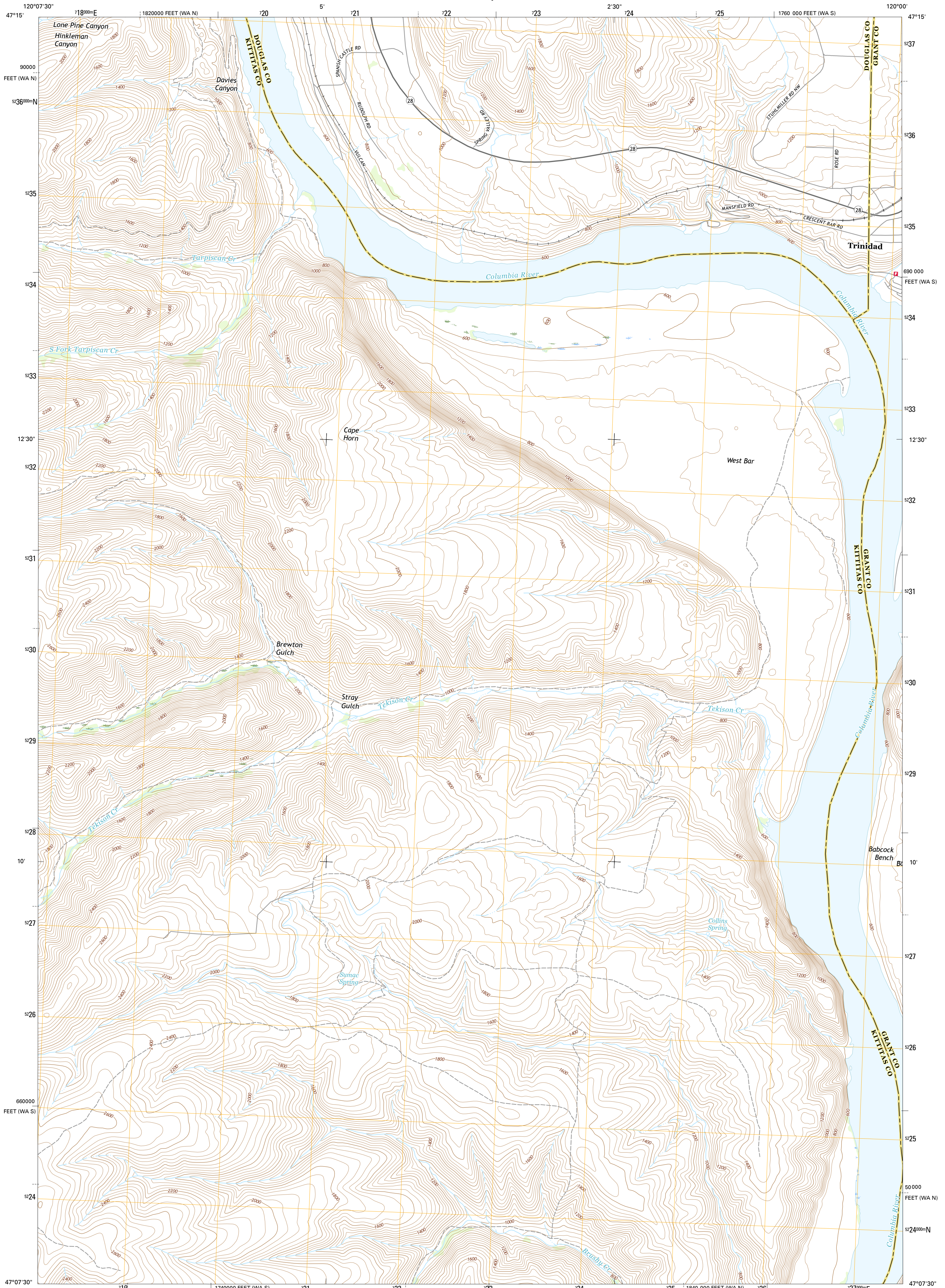




U.S. DEPARTMENT OF THE INTERIOR  
U.S. GEOLOGICAL SURVEY



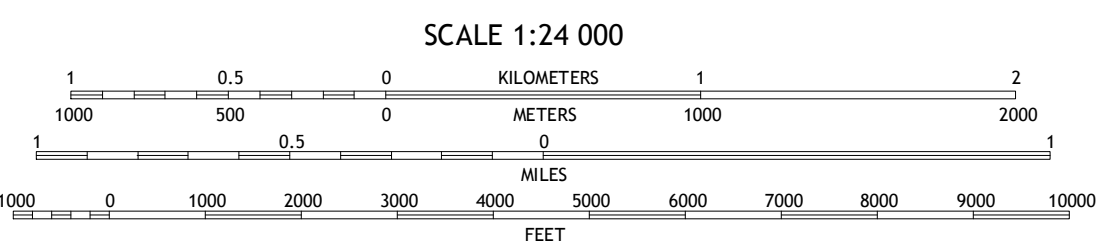
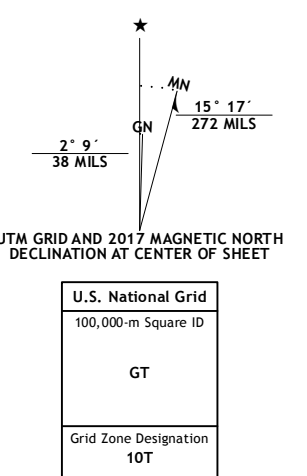
WEST BAR QUADRANGLE  
WASHINGTON  
7.5-MINUTE SERIES



**Produced by the United States Geological Survey**  
 North American Datum of 1983 (NAD83)  
 World Geodetic System of 1984 (WGS84). Projection and  
 1000-meter grid: Universal Transverse Mercator, Zone 10T  
 10 000-foot ticks: Washington Coordinate System of 1983 (south  
 and north zones)

This map is not a legal document. Boundaries may be  
 generalized for this map scale. Private lands within government  
 reservations may not be shown. Obtain permission before  
 entering private lands.

Imagery.....	N.A.I.P., November 2015
Roads.....	U.S. Census Bureau, 2015 - 2016
Names.....	G.N.I.S., 2016
Hydrography.....	National Hydrography Dataset, 2015
Contours.....	National Elevation Dataset, 1999
Boundaries.....	Multiple sources; see metadata file 1972 - 2016
Public Land Survey System.....	BLM, 2016
Wetlands.....	FWS National Wetlands Inventory 1977 - 2014



**ROAD CLASSIFICATION**

	Expressway		Local Connector
	Secondary Hwy		Local Road
	Ramp		4WD
	Interstate Route		US Route
			State Route

CONTOUR INTERVAL 40 FEET  
 NORTH AMERICAN VERTICAL DATUM OF 1988

This map was produced to conform with the  
 National Geospatial Program US Topo Product Standard, 2011.  
 A metadata file associated with this product is draft version 0.6.19

1	2	3
4	5	6
7	8	9

ADJOINING QUADRANGLES

- 1 Malaga
- 2 Rock Island Dam
- 3 Applegate
- 4 Stray Gulch
- 5 Babcock Ridge
- 6 Whiskey Dick Mountain
- 7 Cape Horn SE
- 8 Evergreen Ridge

WEST BAR, WA  
2017

