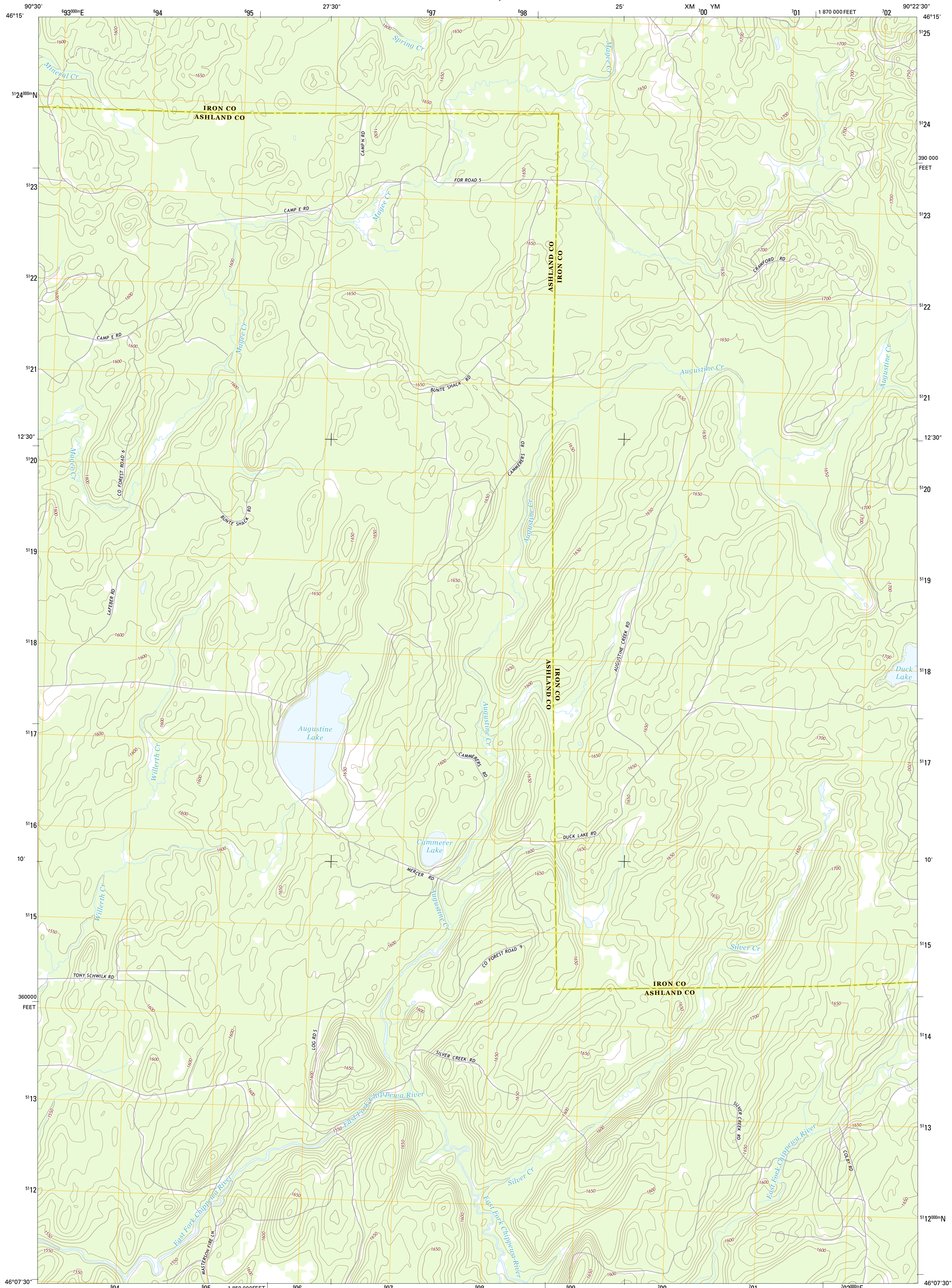




U.S. DEPARTMENT OF THE INTERIOR  
U. S. GEOLOGICAL SURVEY

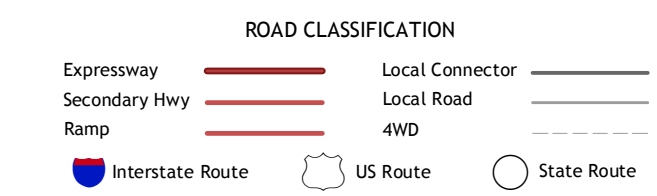
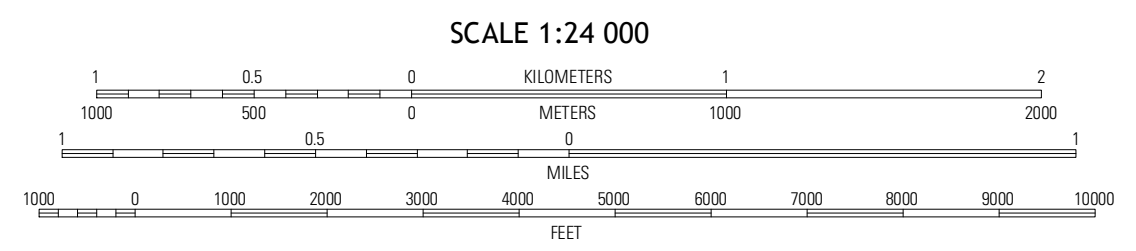
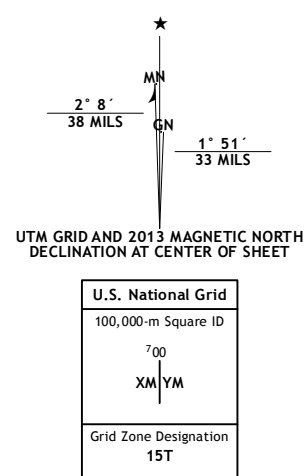


AUGUSTINE LAKE QUADRANGLE  
WISCONSIN  
7.5-MINUTE SERIES



Produced by the United States Geological Survey  
North American Datum of 1983 (NAD83)  
World Geodetic System of 1984 (WGS84). Projection and  
1 000-meter grid: Universal Transverse Mercator, Zone 15T  
10 000-foot ticks: Wisconsin Coordinate System of 1983 (north  
zone)

Imagery.....NIP, August 2010  
Roads.....©2006-2012 TomTom  
Names.....GNS, 2013  
Hydrography.....National Hydrography Dataset, 2010  
Contours.....National Elevation Dataset, 2002  
Boundaries.....Census, IBWC, IBC, USGS, 1972 - 2012



CONTOUR INTERVAL 10 FEET  
NORTH AMERICAN VERTICAL DATUM OF 1988

This map was produced to conform with the  
National Geospatial Program US Topo Product Standard, 2011.  
A metadata file associated with this product is draft version 0.6.12

QUADRANGLE LOCATION

|                  |                   |                      |
|------------------|-------------------|----------------------|
| Mount<br>Whitely | Upon              | Turtletalk<br>Creek  |
| Glidden          | Augustine<br>Lake | Lake<br>Six          |
| Peeksville       | Butternut         | Hay Creek<br>Flowage |

ADJOINING 7.5' QUADRANGLES

AUGUSTINE LAKE, WI  
2013