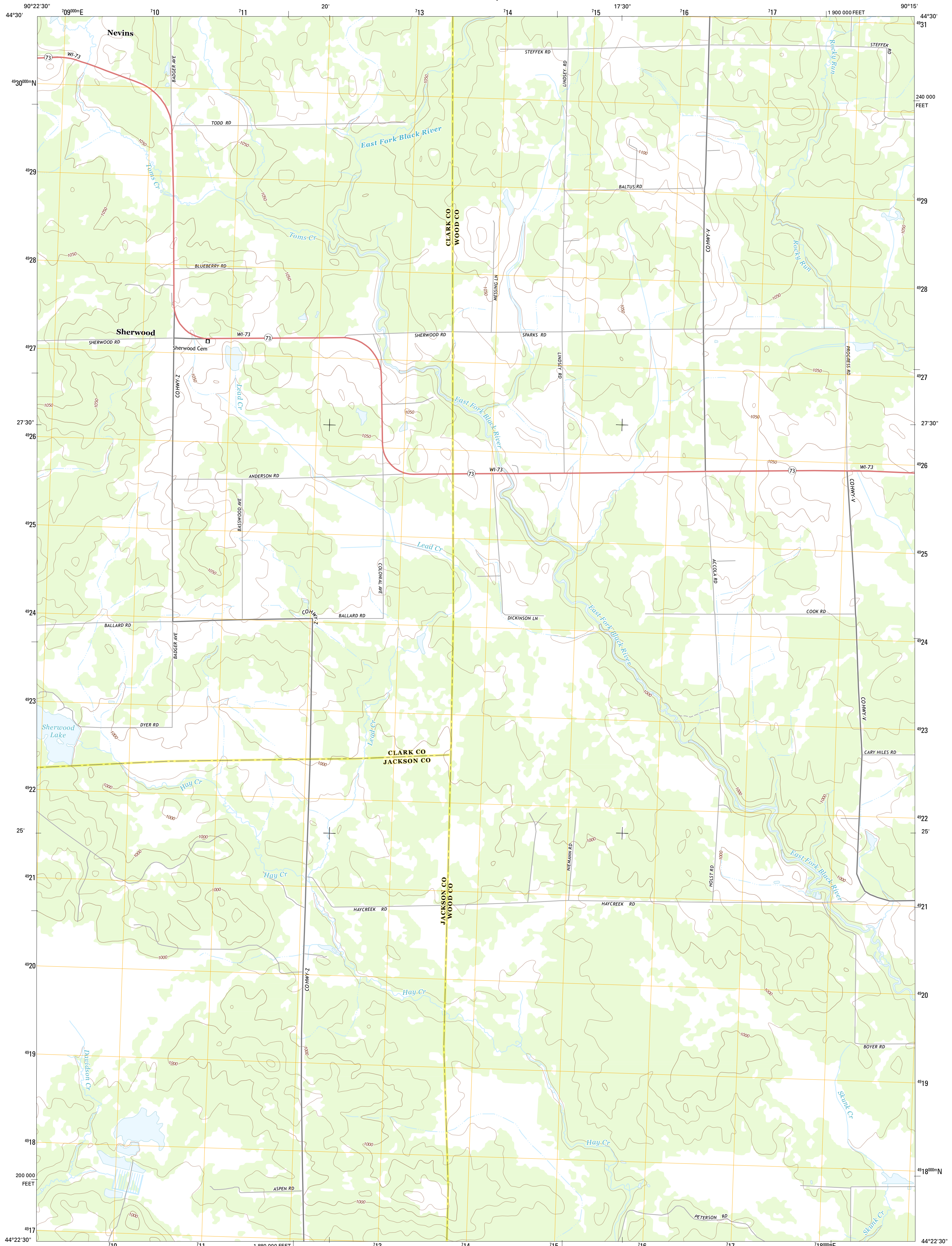




U.S. DEPARTMENT OF THE INTERIOR
U. S. GEOLOGICAL SURVEY

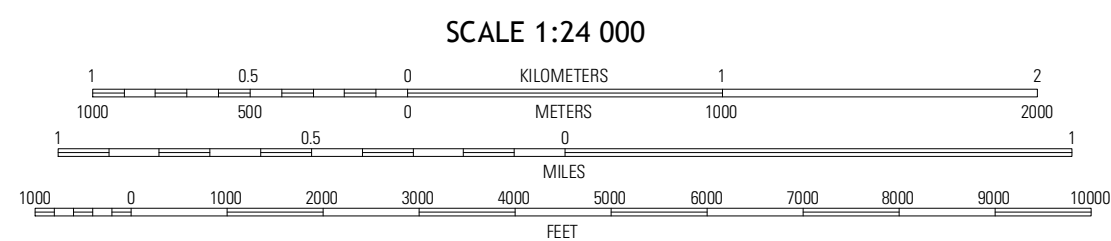
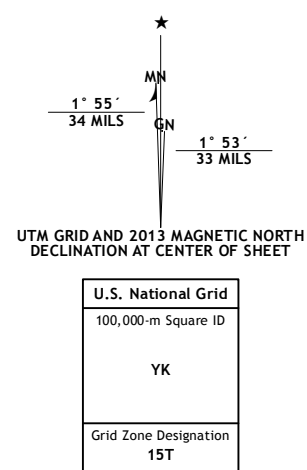


CITY POINT NE QUADRANGLE
WISCONSIN
7.5-MINUTE SERIES



Produced by the United States Geological Survey
North American Datum of 1983 (NAD83)
World Geodetic System of 1984 (WGS84). Projection and
1 000-meter grid: Universal Transverse Mercator, Zone 15T
10 000-foot ticks: Wisconsin Coordinate System of 1983 (central zone)

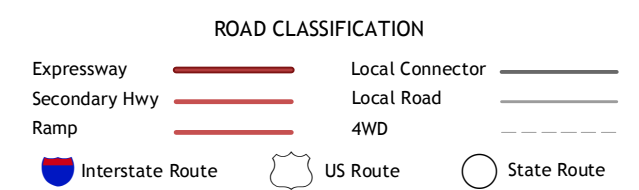
Imagery.....NAIP, August 2010
Roads.....©2006-2012 TomTom
Names.....©2013
Hydrography.....National Hydrography Dataset, 2010
Contours.....National Elevation Dataset, 1999
Boundaries.....Census, IBWC, IBC, USGS, 1972 - 2012



CONTOUR INTERVAL 10 FEET
NORTH AMERICAN VERTICAL DATUM OF 1988
This map was produced to conform with the
National Geospatial Program US Topo Product Standard, 2011.
A metadata file associated with this product is draft version 0.6.12



ADJOINING 7.5 QUADRANGLES		
Granton	Lindsey	Lake Manakiki
City Point NW	City Point NE	Pittsville
Spaulding	City Point	Quail Point Flowage



CITY POINT NE, WI
2013