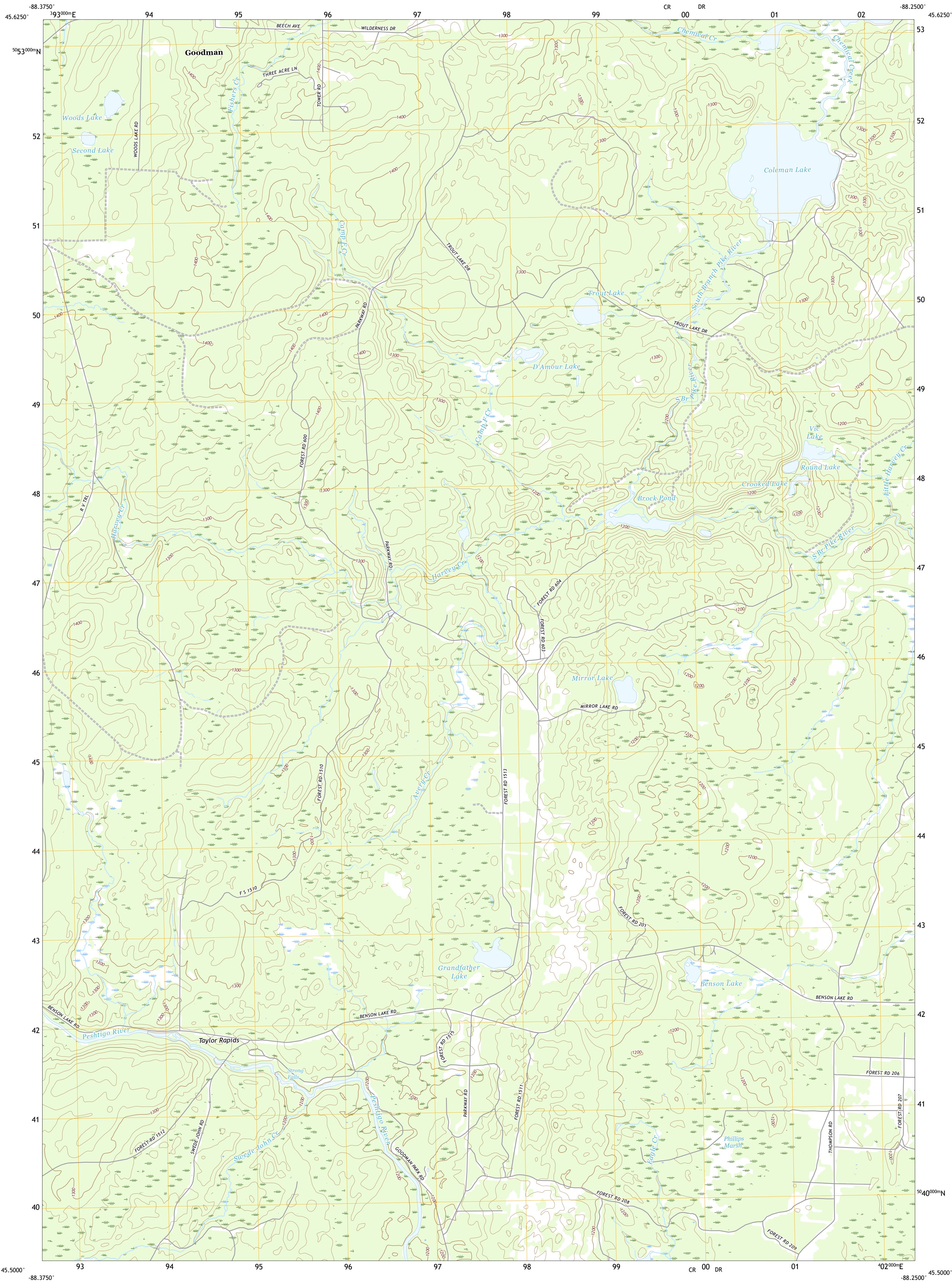




U.S. DEPARTMENT OF THE INTERIOR
U.S. GEOLOGICAL SURVEY

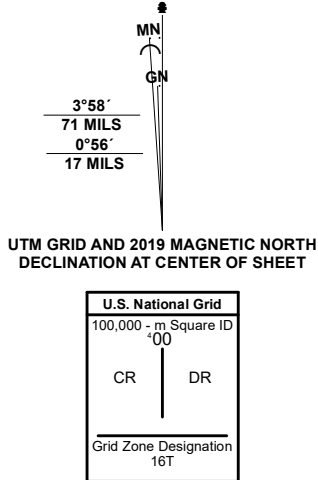


COLEMAN LAKE QUADRANGLE
WISCONSIN - MARINETTE COUNTY
7.5-MINUTE SERIES

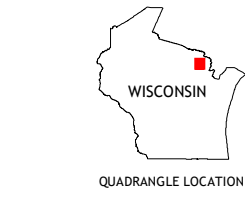


Produced by the United States Geological Survey

North American Datum of 1983 (NAD83)
World Geodetic System of 1984 (WGS84), Projection and
1 000-meter grid; Universal Transverse Mercator, Zone 16T
This map is not a legal document. Boundaries may be
generalized for this map scale. Private lands within government
reservations may not be shown. Obtain permission before
entering private lands.
Imagery.....NAIP, October 2018 - October 2018
Roads.....U.S. Census Bureau, 2015 2018
Names.....GNIS, 1980 2021
Hydrography.....National Hydrography Dataset, 2002 - 2018
Contours.....National Elevation Dataset, 2008
Boundaries.....Multiple sources: see metadata file 2019 2021
Public Land Survey System.....BLM, 2017 - 2020
Wetlands.....FWS National Wetlands Inventory 2010



CONTOUR INTERVAL 20 FEET
NORTH AMERICAN VERTICAL DATUM OF 1988
This map was produced to conform with the
National Geospatial Program US Topo Product Standard.



1	2	3
4	5	6
7	8	9

1 Armstrong Creek
2 Goodman
3 Dunbar
4 Goodman SW
5 Twelvelfoot Falls
6 McCastin Mountain
7 Roaring Rapids
8 Lehman Lake

ROAD CLASSIFICATION		
Expressway	Local Connector	
Secondary Hwy	Local Road	
Ramp	4WD	
Interstate Route	US Route	State Route

COLEMAN LAKE, WI
2022

