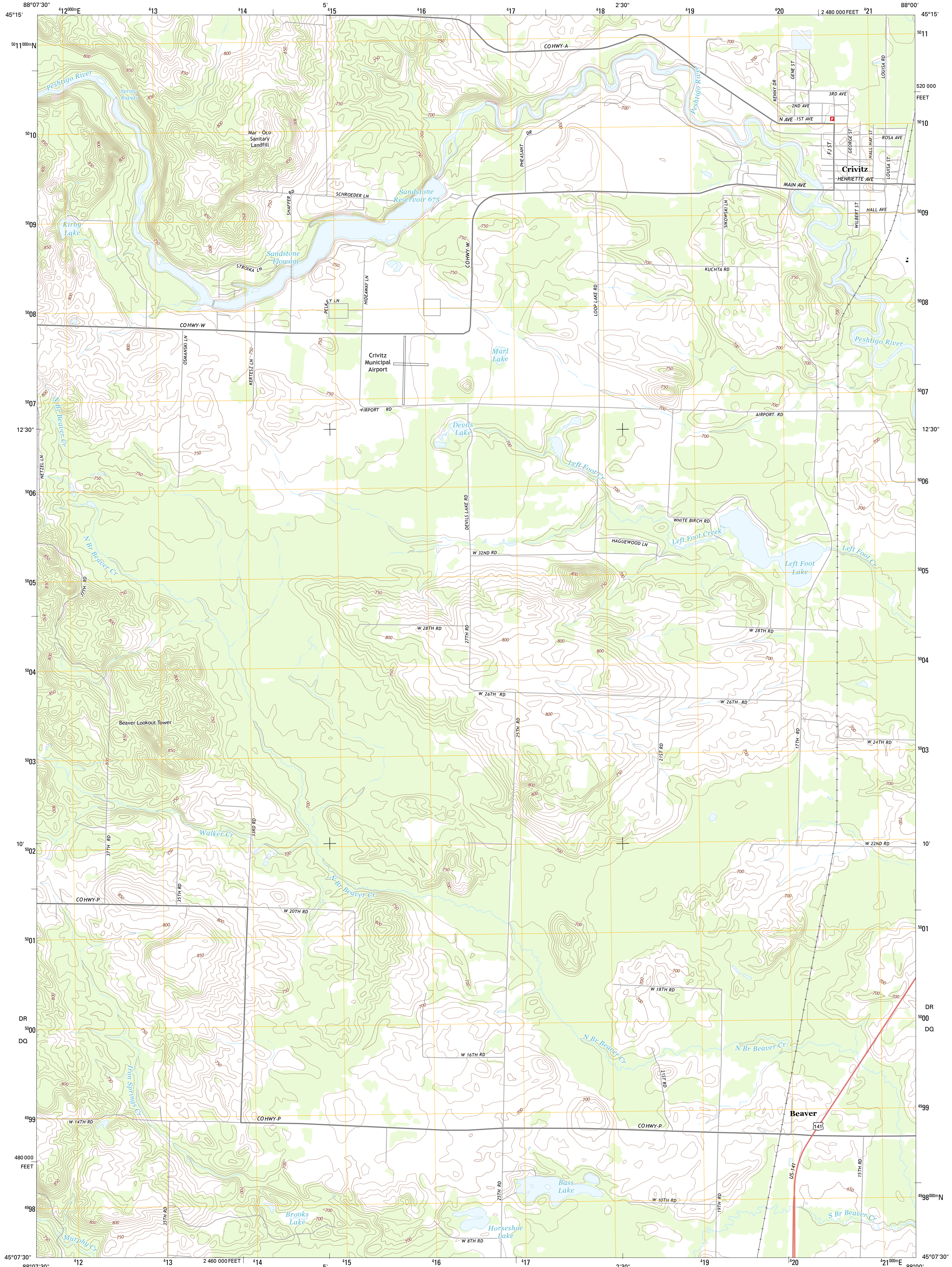




U.S. DEPARTMENT OF THE INTERIOR  
U. S. GEOLOGICAL SURVEY

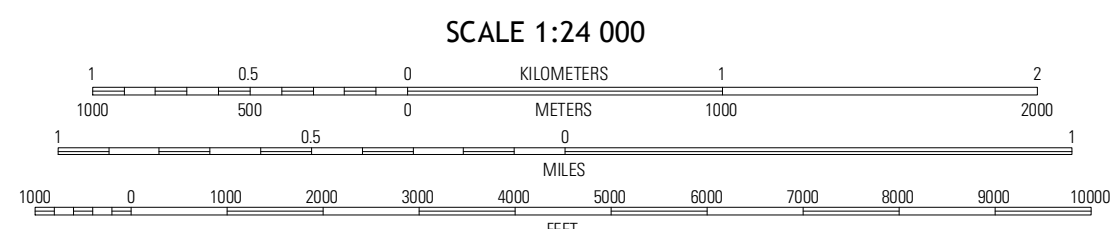
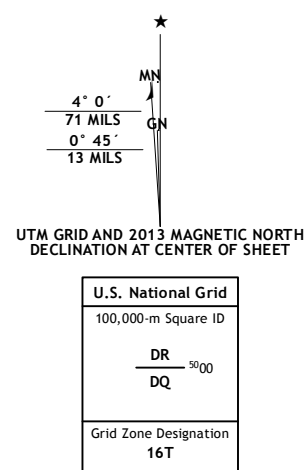


CRIVITZ QUADRANGLE  
WISCONSIN-MARINETTE CO.  
7.5-MINUTE SERIES



Produced by the United States Geological Survey  
North American Datum of 1983 (NAD83)  
World Geodetic System of 1984 (WGS84). Projection and  
1 000-meter grid: Universal Transverse Mercator, Zone 14T  
10 000-foot ticks: Wisconsin Coordinate System of 1983 (central  
zone)

Imagery.....NAIP, July 2010  
Roads.....©2006-2012 TomTom  
Names.....GNS, 2013  
Hydrography.....National Hydrography Dataset, 2010  
Contours.....National Elevation Dataset, 1999  
Boundaries.....Census, IBWC, IBC, USGS, 1972 - 2012

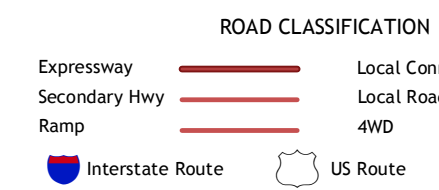


CONTOUR INTERVAL 10 FEET  
NORTH AMERICAN VERTICAL DATUM OF 1988  
This map was produced to conform with the  
National Geospatial Program US Topo Product Standard, 2011.  
A metadata file associated with this product is draft version 0.6.12



QUADRANGLE LOCATION

High Falls Reservoir	Mount Tom	Wasaukee South
White Potato Lake	Crivitz	Loomis
Kelly Lake	Coleman	Porterfield SW



CRIVITZ, WI  
2013

ADJOINING 7.5' QUADRANGLES