

Produced by the United States Geological Survey North American Datum of 1983 (NAD83) World Geodetic System of 1984 (WGS84) Projection and 1 000-meter grid/Universal Transverse Mercator, Zone 15T This map is not a legal document. Boundaries may be generalized for this map scale. Private lands within government reservations may not be shown. Obtain permission before entering private lands.

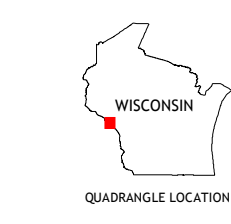
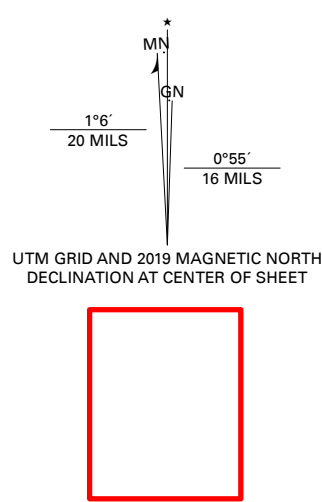


Table with 3 columns and 4 rows showing adjacent quadrangles: 1 Cream, 2 Waumandee, 3 Swinns Valley, 4 Cochrane, 5 Dodge, 6 Rollingstone, 7 Winona West, 8 Winona East.

