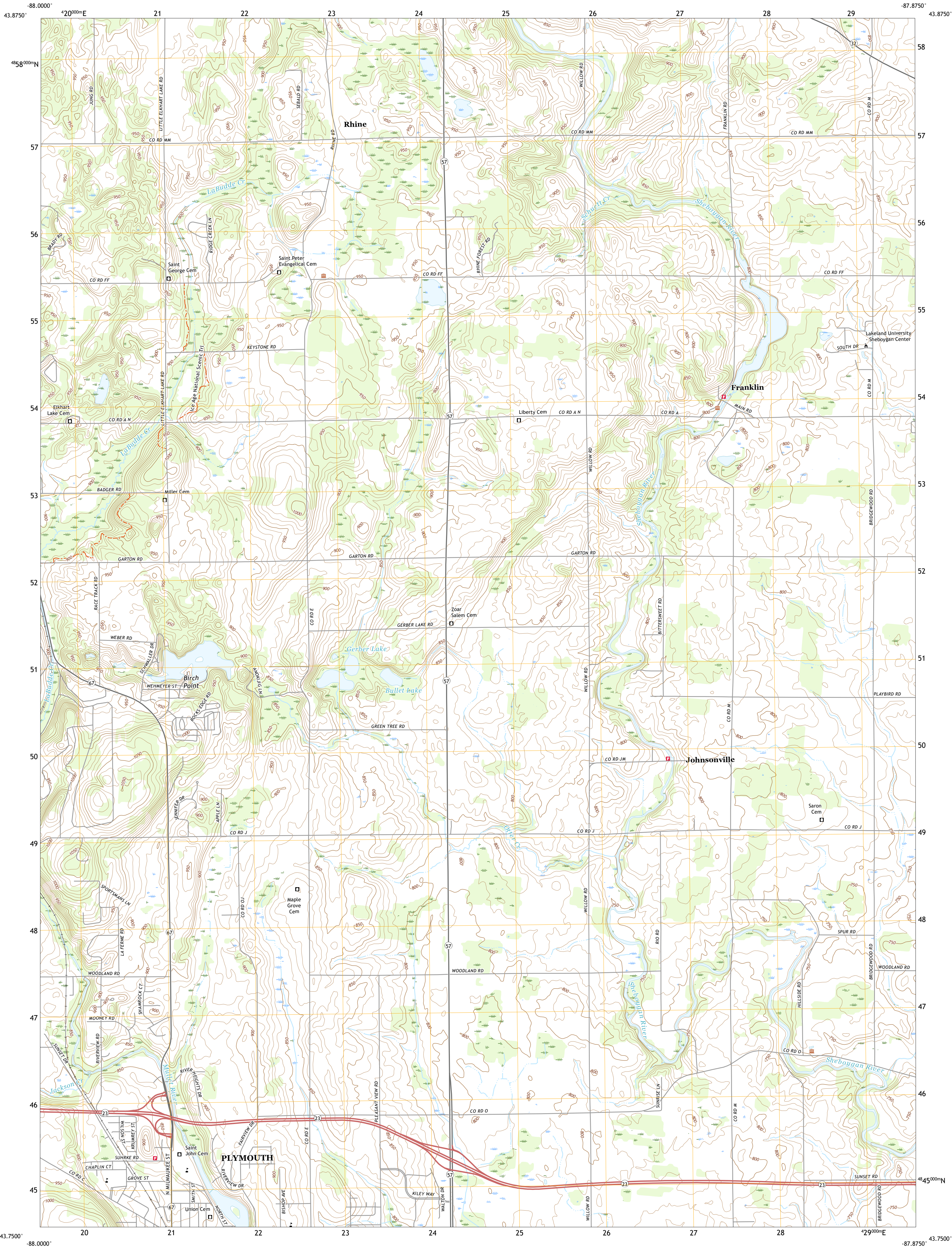




U.S. DEPARTMENT OF THE INTERIOR
U.S. GEOLOGICAL SURVEY



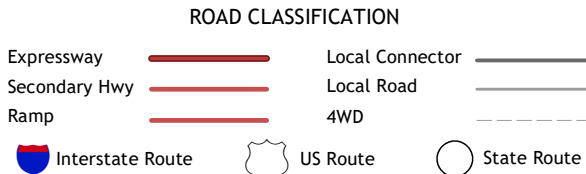
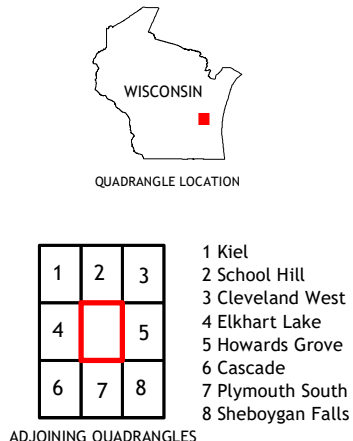
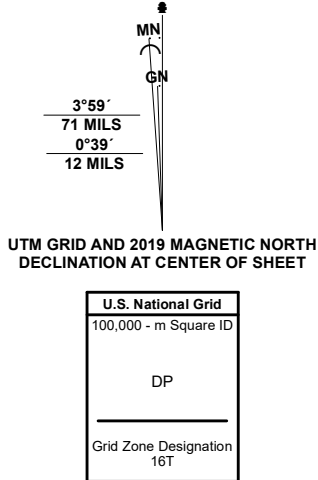
FRANKLIN QUADRANGLE
WISCONSIN - SHEBOYGAN COUNTY
7.5-MINUTE SERIES



Produced by the United States Geological Survey

North American Datum of 1983 (NAD83)
World Geodetic System of 1984 (WGS84) - Projection and
1 000-meter grid/Universal Transverse Mercator, Zone 16T
This map is not a legal document. Boundaries may be
generalized for this map scale. Private lands within government
reservations may not be shown. Obtain permission before
entering private lands.

Imagery.....	NAIP, September 2018 - September 2018
Roads.....	U.S. Census Bureau 2015 - 2018
Names.....	GNIS, 1980 - 2021
Hydrography.....	National Hydrography Dataset, 2005 - 2019
Contours.....	National Elevation Dataset, 2008
Boundaries.....	Multiple sources: see metadata file 2019 - 2021
Public Land Survey System.....	BLM, 2017 - 2020
Wetlands.....	FWS National Wetlands Inventory 2008



FRANKLIN, WI
2022

