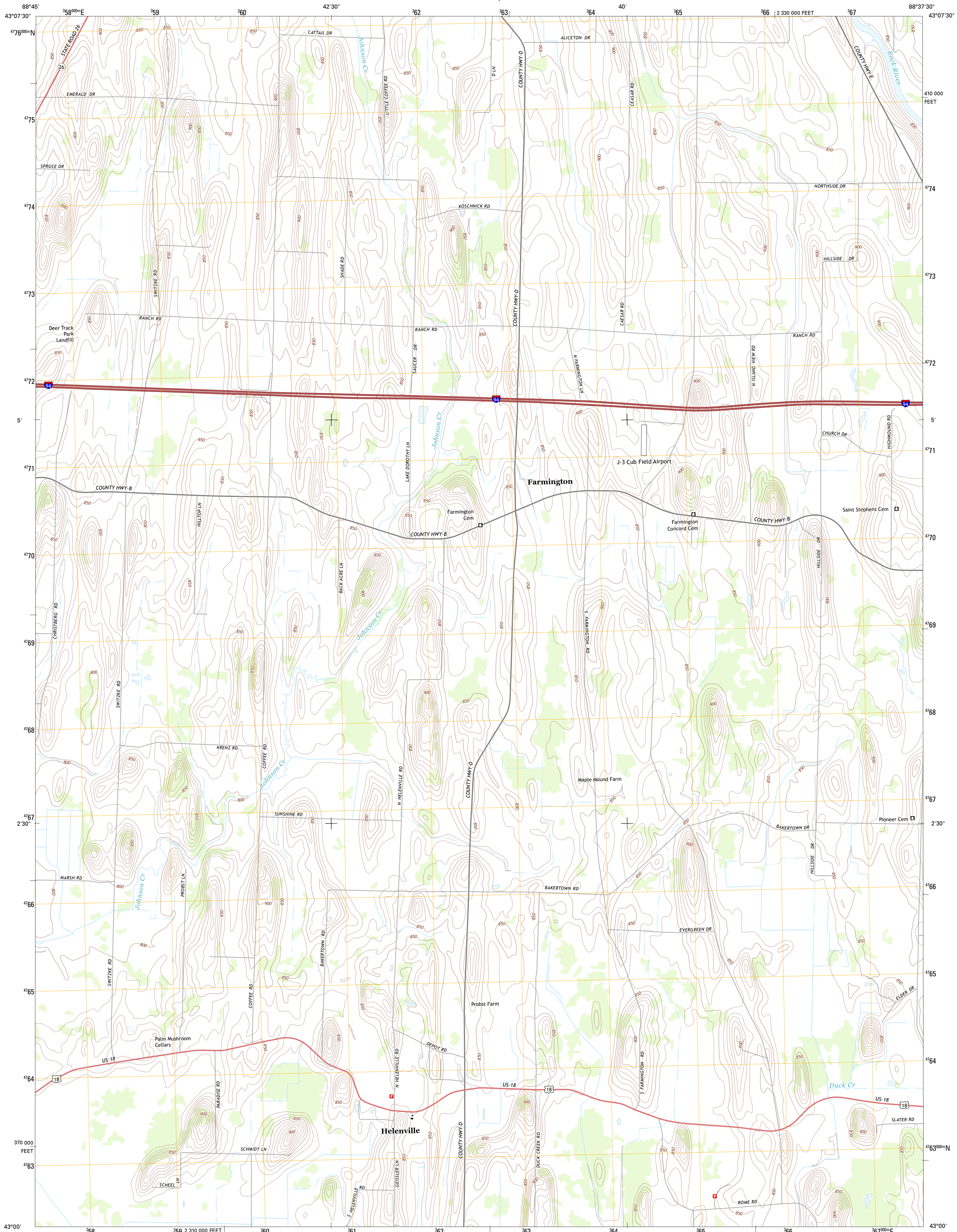




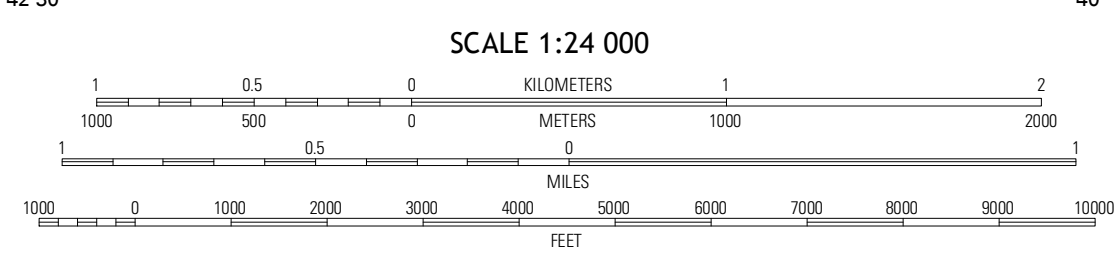
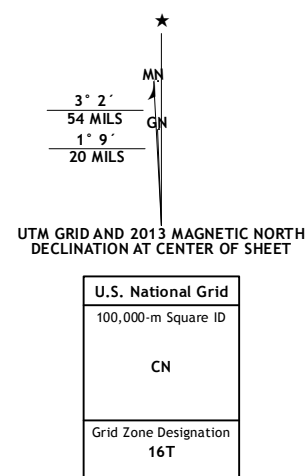
U.S. DEPARTMENT OF THE INTERIOR  
U. S. GEOLOGICAL SURVEY



HELENVILLE QUADRANGLE  
WISCONSIN-JEFFERSON CO.  
7.5-MINUTE SERIES



Produced by the United States Geological Survey  
North American Datum of 1983 (NAD83)  
World Geodetic System of 1984 (WGS84), Projection and  
1 000-meter grid; Universal Transverse Mercator, Zone 16T  
10 000-foot ticks; Wisconsin Coordinate System of 1983 (south zone)



ROAD CLASSIFICATION

Expressway  
Secondary Hwy  
Ramp  
Interstate Route

Local Connector  
Local Road  
4WD  
US Route  
State Route

Imagery.....NAIP, July 2010  
Roads.....©2006-2012 TomTom  
Names.....©2013  
Hydrography.....National Hydrography Dataset, 2010  
Contours.....National Elevation Dataset, 1999  
Boundaries.....Census, IBWC, IBC, USGS, 1972-2012

CONTOUR INTERVAL 10 FEET  
NORTH AMERICAN VERTICAL DATUM OF 1988

This map was produced to conform with the  
National Geospatial Program US Topo Product Standard, 2011.  
A metadata file associated with this product is draft version 0.6.12

QUADRANGLE LOCATION

Richwood	Watertown	Ionia
Jefferson	Helenville	Okonomowoc West
Fort Atkinson	Rome	Palmyra

HELENVILLE, WI  
2013

ADJOINING 7.5 QUADRANGLES