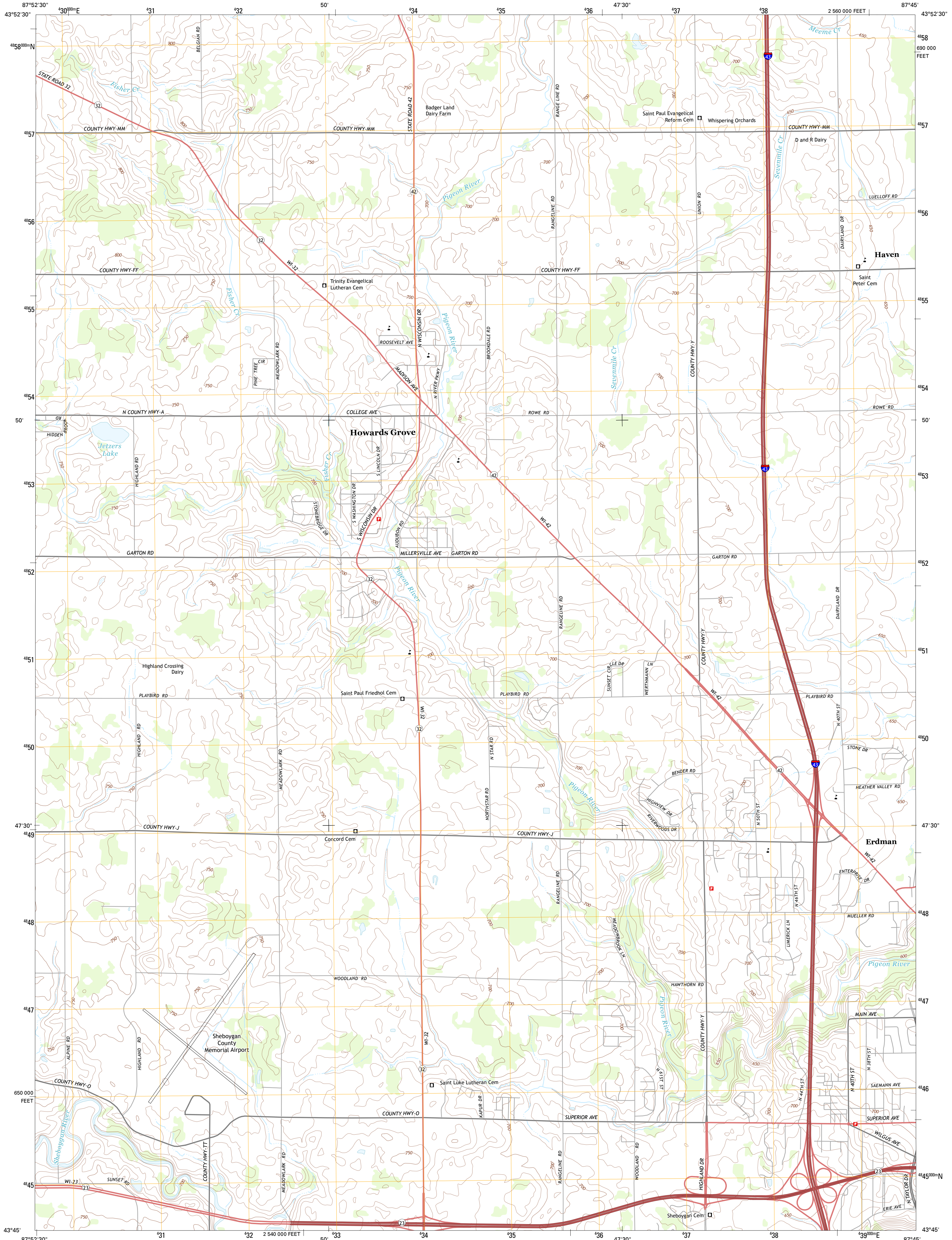




U.S. DEPARTMENT OF THE INTERIOR
U. S. GEOLOGICAL SURVEY

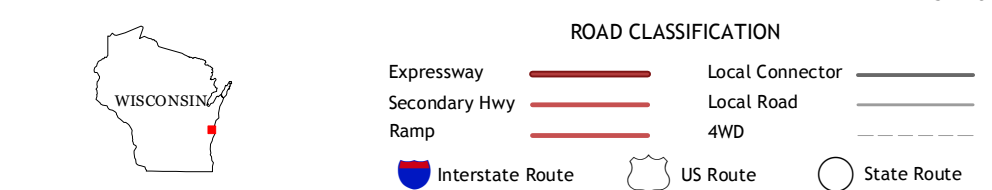
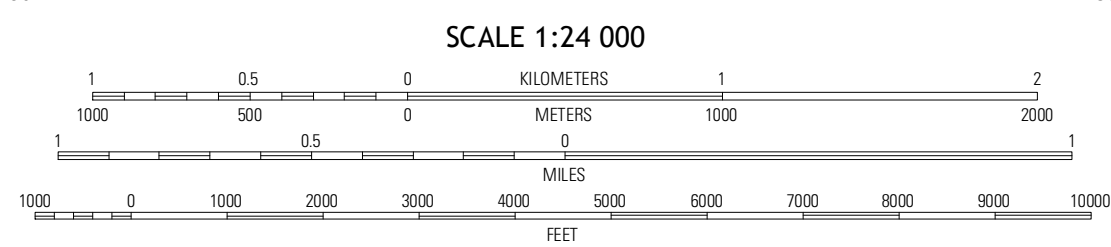
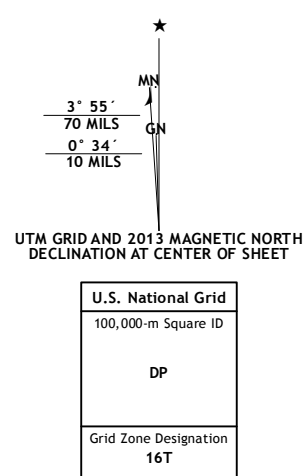


HOWARDS GROVE QUADRANGLE
WISCONSIN-SHEBOYGAN CO.
7.5-MINUTE SERIES



Produced by the United States Geological Survey
North American Datum of 1983 (NAD83)
World Geodetic System of 1984 (WGS84). Projection and
1000-meter grid: Universal Transverse Mercator, Zone 16T
10 000-foot ticks: Wisconsin Coordinate System of 1983 (south zone)

Imagery.....NAIP, July 2010
Roads.....©2006-2012 TomTom
Names.....GNIS, 2013
Hydrography.....National Hydrography Dataset, 2010
Contours.....National Elevation Dataset, 2008
Boundaries.....Census, IBWC, IBC, USGS, 1972 - 2012



School Hill	Cleveland West	Cleveland East
Finnkinn	Howards Grove	Sheboygan North
Plymouth South	Sheboygan Falls	Sheboygan South

HOWARDS GROVE, WI
2013

ADJOINING 7.5 QUADRANGLES