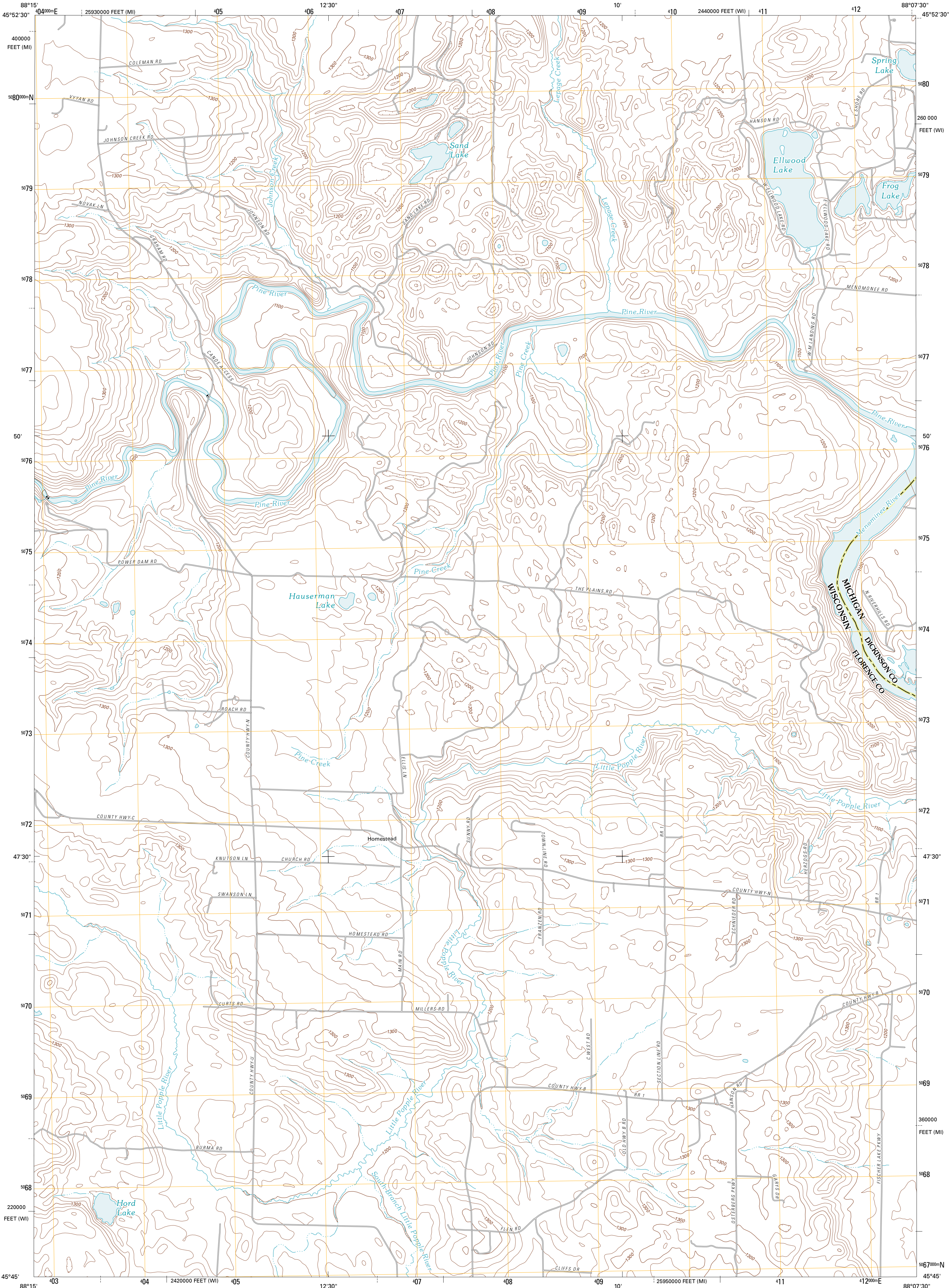




U.S. DEPARTMENT OF THE INTERIOR
U. S. GEOLOGICAL SURVEY

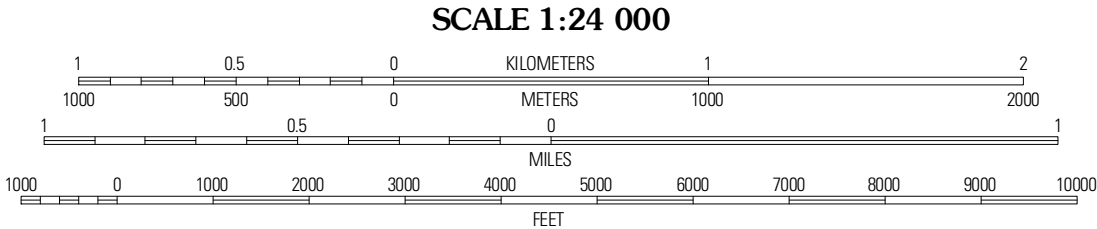
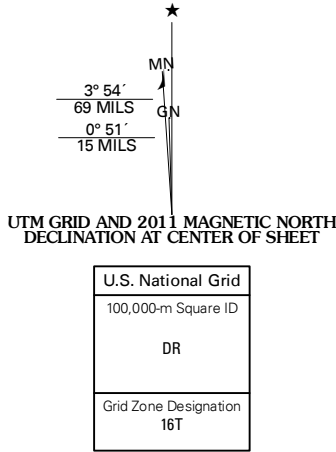


IRON MOUNTAIN SW QUADRANGLE
WISCONSIN-MICHIGAN
7.5-MINUTE SERIES



Produced by the United States Geological Survey
North American Datum of 1983 (NAD83)
World Geodetic System of 1984 (WGS84). Projection and
1 000-meter grid: Universal Transverse Mercator, Zone 16T
10 000-foot ticks: Wisconsin Coordinate System of 1983
(north zone), Michigan Coordinate System of 1983 (north
zone)

Imagery.....NAIP, July 2008
Roads.....©2006-2010 Tele Atlas
Names.....GNIS, 2010
Hydrography.....National Hydrography Dataset, 2008
Contours.....National Elevation Dataset, 2008
Boundaries.....Census, BWC, IBC, USGS, 1972 - 2010

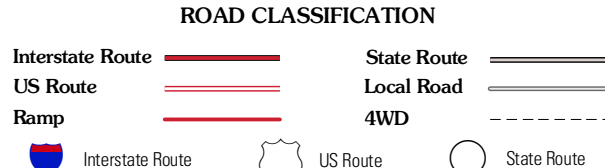


CONTOUR INTERVAL 20 FEET
NORTH AMERICAN VERTICAL DATUM OF 1988
This map was produced to conform with version 0.5.10
of the USGS US Topo Product Standard.
A metadata file associated with this product is draft version 0.5.16



Florence West	Florence East	Randville
Florence SE	Iron Mountain SW	Iron Mountain NE
Goodman	Dunbar	Dunbar NE

ADJOINING 7.5' QUADRANGLES



IRON MOUNTAIN SW, WI-MI
2011