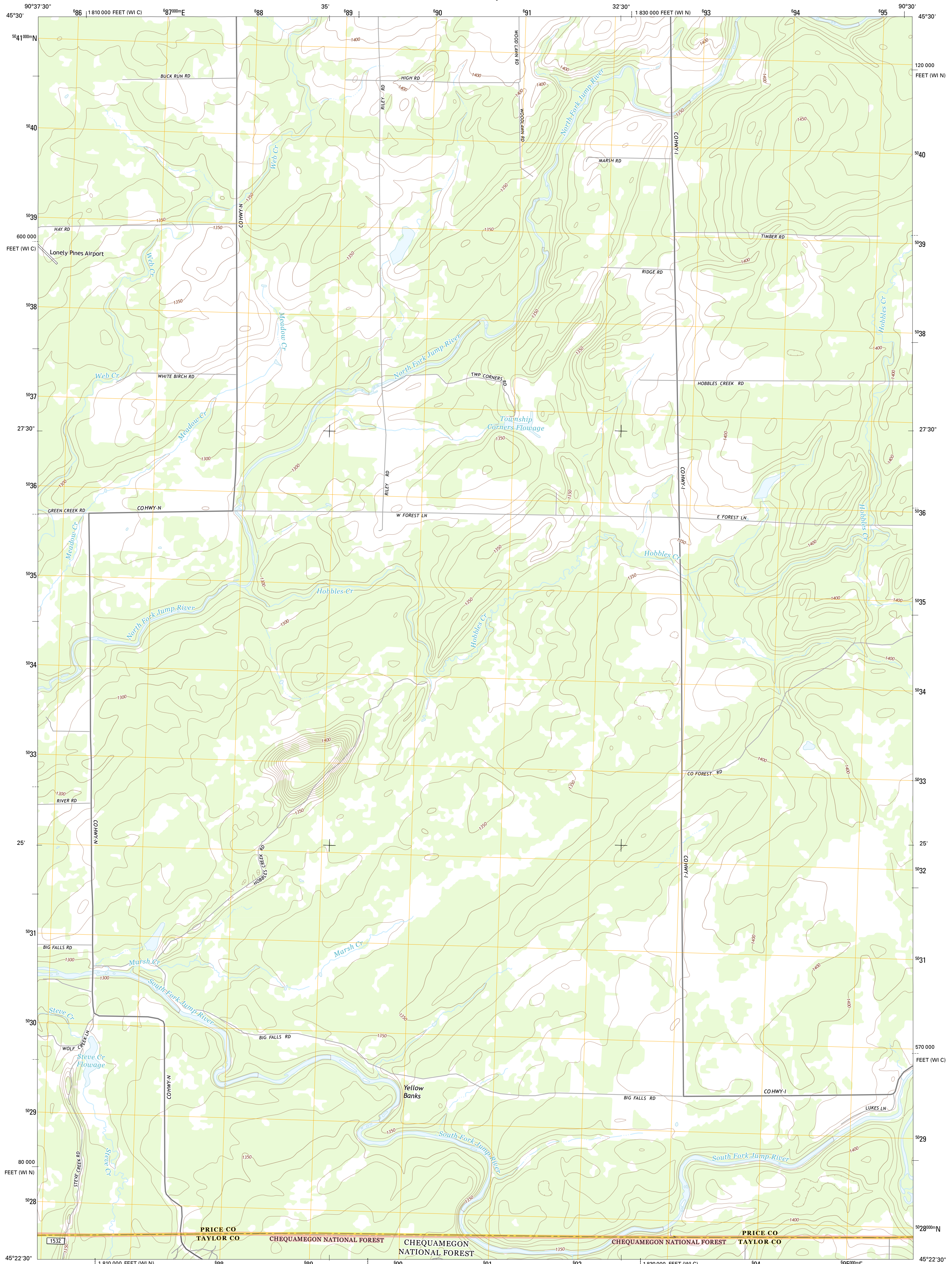




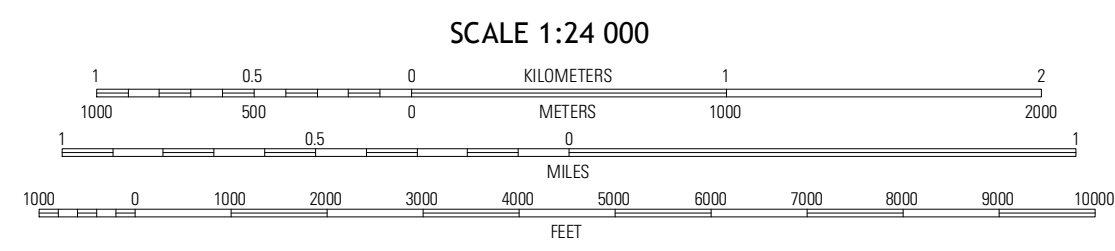
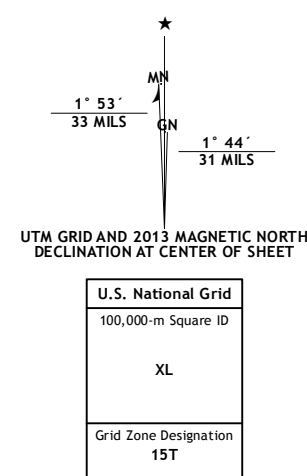
U.S. DEPARTMENT OF THE INTERIOR
U. S. GEOLOGICAL SURVEY



JUMP RIVER FIRE TOWER NE QUADRANGLE
WISCONSIN
7.5-MINUTE SERIES



Produced by the United States Geological Survey
North American Datum of 1983 (NAD83)
World Geodetic System of 1984 (WGS84), Projection and
1 000-meter grid: Universal Transverse Mercator, Zone 15T
10 000-foot ticks: Wisconsin Coordinate System of 1983 (north
and central zones)



QUADRANGLE LOCATION

Hawkins	Kenan	Pennington
Jump River Fire Tower SW	Jump River Fire Tower SE	Ogema NW
Jump River Fire Tower SW	Jump River Fire Tower	Mondeaux Dam

ADJOINING 7.5 QUADRANGLES

- ROAD CLASSIFICATION
- Expressway
 - Secondary Hwy
 - Ramp
 - Interstate Route
 - FS Primary Route
 - Local Connector
 - Local Road
 - 4WD
 - US Route
 - FS Passenger Route
 - FS High Clearance Route
 - State Route
- Check with local Forest Service unit for current travel conditions and restrictions.

JUMP RIVER FIRE TOWER NE, WI
2013

Imagery.....NAIP, August 2010
Roads.....2006-2012 TomTom
Roads within US Forest Service Lands.....FS Topo Data
with Limited Forest Service updates, 2013
Names.....GNIS, 2013
Hydrography.....National Hydrography Dataset, 2010
Contours.....National Elevation Dataset, 2002
Boundaries.....Census, IBWC, IBC, USGS, 1972 - 2012

CONTOUR INTERVAL 10 FEET
NORTH AMERICAN VERTICAL DATUM OF 1988
This map was produced to conform with the
National Geospatial Program US Topo Product Standard, 2011.
A metadata file associated with this product is draft version 0.6.12