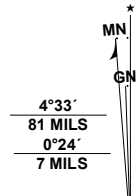




Produced by the United States Geological Survey

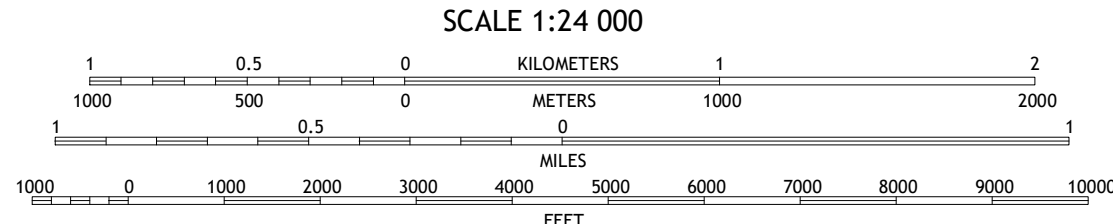
North American Datum of 1983 (NAD83)  
World Geodetic System of 1984 (WGS84) - Projection and  
1 000-meter grid/Universal Transverse Mercator, Zone 16T  
This map is not a legal document. Boundaries may be  
generalized for this map scale. Private lands within government  
reservations may not be shown. Obtain permission before  
entering private lands.

Imagery.....NAIP, September 2018 - September 2018  
Roads.....U.S. Census Bureau, 2015 - 2018  
Names.....GNIS, 1980 - 2023  
Hydrography.....National Hydrography Dataset, 2006 - 2019  
Contours.....National Elevation Dataset, 2019  
Boundaries.....Multiple sources; see metadata file 2021 - 2022  
Public Land Survey System.....BLM, 2020  
Wetlands.....FWS National Wetlands Inventory 2009



UTM GRID AND 2023 MAGNETIC NORTH  
DECLINATION AT CENTER OF SHEET

U.S. National Grid
100,000 - m Square ID
DQ
Grid Zone Designation
16T



CONTOUR INTERVAL 10 FEET  
NORTH AMERICAN VERTICAL DATUM OF 1988  
This map was produced to conform with the  
National Geospatial Program US Topo Product Standard.



ADJOINING QUADRANGLES
1 2 3
4 5
6 7 8

1 Peshtigo Harbor  
2 Green Bay (All Water)  
3 Idlewild  
4 Little Sturgeon SW  
5 Sturgeon Bay West  
6 Namur  
7 Brussels  
8 Forestville

ROAD CLASSIFICATION	
Expressway	Local Connector
Secondary Hwy	Local Road
Ramp	4WD
Interstate Route	US Route
	State Route

LITTLE STURGEON, WI

2023

