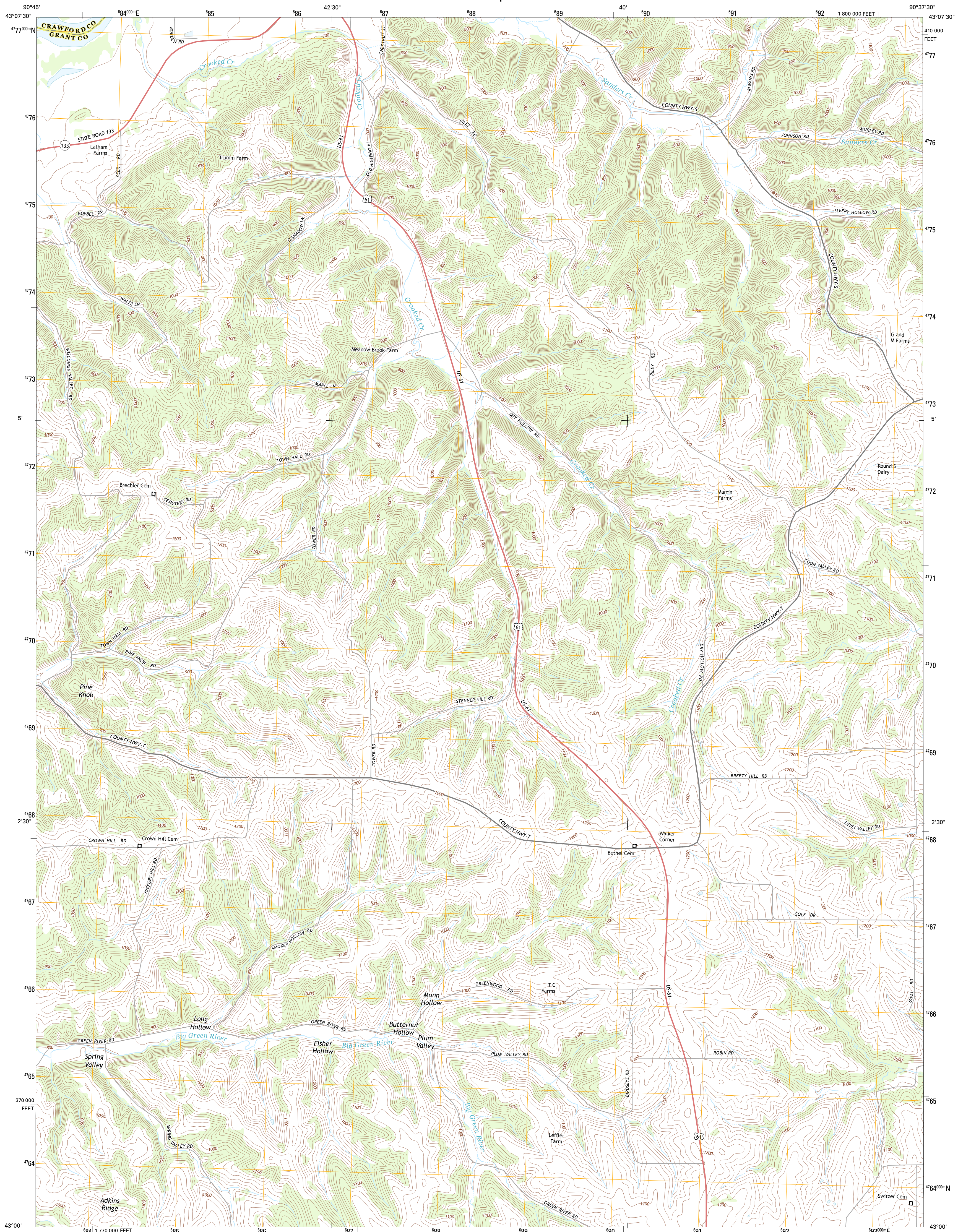




U.S. DEPARTMENT OF THE INTERIOR  
U. S. GEOLOGICAL SURVEY

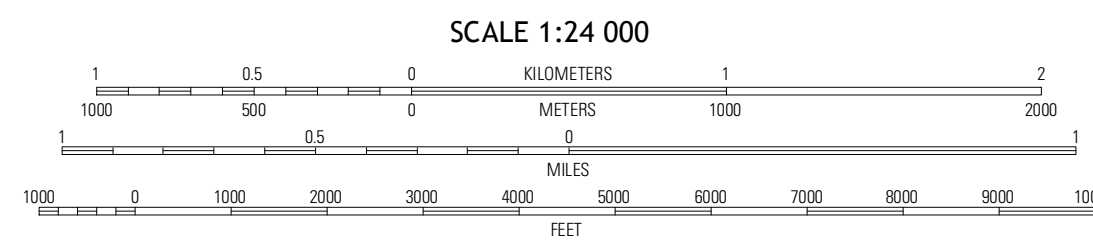
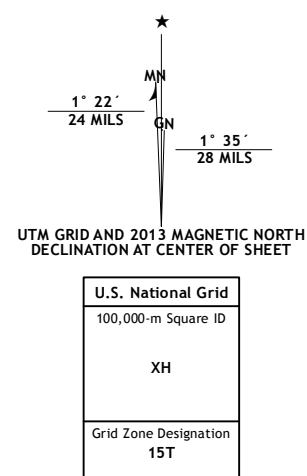


LONG HOLLOW QUADRANGLE  
WISCONSIN  
7.5-MINUTE SERIES



Produced by the United States Geological Survey  
North American Datum of 1983 (NAD83)  
World Geodetic System of 1984 (WGS84), Projection and  
1 000-meter grid: Universal Transverse Mercator, Zone 15T  
10 000-foot ticks: Wisconsin Coordinate System of 1983 (south zone)

Imagery.....NAIP, July 2010  
Roads.....©2006-2012 TomTom  
Names.....GNIS, 2013  
Hydrography.....National Hydrography Dataset, 2010  
Contours.....National Elevation Dataset, 2004  
Boundaries.....Census, IBWC, IBC, USGS, 1972 - 2012

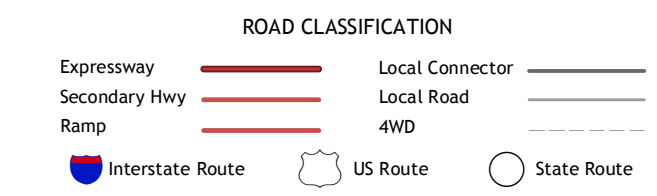


CONTOUR INTERVAL 20 FEET  
NORTH AMERICAN VERTICAL DATUM OF 1988  
This map was produced to conform with the  
National Geospatial Program US Topo Product Standard, 2011.  
A metadata file associated with this product is draft version 0.6.12



QUADRANGLE LOCATION

Steeben	Bosobel	Blue River
Wauwaka East	Long Hollow	Castle Rock
Mount Hope	Femimore	Slitzer



LONG HOLLOW, WI  
2013

ADJOINING 7.5 QUADRANGLES