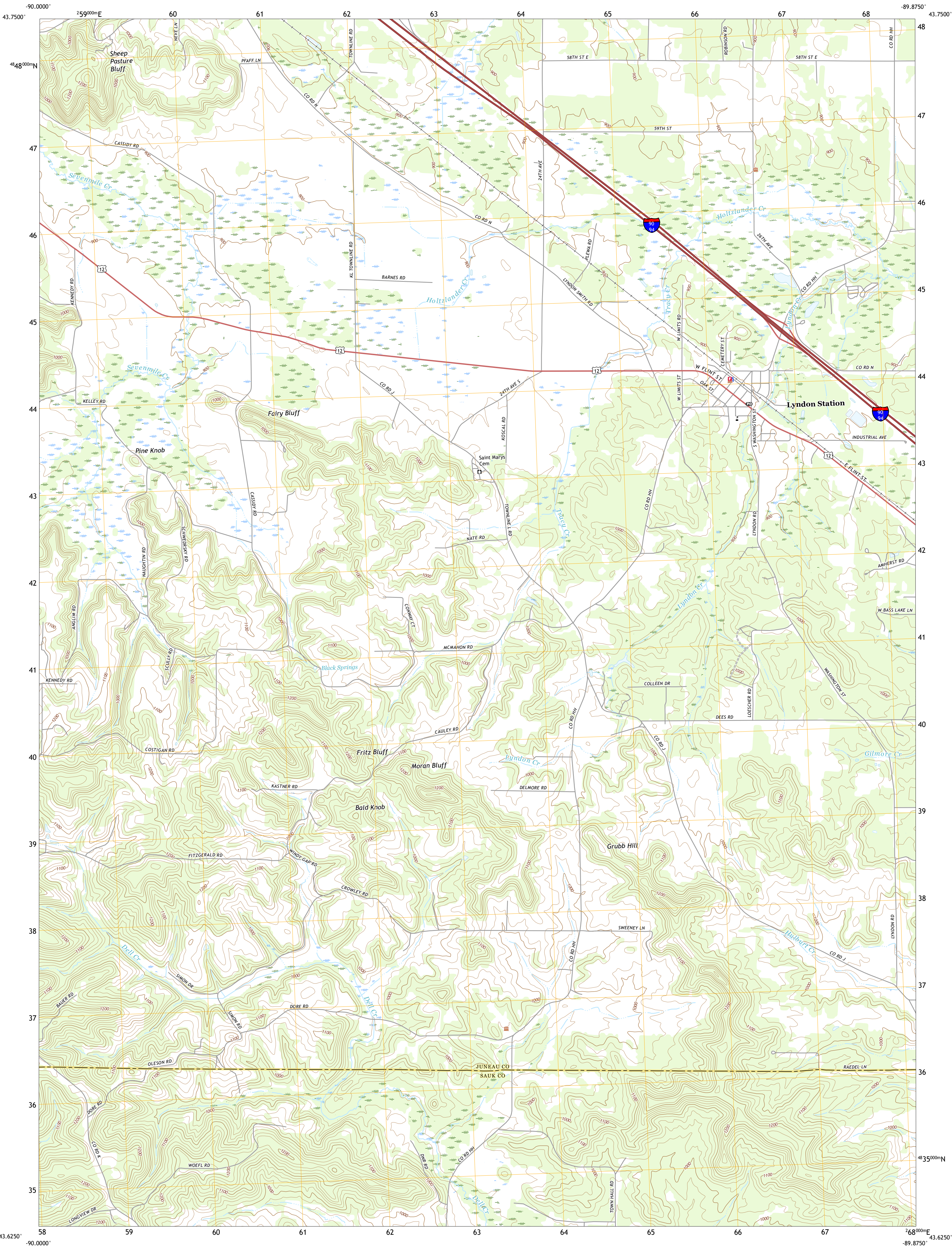




U.S. DEPARTMENT OF THE INTERIOR
U.S. GEOLOGICAL SURVEY



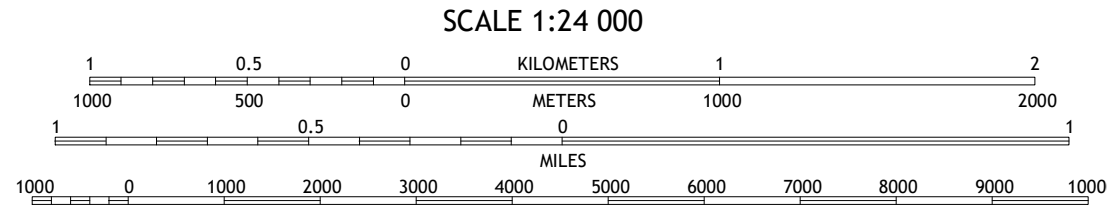
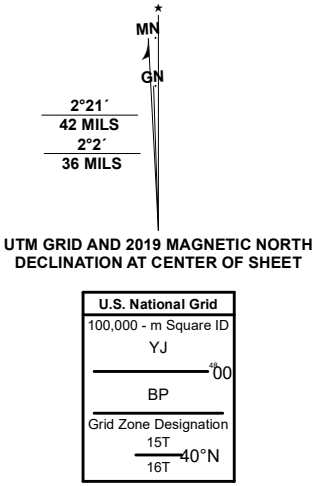
LYNDON STATION QUADRANGLE
WISCONSIN
7.5-MINUTE SERIES



Produced by the United States Geological Survey

North American Datum of 1983 (NAD83)
World Geodetic System of 1984 (WGS84) Projection and
1 000-meter grid/Universal Transverse Mercator, Zone 15T16T
This map is not a legal document. Boundaries may be
generalized for this map scale. Private lands within government
reservations may not be shown. Obtain permission before
entering private lands.

Imagery.....NAIP, October 2018 - October 2018
Roads.....U.S. Census Bureau, 2018
Names.....GNIS, 1980 - 2021
Hydrography.....National Hydrography Dataset, 2007 - 2018
Contours.....National Elevation Dataset, 1998
Boundaries.....Multiple sources: see metadata file, 2019 - 2021
Public Land Survey System.....BLM, 2020
Wetlands.....FWS National Wetlands Inventory 2000 - 2011



1	2	3
4	5	6
7	8	9

- 1 Mauston
- 2 Round Bluff
- 3 Easton
- 4 Potosi Hill
- 5 Wisconsin Dells North
- 6 Reedsburg West
- 7 Reedsburg East
- 8 Wisconsin Dells South

ROAD CLASSIFICATION	
Expressway	Local Connector
Secondary Hwy	Local Road
Ramp	4WD
Interstate Route	US Route
	State Route

LYNDON STATION, WI
2022

