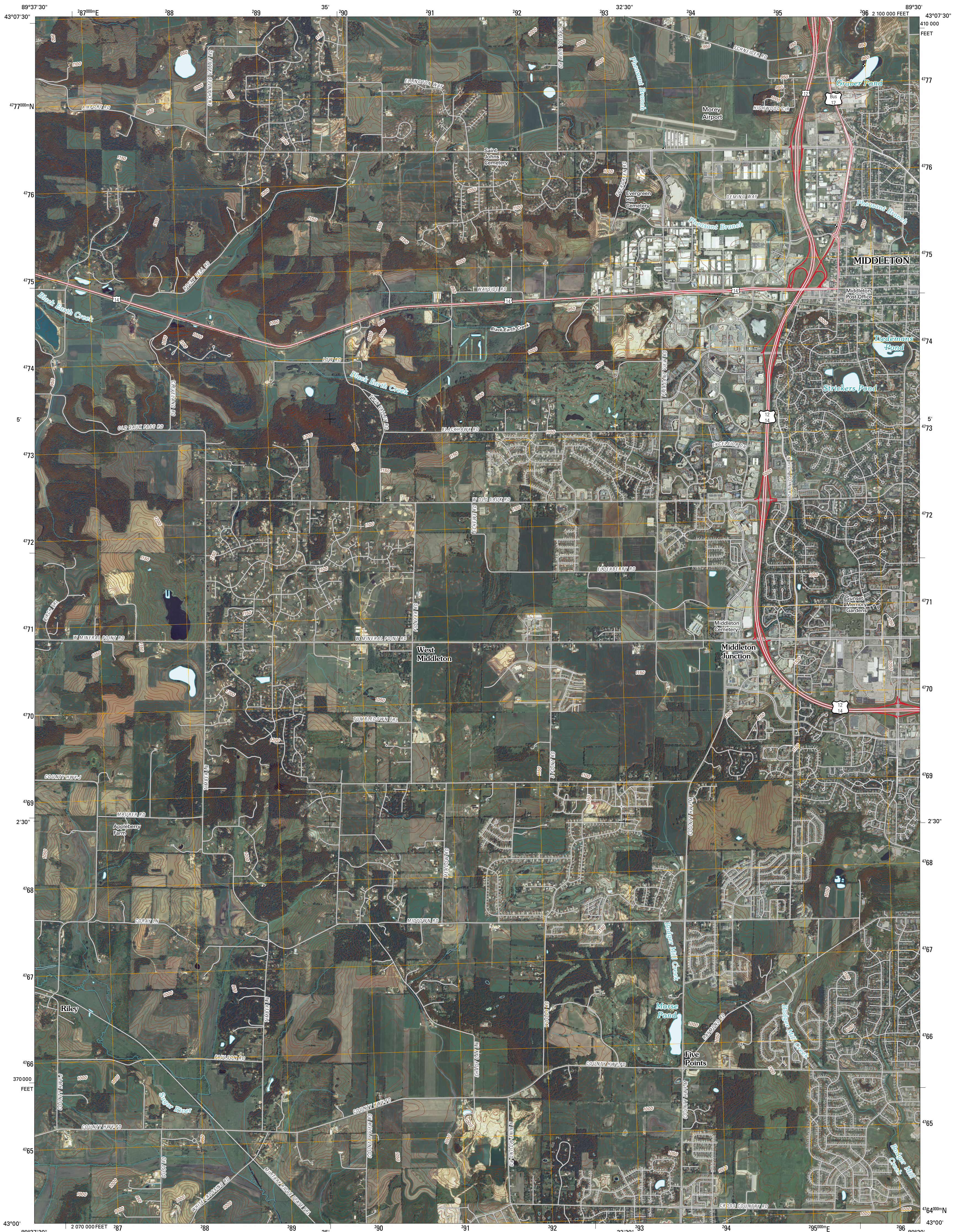




U.S. DEPARTMENT OF THE INTERIOR
U. S. GEOLOGICAL SURVEY

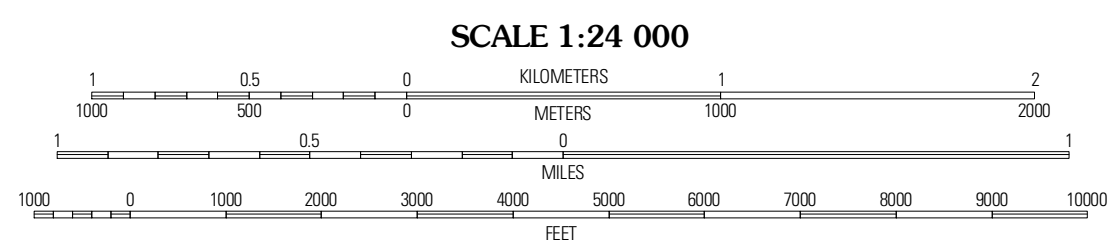
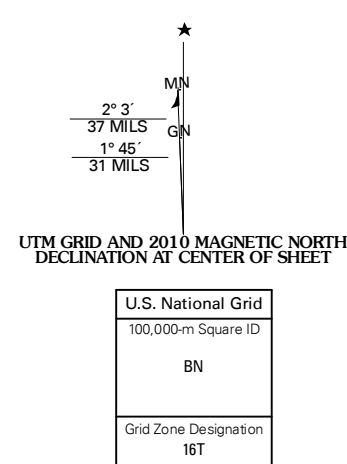


MIDDLETON QUADRANGLE
WISCONSIN
7.5-MINUTE SERIES



Produced by the United States Geological Survey
North American Datum of 1983 (NAD83)
World Geospatial System of 1984 (WGS84). Projection and
1 000-meter grid. Universal Transverse Mercator, Zone 16T
10 000-foot ticks. Wisconsin Coordinate System of 1983
(south zone)

Imagery.....NAIP, July 2008
Roads.....©2006-2010 Tele Atlas
Names.....National Hydrography Dataset, 2008
Hydrography.....National Hydrography Dataset, 2008
Contours.....National Elevation Dataset, 1998



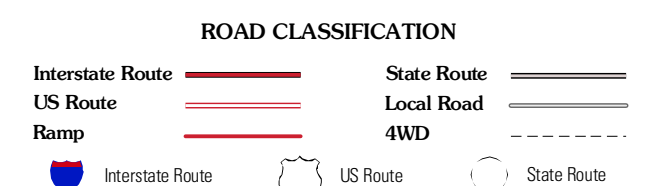
CONTOUR INTERVAL 10 FEET
NORTH AMERICAN VERTICAL DATUM OF 1988
This map was produced to conform with version 0.5.10 of the
draft USGS Standards for 7.5-Minute Quadrangle Maps.
A metadata file associated with this product is draft version 0.5.11



QUADRANGLE LOCATION

| | | |
|--------------|---------------------|--------------|
| Black Earth | Springfield Corners | Wausaukee |
| Cross Plains | Middleton | Million West |
| Mount Vernon | Verona | Oregon |

ADJOINING 7.5 QUADRANGLES



MIDDLETON, WI
2010