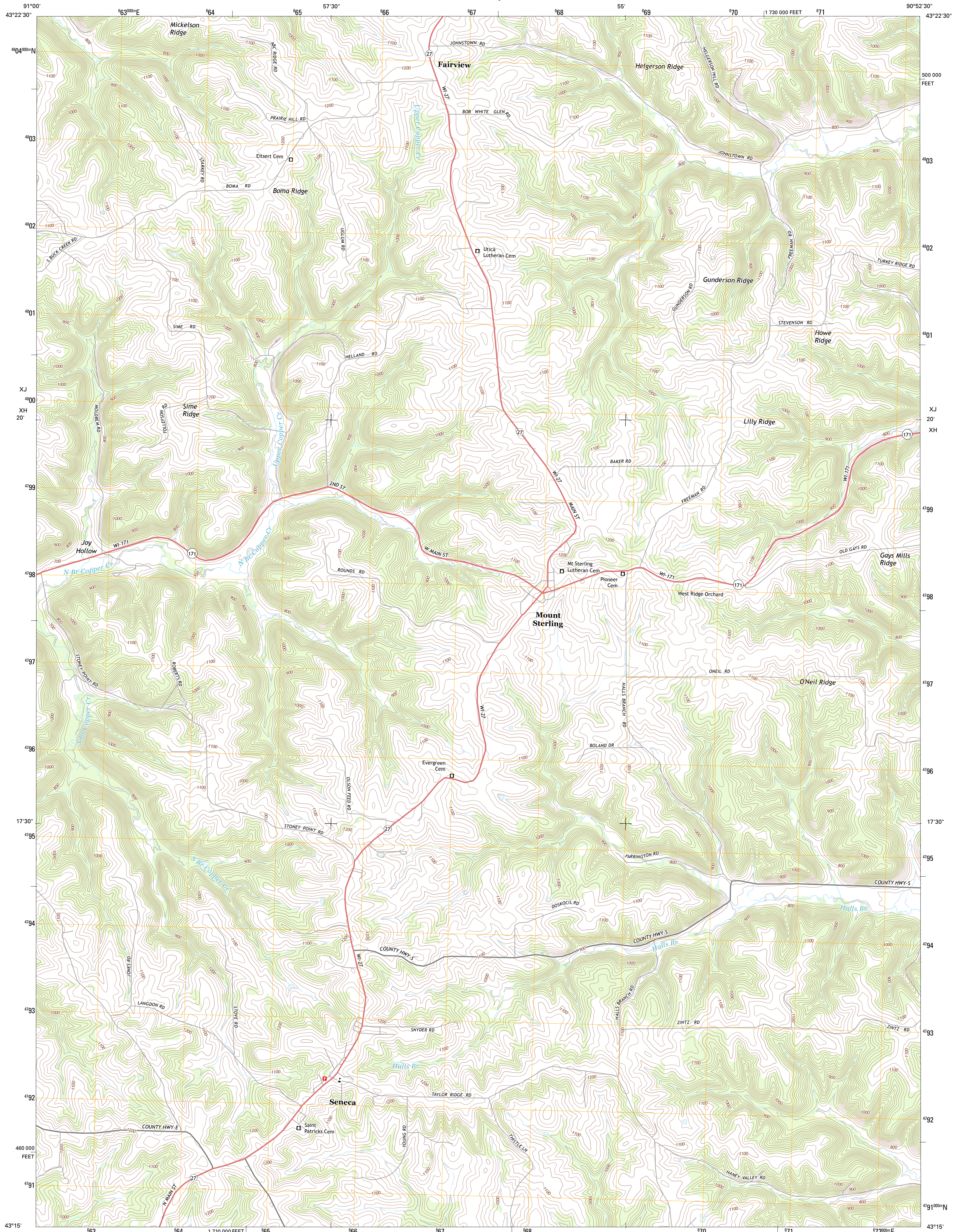




U.S. DEPARTMENT OF THE INTERIOR  
U. S. GEOLOGICAL SURVEY

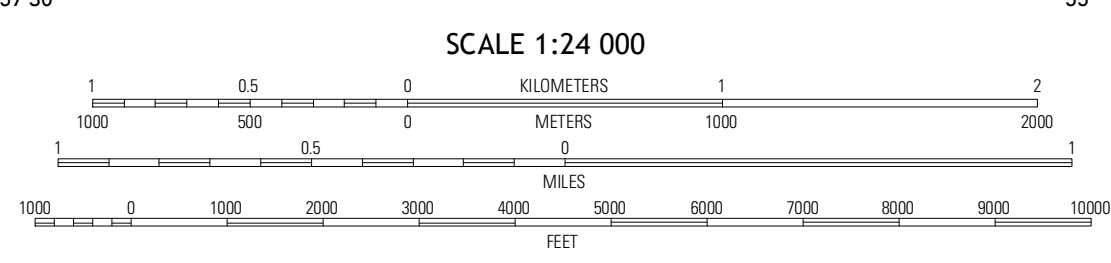
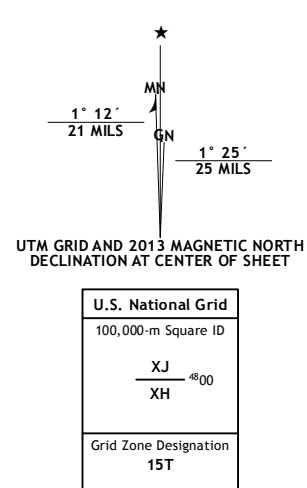


**MOUNT STERLING QUADRANGLE**  
WISCONSIN-CRAWFORD CO.  
7.5-MINUTE SERIES

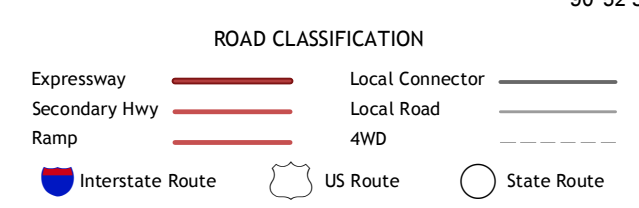


Produced by the United States Geological Survey  
North American Datum of 1983 (NAD83)  
World Geodetic System of 1984 (WGS84). Projection and  
1 000-meter grid: Universal Transverse Mercator, Zone 15T  
10 000-foot ticks: Wisconsin Coordinate System of 1983 (south zone)

Imagery.....N.A.I.P., July 2010  
Roads.....©2006-2012 TomTom  
Names.....©2013  
Hydrography.....National Hydrography Dataset, 2010  
Contours.....National Elevation Dataset, 2007  
Boundaries.....Census, IBWC, IBC, USGS, 1972 - 2012



CONTOUR INTERVAL 20 FEET  
NORTH AMERICAN VERTICAL DATUM OF 1988  
This map was produced to conform with the  
National Geospatial Program US Topo Product Standard, 2011.  
A metadata file associated with this product is draft version 0.6.12



QUADRANGLE LOCATION

Retreat	Rising Sun	Readstown
Ferryville	Mount Sterling	Gays Mills
Eastman	Crowley Ridge	Stouben

**MOUNT STERLING, WI**  
2013

ADJOINING 7.5 QUADRANGLES