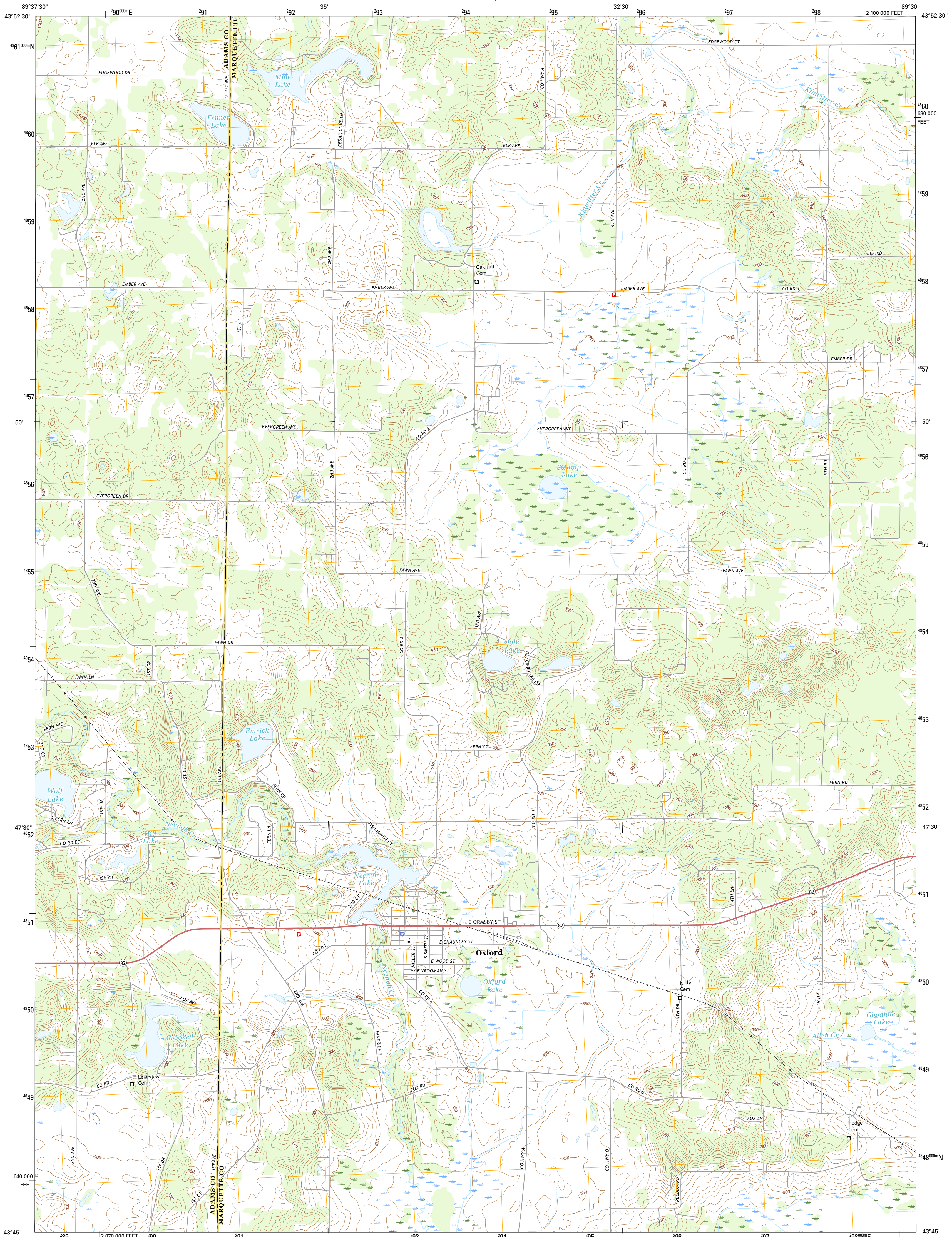




U.S. DEPARTMENT OF THE INTERIOR  
U.S. GEOLOGICAL SURVEY



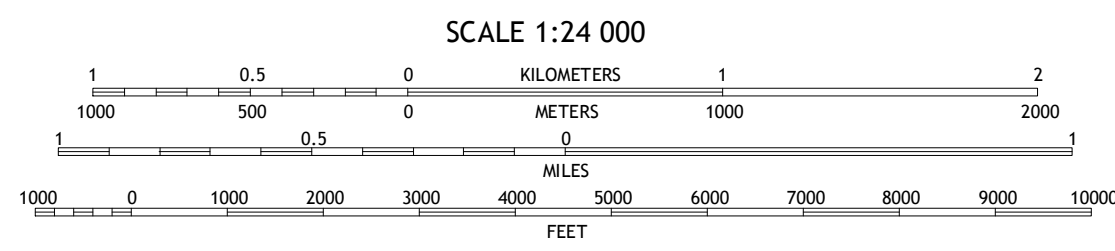
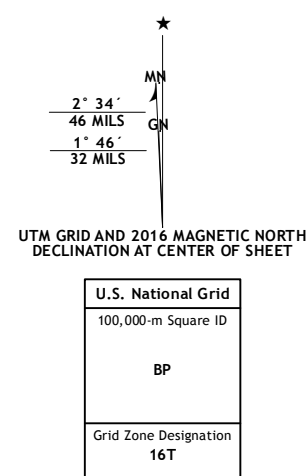
OXFORD QUADRANGLE  
WISCONSIN  
7.5-MINUTE SERIES



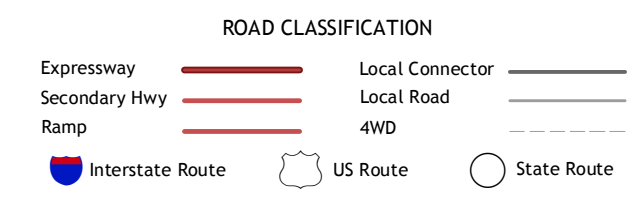
Produced by the United States Geological Survey  
North American Datum of 1983 (NAD83)  
World Geodetic System of 1984 (WGS84). Projection and  
1 000-meter grid: Universal Transverse Mercator, Zone 16T  
10 000-foot ticks: Wisconsin Coordinate System of 1983 (south zone)

This map is not a legal document. Boundaries may be  
generalized for this map scale. Private lands within government  
reservations may not be shown. Obtain permission before  
entering private lands.

Imagery.....N.A.I.P., August 2013  
Roads.....U.S. Census Bureau, 2015 - 2016  
Names.....GNIS, 2016  
Hydrography.....National Hydrography Dataset, 2013  
Contours.....National Elevation Dataset, 1998  
Boundaries.....Multiple sources; see metadata file 1972 - 2016  
Public Land Survey System.....BLA, 2014  
Wetlands.....FWS National Wetlands Inventory 1977 - 2014



QUADRANGLE LOCATION



1	2	3	1 Grand Marsh
4	5	6	2 Westfield West
7	8	7	3 Westfield East
		8	4 Brooks
			5 Packwaukee
			6 Big Spring
			7 Briggsville
			8 Endeavor

ADJOINING QUADRANGLES

OXFORD, WI  
2016

