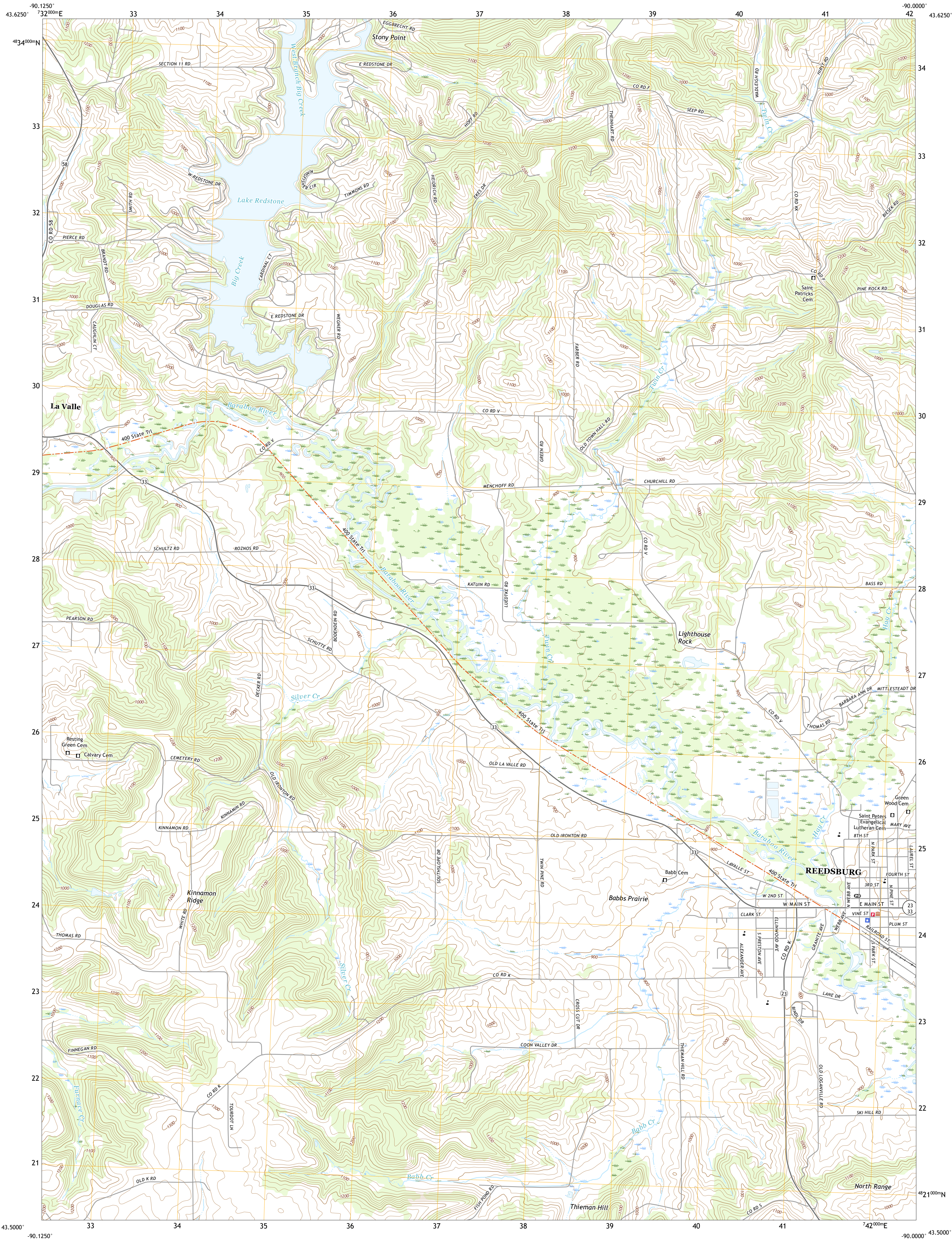




U.S. DEPARTMENT OF THE INTERIOR
U.S. GEOLOGICAL SURVEY



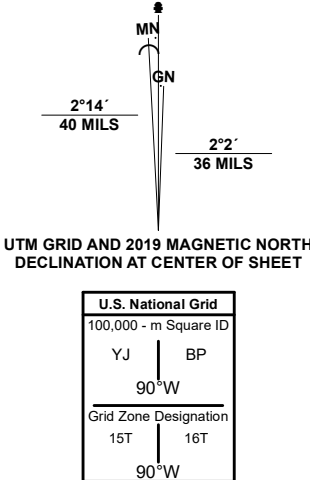
REEDSBURG WEST QUADRANGLE
WISCONSIN - SAUK COUNTY
7.5-MINUTE SERIES



Produced by the United States Geological Survey

North American Datum of 1983 (NAD83)
World Geodetic System of 1984 (WGS84). Projection and
1 000-meter grid/Universal Transverse Mercator, Zone 15T
This map is not a legal document. Boundaries may be
generalized for this map scale. Private lands within government
reservations may not be shown. Obtain permission before
entering private lands.

Imagery.....NAIP, October 2018 - October 2018
Roads.....U.S. Census Bureau, 2018
Names.....GNIS, 1980 - 2021
Hydrography.....National Hydrography Dataset, 2007 - 2018
Contours.....National Elevation Dataset, 1998
Boundaries.....Multiple sources: see metadata file, 2019 - 2021
Public Land Survey System.....BLM, 2017 - 2020
Wetlands.....FWS National Wetlands Inventory, 2000



CONTOUR INTERVAL 20 FEET
NORTH AMERICAN VERTICAL DATUM OF 1988
This map was produced to conform with the
National Geospatial Program US Topo Product Standard.



1	2	3
4	5	6
7	8	9

- 1 Wonegan
- 2 Potato Hill
- 3 Lyndon Station
- 4 La Valle
- 5 Reedsburg East
- 6 Lime Ridge
- 7 Loganville
- 8 Rock Springs

ROAD CLASSIFICATION	
Expressway	Local Connector
Secondary Hwy	Local Road
Ramp	4WD
Interstate Route	US Route
	State Route

REEDSBURG WEST, WI

2022

